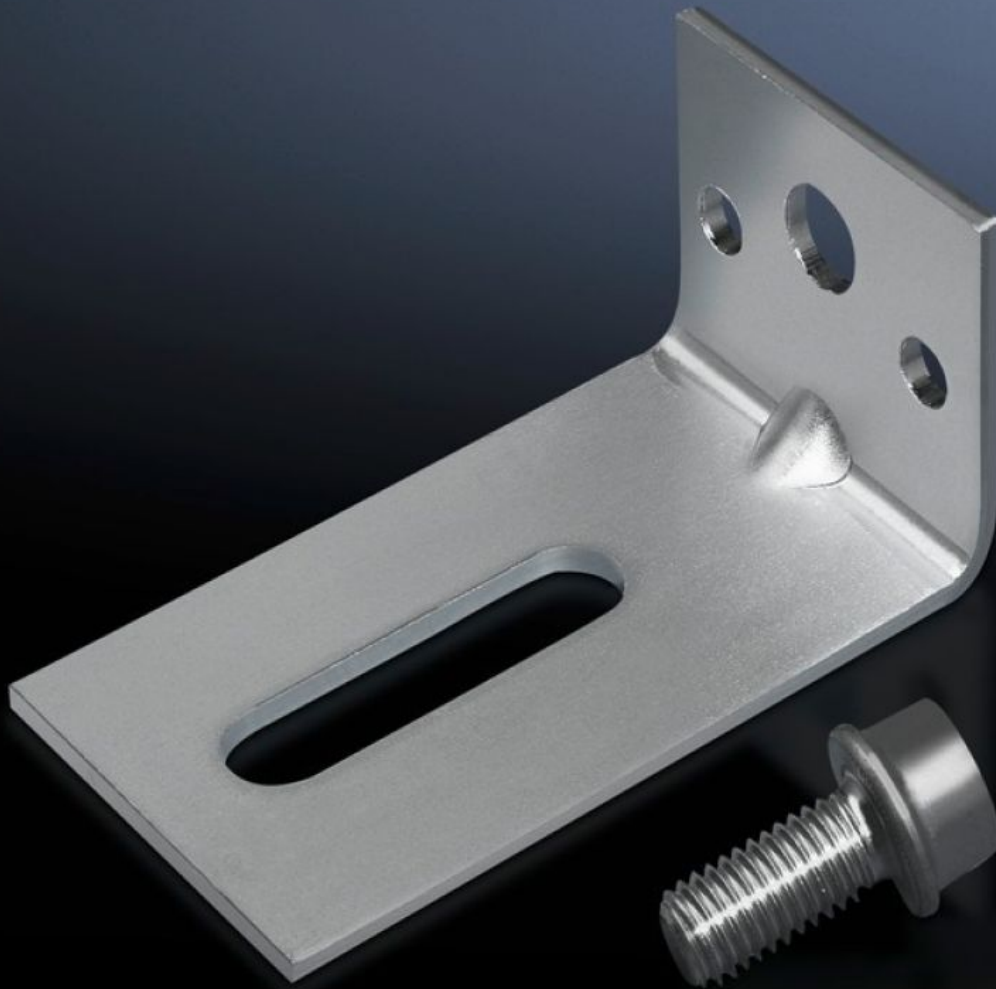


**Rittal – The System.**

Faster – better – everywhere.



# TS 4595.000

## Wall bracket

State: 11/05/2026 (Source: [rittal.com/sg-en](http://rittal.com/sg-en))

ENCLOSURES

POWER DISTRIBUTION

CLIMATE CONTROL

IT INFRASTRUCTURE

SOFTWARE & SERVICES

FRIEDHELM LOH GROUP



# TS 4595.000 - Wall bracket for VX, VX IT, VX SE, TS, TS IT

For attaching enclosures with a shallow depth and e.g. heavy components on the door or a built-in swing frame, to a wall at the top.

## Features

Model No.	TS 4595.000
Product description	For attaching enclosures with a shallow depth and e.g. heavy components on the door or a built-in swing frame, to a wall at the top.
Material	Sheet steel
Surface finish	Zinc-plated
Packs of	4 pc(s).
Net weight	1 kg
Gross weight	1.16 kg
PCF per pack (cradle-to-gate)	4.3 kg CO2 eq (Cat B)
Note on PCF category	Category B: PCF value (cradle-to-gate) based on the product weight, approximately calculated and self-declared
Customs tariff number	83024900
ETIM 9	EC002625
ETIM 8	EC002625
ECLASS 8.0	27189234
Product description	TS Wall bracket, sheet steel, galvanized