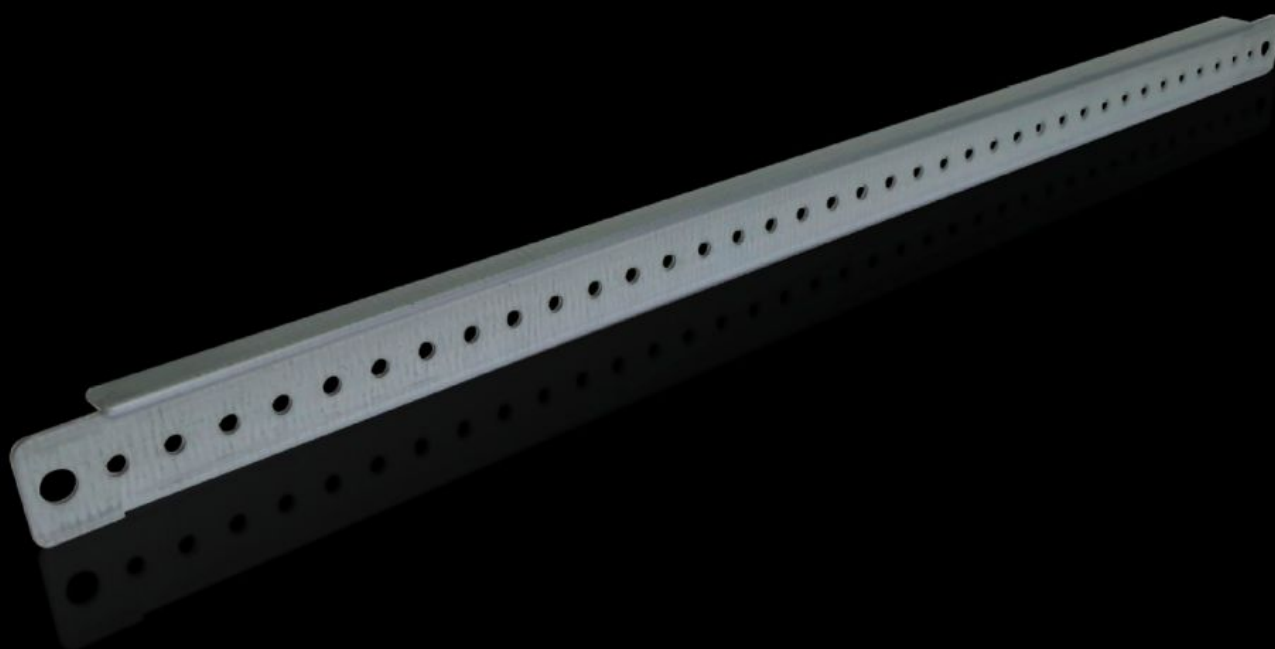


Rittal – The System.

Faster – better – everywhere.



TS 4596.000 Support strip

State: 24/08/2025 (Source: [rittal.com/sg-en](https://www.rittal.com/sg-en))

ENCLOSURES

POWER DISTRIBUTION

CLIMATE CONTROL

IT INFRASTRUCTURE

SOFTWARE & SERVICES

FRIEDHELM LOH GROUP



TS 4596.000 - Support strip for VX, TS, VX SE, TP, AX

For simple attachment of cable ducts, cable conduit holders, contact hazard protection cover plates, equipment installed on the door, cable clamping and attachment.



Features

Model No.	TS 4596.000
Product description	For simple attachment of cable ducts, cable conduit holders, contact hazard protection cover plates, equipment installed on the door, cable clamping and attachment.
Technical specifications	4.5 mm diameter hole on a 25 mm pitch pattern
Material	Sheet steel
Surface finish	Zinc-plated
Supply includes	Assembly parts
Length	490 mm
To fit door width	600 mm
VX installation options	In door width 600 mm
VX SE installation options	In door width 600 mm In enclosure width/depth 500 mm, on the inner mounting level
AX installation options	In door width 600 mm, with 3-point lock system, in the lockable door In enclosure width 500 mm and in enclosure height 600 mm, in conjunction with rail for interior installation AX
AX stainless steel installation options	In enclosure width 500 mm In enclosure height 600 mm
Installation options, AX plastic	In door width 600 mm

Features

Installation options for 3-part AX	In the enclosure depth 673 mm or in the width of the wall section
PC installation options	In door width 600 mm
WI installation options	In door width 600 mm
TS installation options	In door width 600 mm In enclosure width/depth 500 mm, on the inner mounting level
Installation options for VX base/ plinth, stainless steel	In base/plinth depth 600 mm, in conjunction with M6 multi-tooth screws and M6 nuts
To fit	Enclosure type: VX TS VX SE PC IW AX AX plastic AX wall-mounted enclosure, 3-part To fit width/depth: 500 mm
To fit	VX base/plinth system, stainless steel
Packs of	20 pc(s).
Net weight	4.06
Gross weight	5.1
PCF per pack (cradle-to-gate)	19.2 kg CO2 eq (Cat B)
Note on PCF category	Category B: PCF value (cradle-to-gate) based on the product weight, approximately calculated and self-declared
Customs tariff number	73269098
EAN	4028177103764
ETIM 9	EC002620
ETIM 8	EC002620
ECLASS 8.0	27189261