

# Rittal – The System.

Faster – better – everywhere.



## TS 5050.119 Rear panel

State: 04/11/2025 (Source: [rittal.com/sg-en](http://rittal.com/sg-en))

ENCLOSURES

POWER DISTRIBUTION

CLIMATE CONTROL

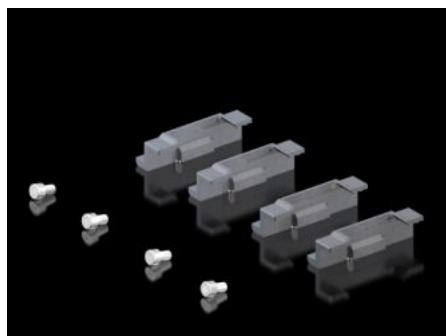
IT INFRASTRUCTURE

SOFTWARE & SERVICES

FRIEDHELM LOH GROUP



# TS 5050.119 - Rear panel for VX SE, TS



## Features

Model No.	TS 5050.119
Surface finish	Powder-coated
Colour	RAL 7035
Supply includes	Rear panel Assembly parts (set)
Dimensions	Width: 800 mm Height: 1,400 mm
Packs of	1 pc(s).
Net weight	13.44
Gross weight	23
EAN	4028177650091
ETIM 9	EC002524
ETIM 8	EC002524
ECLASS 8.0	27182101