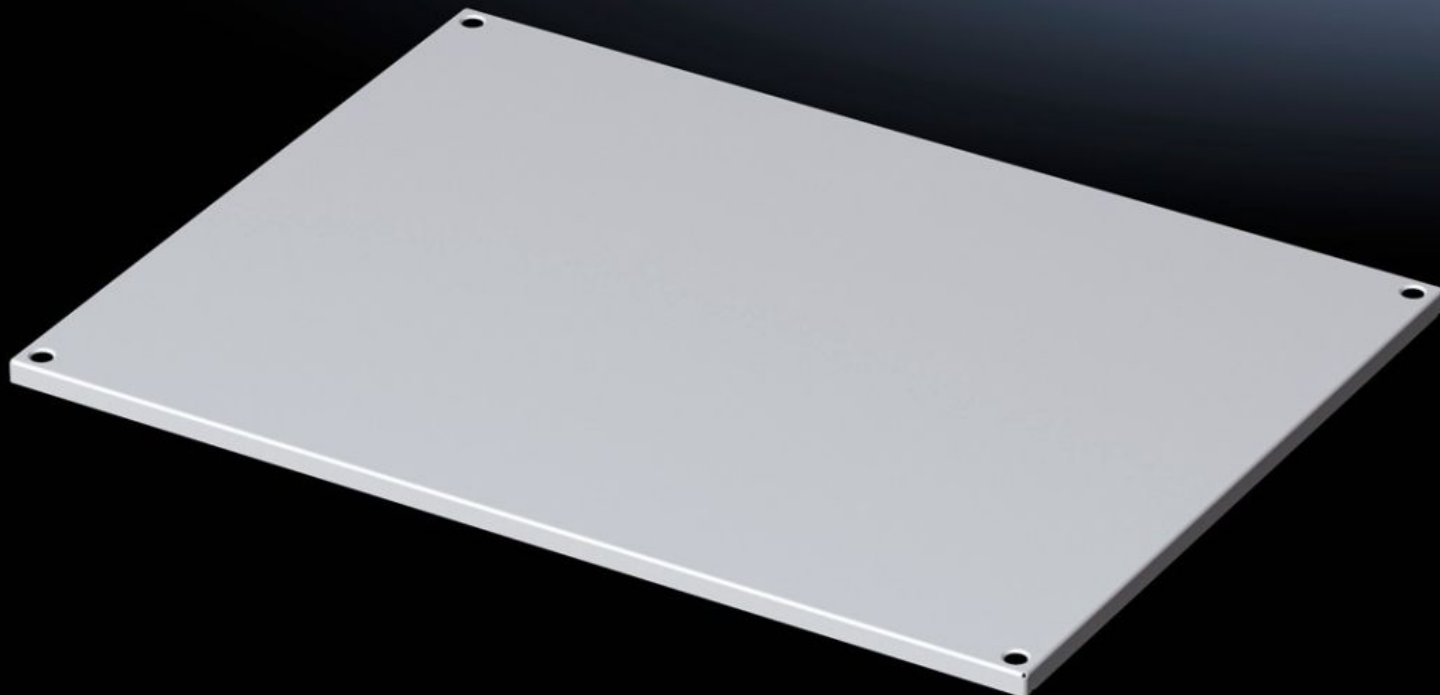


Rittal – The System.

Faster – better – everywhere.



VX 5051.051

Roof plate

State: 02/08/2025 (Source: [rittal.com/sg-en](https://www.rittal.com/sg-en))

ENCLOSURES

POWER DISTRIBUTION

CLIMATE CONTROL

IT INFRASTRUCTURE

SOFTWARE & SERVICES

FRIEDHELM LOH GROUP



VX 5051.051 - Roof plate for VX

Features

Model No.	VX 5051.051
Material	Sheet steel
Surface finish	Dipcoat-primed, powder-coated on the outside, textured paint
Colour	RAL 7035
To fit	Enclosure type: VX Width: 1,200 mm Depth: 600 mm
Packs of	1 pc(s).
Net weight	8.2
Gross weight	10.2
EAN	4028177928091
ETIM 9	EC000744
ETIM 8	EC000261
ECLASS 8.0	27182405