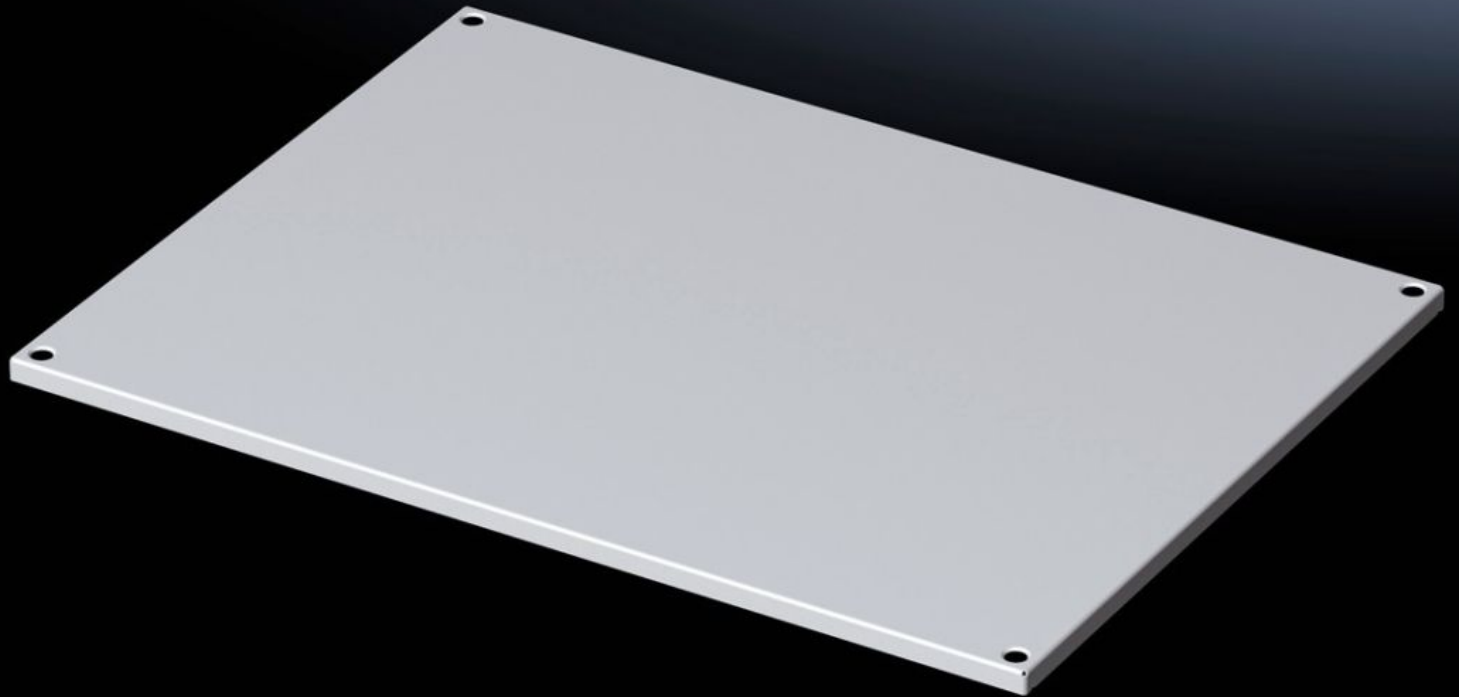


# Rittal – The System.

Faster – better – everywhere.



## VX 5051.052

## Roof plate

State: 23/05/2026 (Source: [rittal.com/sg-en](http://rittal.com/sg-en))

ENCLOSURES

POWER DISTRIBUTION

CLIMATE CONTROL

IT INFRASTRUCTURE

SOFTWARE & SERVICES

FRIEDHELM LOH GROUP



# VX 5051.052 - Roof plate for VX

## Features

Model No.	VX 5051.052
Material	Sheet steel
Surface finish	Dipcoat-primed, powder-coated on the outside, textured paint
Colour	RAL 7035
To fit	Enclosure type: VX Width: 1,200 mm Depth: 800 mm
Packs of	1 pc(s).
Net weight	10.8 kg
Gross weight	17.1 kg
Customs tariff number	73269098
ETIM 9	EC000744
ETIM 8	EC000261
ECLASS 8.0	27182405