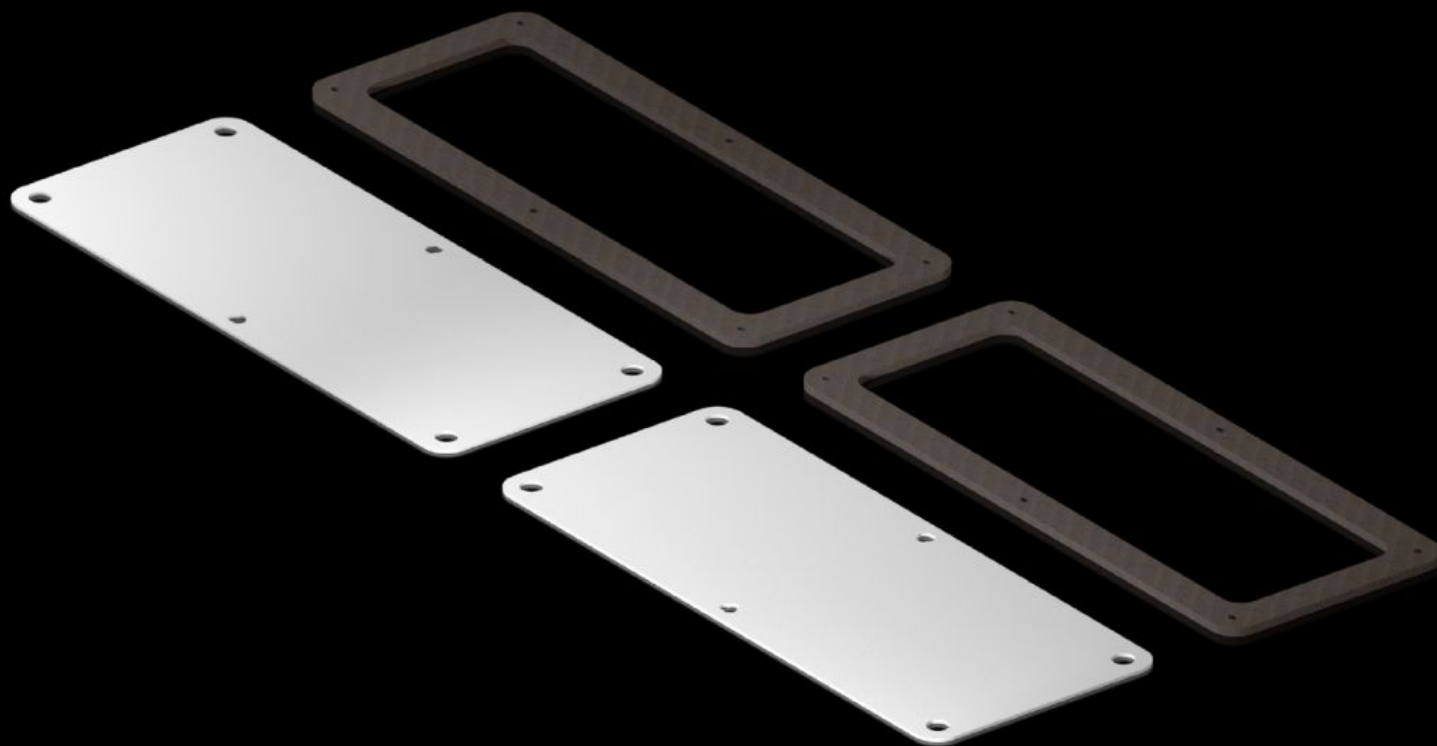


Rittal – The System.

Faster – better – everywhere.



KX 5051.405 Gland plates

State: 21/05/2026 (Source: rittal.com/sg-en)

ENCLOSURES

POWER DISTRIBUTION

CLIMATE CONTROL

IT INFRASTRUCTURE

SOFTWARE & SERVICES

FRIEDHELM LOH GROUP



KX 5051.405 - Gland plates for KX

Features

Model No.	KX 5051.405
Material	Sheet steel
Supply includes	Gland plate Sealing frame
Dimensions	Width: 220 mm Depth: 90 mm
Packs of	2 pc(s).
Net weight	0.44 kg
Gross weight	0.444 kg
Customs tariff number	73079100
ETIM 9	EC000261
ECLASS 8.0	27180101

Approvals

Approvals	UL + C-UL - FTTA
-----------	------------------