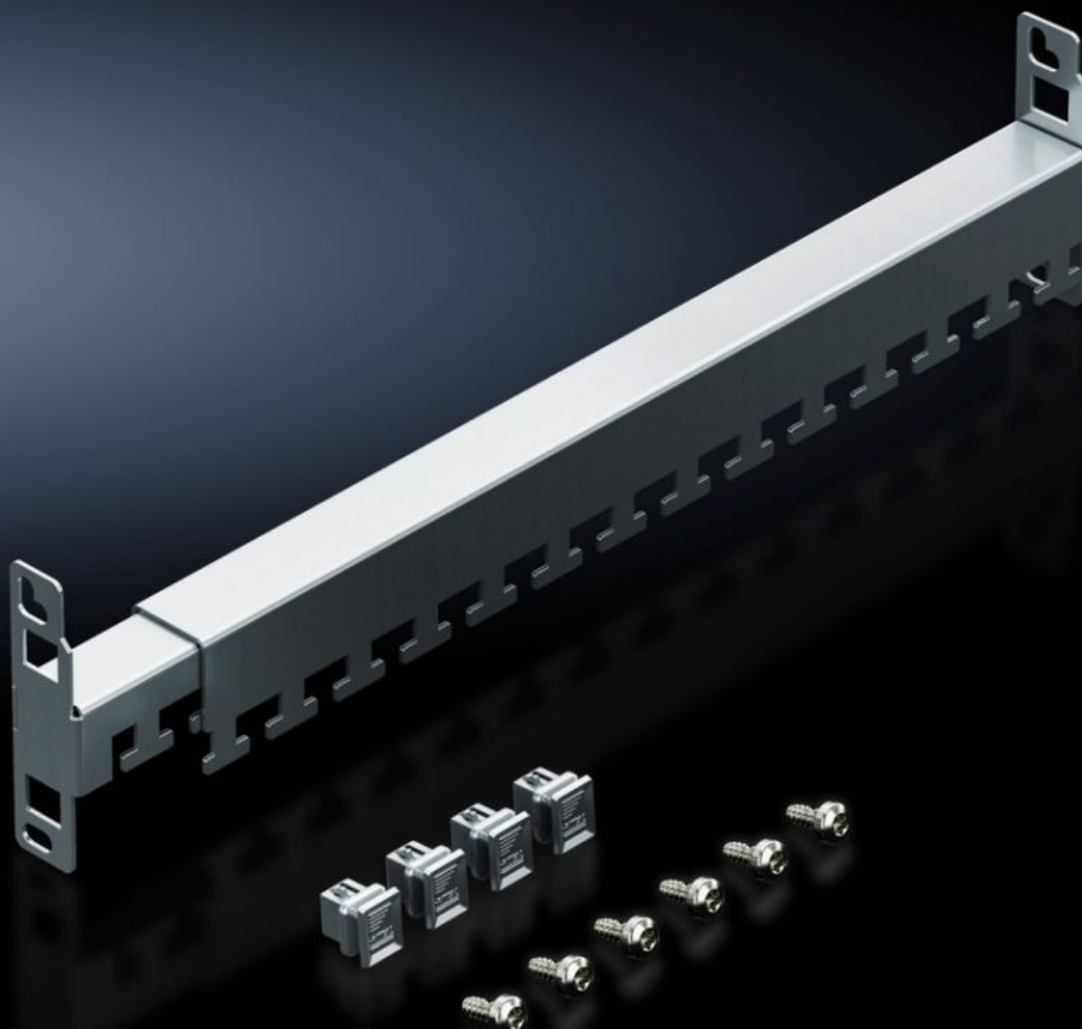


# Rittal – The System.

Faster – better – everywhere.



## DK 5302.044

## Cable clamp rail, depth-variable

State: 18/07/2025 (Source: [rittal.com/sg-en](https://www.rittal.com/sg-en))

ENCLOSURES

POWER DISTRIBUTION

CLIMATE CONTROL

IT INFRASTRUCTURE

SOFTWARE & SERVICES

FRIEDHELM LOH GROUP



# DK 5302.044 - Cable clamp rail, depth-variable for VX IT, TE

For VX IT and TE. Allows their length to be flexibly adapted to the existing mounting distance between the two 482.6 mm (19") mounting levels.

## Features

Model No.	DK 5302.044
Benefits	The depth variability of the rails allows their length to be flexibly adapted to the given mounting distance between the two 482.6 mm (19") mounting levels.
Applications	<p>For cable routing on the enclosure frame and for strain relief of the routed cables. The cables can be attached to the cable clamp rails with cable ties or velcro fasteners.</p> <p>The cable clamp rails can be located horizontally at the rear directly onto a 482.6 mm (19") mounting level or in the enclosure space between two mounting levels. An additional screw fastening secures the unit.</p>
Material	Sheet steel
Surface finish	Zinc-plated
Supply includes	Assembly parts
Distance between levels	350 - 550 mm
Note	<p>Mounting dimensions + 170 mm = distance between 482.6 mm (19") levels for VX IT, standard</p> <p>Mounting dimensions + 175 mm = distance between 482.6 mm (19") levels for VX IT, dynamic</p>
Packs of	1 pc(s).
Net weight	0.67
Gross weight	0.687
PCF per pack (cradle-to-gate)	2.6 kg CO2 eq (Cat B)
Note on PCF category	Category B: PCF value (cradle-to-gate) based on the product weight, approximately calculated and self-declared

# Features

Customs tariff number	73269098
EAN	4028177952690
ETIM 9	EC000322
ECLASS 8.0	27400604