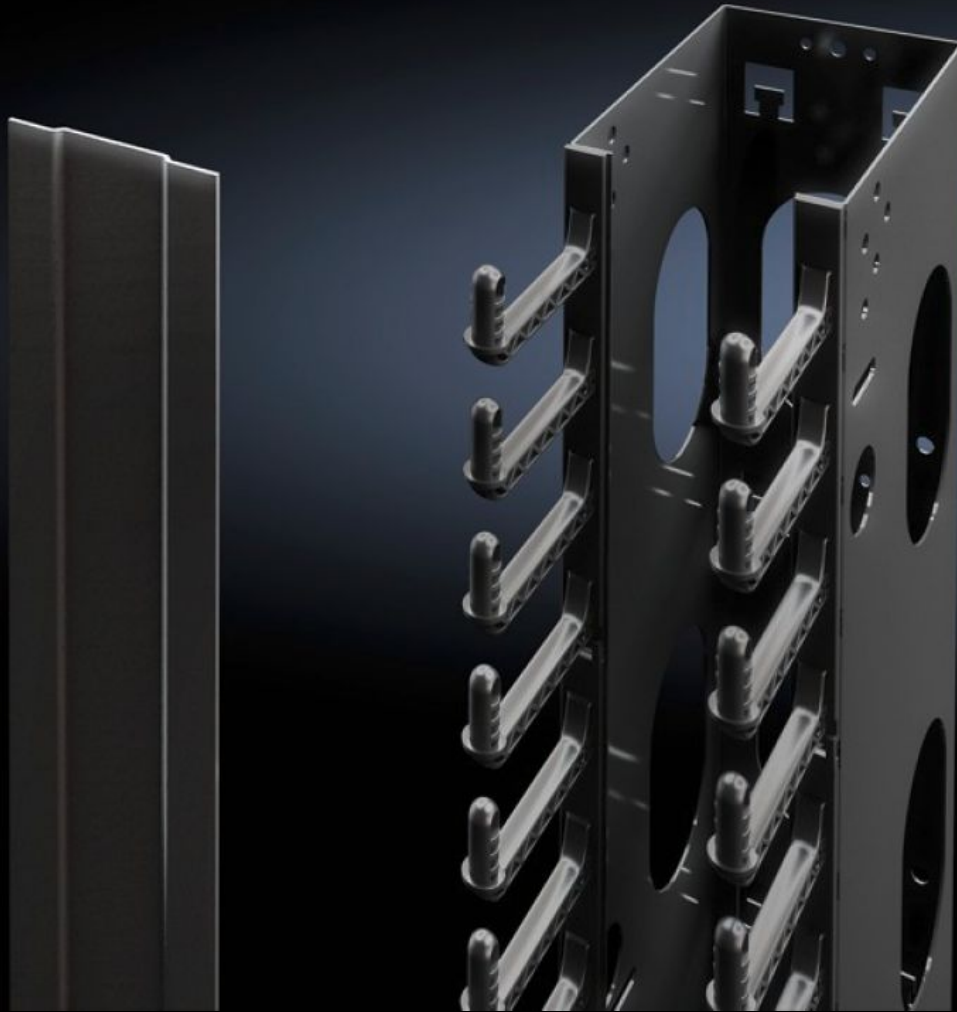
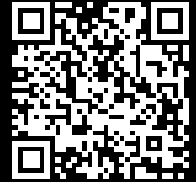


Rittal – The System.

Faster – better – everywhere.



DK 5502.105 Cable duct

State: 23/05/2026 (Source: rittal.com/sg-en)

ENCLOSURES

POWER DISTRIBUTION

CLIMATE CONTROL

IT INFRASTRUCTURE

SOFTWARE & SERVICES

FRIEDHELM LOH GROUP



DK 5502.105 - Cable duct for TS IT, TE

Cable duct with removable duct cover hinged on both sides.



Features

Model No.	DK 5502.105
Product description	Cable duct has a removable duct cover hinged on both sides and is alternatively suitable for screw-fastening.
Benefits	Simple assembly with tool-free quick-release fastening High packing density due to U-based cable routing Suitable for back-to-back baying
Material	Sheet steel Plastic to UL 94-V0
Colour	RAL 9005
Supply includes	Cover and assembly parts incl. 4 cable retainers for spare cables
Units	36 U
To fit	Enclosure type: TS IT TE Width: 800 mm Height: 2,000 mm
Suitable for width	800 mm
Packs of	1 pc(s).
ECLASS 8.0	27400604
Product description	DK Cable duct, WxH: 800x2000 mm, 36 U, For TS IT, RAL 9005