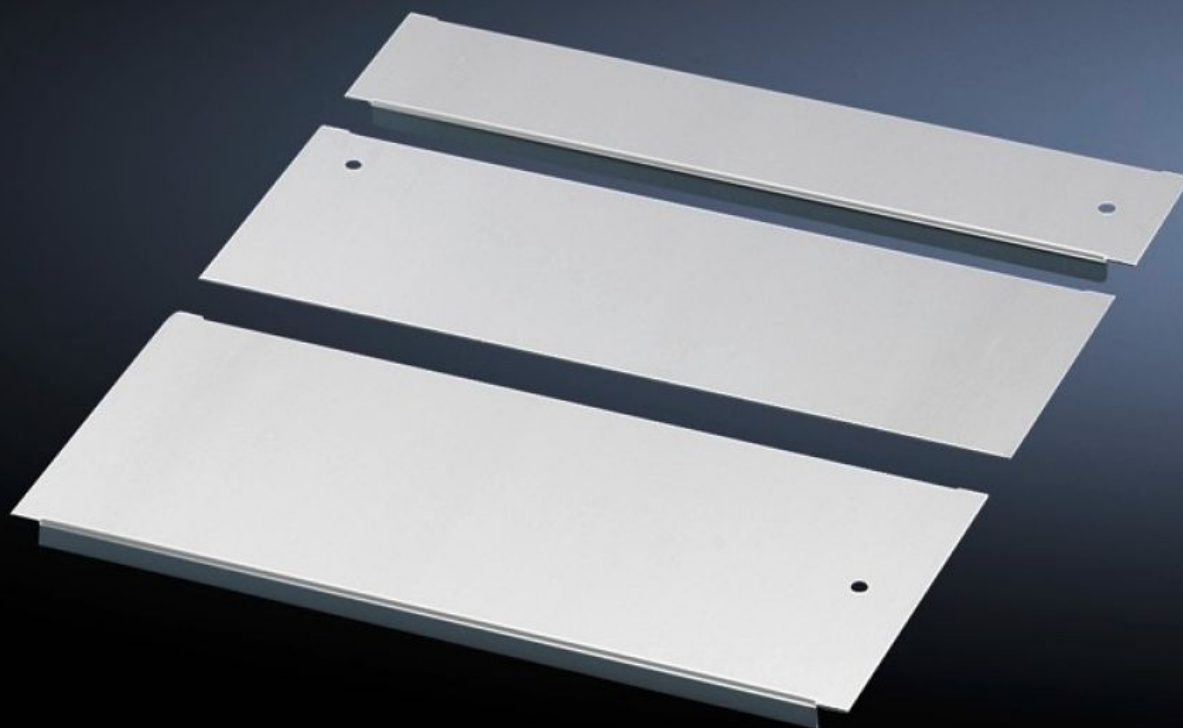


Rittal – The System.

Faster – better – everywhere.



DK 5502.540 Gland plate

State: 11/02/2026 (Source: [rittal.com/sg-en](https://www.rittal.com/sg-en))

ENCLOSURES

POWER DISTRIBUTION

CLIMATE CONTROL

IT INFRASTRUCTURE

SOFTWARE & SERVICES

FRIEDHELM LOH GROUP



DK 5502.540 - Gland plate for TS IT, TX CableNet

Potential equalisation is provided via assembly components and earthing points. The gland plate set is used to conceal the entire base opening.

Features

Model No.	DK 5502.540
Design	Gland plate, solid, with sliding panel, multi-piece
Product description	Potential equalisation is provided via assembly components and earthing points. Gland plate set: To conceal the entire base opening. Gland plate modules: Select suitable modules depending on the application.
Material	Sheet steel
Surface finish	Zinc-plated
Supply includes	Assembly parts
To fit	Enclosure type: TS IT Width: 600 mm Depth: 1,000 mm
Packs of	1 pc(s).
Net weight	5.639
Gross weight	5.72
Customs tariff number	94039910
EAN	4028177682481
E-Number Sweden	E7239573
ETIM 9	EC002620
ECLASS 8.0	27189261