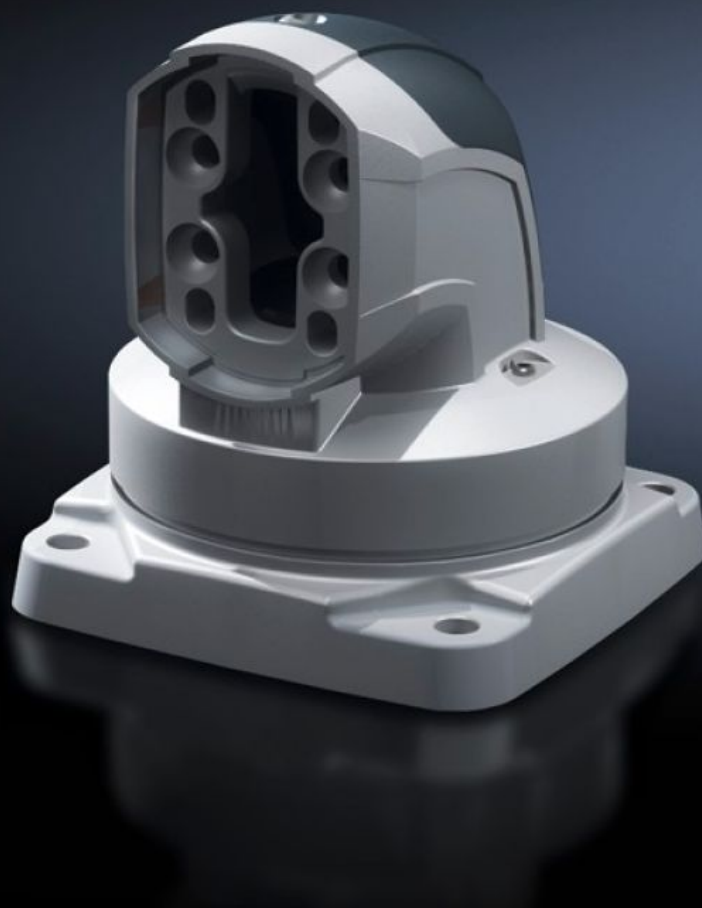
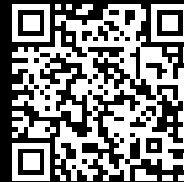


# Rittal – The System.

Faster – better – everywhere.



## CP 6206.700

## Top-mounted joint CP 60

State: 13/08/2025 (Source: [rittal.com/sg-en](https://www.rittal.com/sg-en))

ENCLOSURES

POWER DISTRIBUTION

CLIMATE CONTROL

IT INFRASTRUCTURE

SOFTWARE & SERVICES

FRIEDHELM LOH GROUP



# CP 6206.700 - Top-mounted joint CP 60 Horizontal outlet

For swivel mounting of the support arm system on horizontal surfaces – also suitable for suspending from the ceiling. Removable cover for simple cable entry.

## Features

Model No.	CP 6206.700
Product description	For swivel mounting of the support arm system on horizontal surfaces – also suitable for suspending from the ceiling. Removable cover for simple cable entry.
Material	Cover: Plastic Top-mounted joint: Cast aluminium
Colour	Cover: RAL 7024 Top-mounted joint: RAL 7035
Supply includes	Seals Screws for restricting rotation range Adjusting screws Self-tapping screws for support section attachment
Rotating/tilting	Yes
Rotation angle/swivel area	approx. 330°. The range of rotation can be limited by inserting the screws/limit plate provided.
Dimensions	Width: 146 mm Height: 158 mm
Packs of	1 pc(s).
Net weight	2.86
Gross weight	3.06
Customs tariff number	76169990
EAN	4028177684294
ETIM 9	EC000882
ECLASS 8.0	27400556

# Approvals

---

Explanations	Manufacturer's declaration
--------------	----------------------------