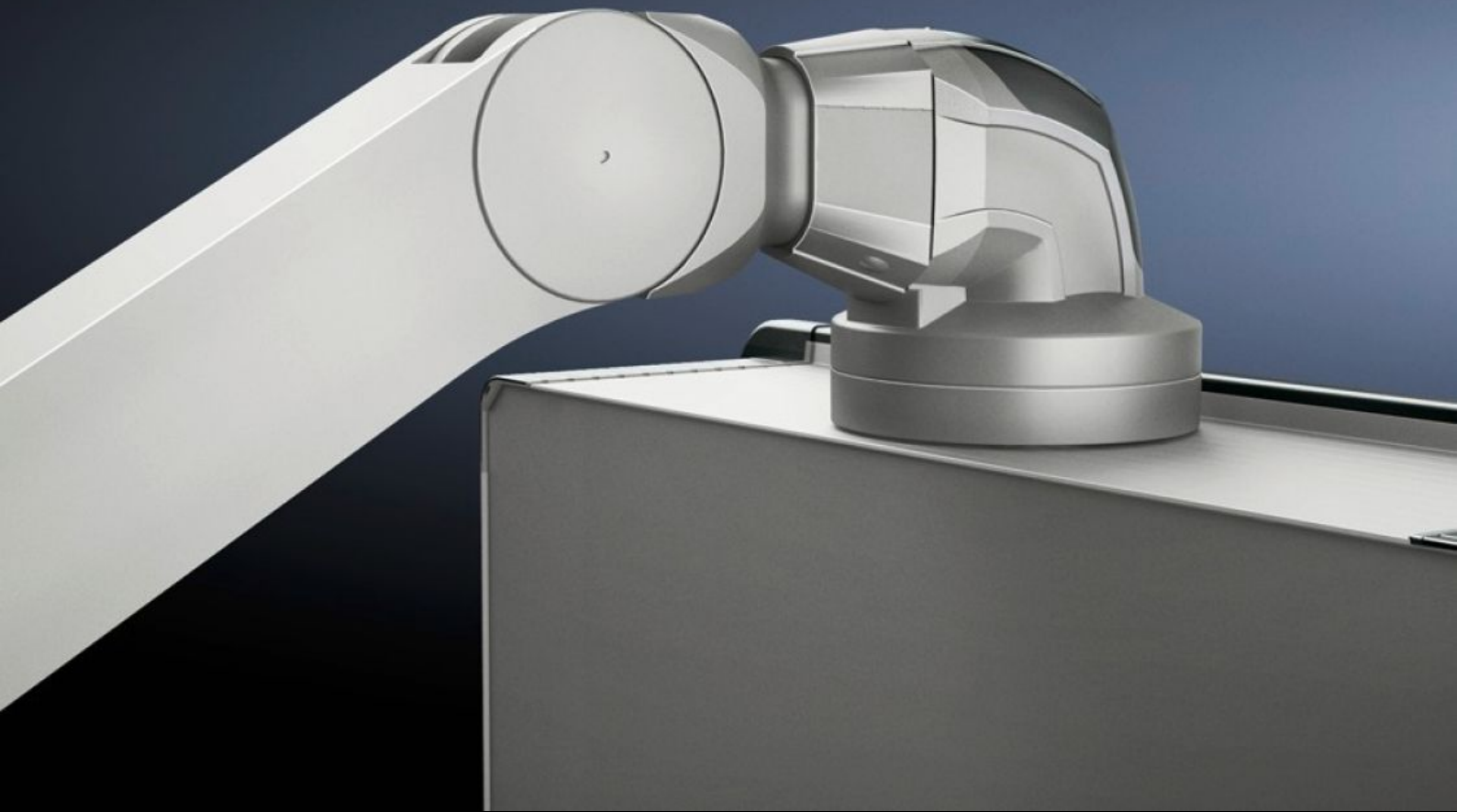


**Rittal – The System.**

Faster – better – everywhere.



**CP 6510.210**

**Support arm, height-adjustable**

State: 02/04/2026 (Source: [rittal.com/sg-en](http://rittal.com/sg-en))

ENCLOSURES

POWER DISTRIBUTION

CLIMATE CONTROL

IT INFRASTRUCTURE

SOFTWARE & SERVICES

FRIEDHELM LOH GROUP



# CP 6510.210 - Support arm, height-adjustable for support arm systems CP 120

Offers enhanced ergonomics

## Features

Model No.	CP 6510.210
Product description	Offers enhanced ergonomics thanks to adjustment range for tall and short operators, for seated and standing work adjustable to up to 800 mm as required via an adjustment screw at the front of the support arm. Clip-off plastic panels for access to integral cable routing.
Benefits	Precise coordination of the compression spring to the enclosure weight via an adjusting screw at the rear of the support arm Complete functional reliability – if the compression spring breaks, the arm will remain in position Tilting angle of the mounted enclosure is identical in every height position
Colour	RAL 9006
Supply includes	Assembly parts
Length	962 mm
Installation options	Maximum cross-section for cable entry 8 x 15 mm
Note on Model No.	Weight range applies to configured enclosure and vertical support section.
Dimensions	Length: 962 mm
Load capacity	10 kg...20 kg
Packs of	1 pc(s).
Net weight	7.574 kg
Gross weight	7.973 kg
Customs tariff number	73269098
ECLASS 8.0	27189263

# Features

---

Product description

CP Support arm, height-adjustable, for support arm system CP 120,  
L: 962 mm, for weight range 10-20 kg

# Approvals

---

Explanations

Manufacturer's declaration

# Tender text

Support arm, height adjustable for support arm systems CP 120  
Support arm, height adjustable offers enhanced ergonomics thanks to Adjustment range, for tall and short operators, for seated and standing work. Adjustable to a maximum of 800 mm as required via an adjusting screw at the front of the support arm. Complete functional reliability - if the compression spring breaks, the arm will remain in position. Clip-off plastic panels for access to integral cable routing. Tilting angle of the mounted enclosure is identical in every height position.

Weight/pack: 8 kg

Weight range: 10 - 20 kg

Weight range applies to configured enclosure and vertical support section.

Colour: RAL 9006

Length: 962 mm

Model No: 6510210

producer: Rittal GmbH & Co. KG