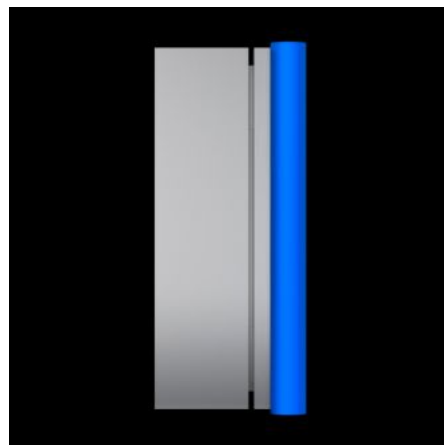




CP 6539.010 - Command panel housing with door

Stainless steel

Command panel housing with door made from stainless steel 1.4301 (AISI 304), with handle strips made from plastic approved for use with foodstuffs. May be combined with support arm system CP40, stainless steel.



Features

Model No.	CP 6539.010
Design	With support arm connection CP 40, stainless steel
Material	Enclosure and door: Stainless steel 1.4301 (AISI 304) Handle strips: Plastic approved for use with foodstuffs, dyed blue
Surface finish	Brushed, grain 400
General colour	Stainless steel
Colour	Handle strips: similar to RAL 5002
Supply includes	Enclosure of all-round solid construction Cut-out and reinforcement for support arm system CP 40 stainless steel Fastener with guide plate Door with sealing frame and side handle strips Lock: 3 mm double-bit
Dimensions	Width: 600 mm Height: 400 mm Depth: 150 mm

Features

IP protection category to IEC 60529	IP 66
Protection category NEMA	NEMA 12
Note	The support arm connection and door hinge may be swapped over by rotating the enclosure 3 mm double-bit lock insert may be exchanged for 41 mm lock inserts, plastic handles and T handles, type C
Basic material	Stainless steel 1.4301 (AISI 304)
Packs of	1 pc(s).
Net weight	12 kg
Gross weight	12.15 kg
Customs tariff number	94032080
ETIM 9	EC002504
ECLASS 8.0	27180505
Product description	CP Command panel housing with door, WHD: 600x400x150 mm, Stainless steel 1.4301

Approvals

Approvals	UL
Explanations	Declaration of conformity Declaration of conformity UK PCF-declaration