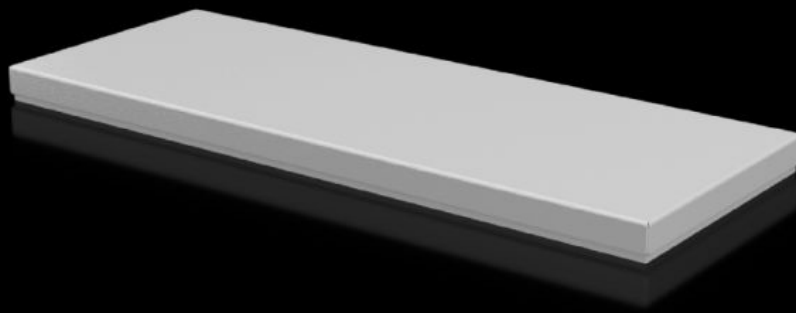


Rittal – The System.

Faster – better – everywhere.



CX 6730.900 Cover plate

State: 21/06/2026 (Source: rittal.com/sg-en)

ENCLOSURES

POWER DISTRIBUTION

CLIMATE CONTROL

IT INFRASTRUCTURE

SOFTWARE & SERVICES

FRIEDHELM LOH GROUP



CX 6730.900 - Cover plate For CX console system

To seal the roof opening of CX pedestals and desk units.

Features

| | |
|-------------------------------------|---|
| Model No. | CX 6730.900 |
| Material | Sheet steel |
| Surface finish | Textured paint |
| Colour | RAL 7035 |
| Supply includes | Assembly parts |
| To fit | Enclosure type: CX pedestal Width: = 600 mm Depth: = 400 mm |
| Protection category NEMA | NEMA 1 NEMA 12 |
| IP protection category to IEC 60529 | IP 55 |
| Packs of | 1 pc(s). |
| Net weight | 4.4 kg |
| Gross weight | 4.411 kg |
| Customs tariff number | 94039910 |
| ETIM 9 | EC000784 |
| ETIM 8 | EC000784 |
| ECLASS 8.0 | 27180504 |
| Product description | CX cover plate, for CX pedestal, for WxD: 600x400 mm, sheet steel |

Approvals

Approvals

| | |
|--------------|---------------------------|
| Approvals | UL + C-UL (listed) |
| Explanations | Declaration of conformity |
