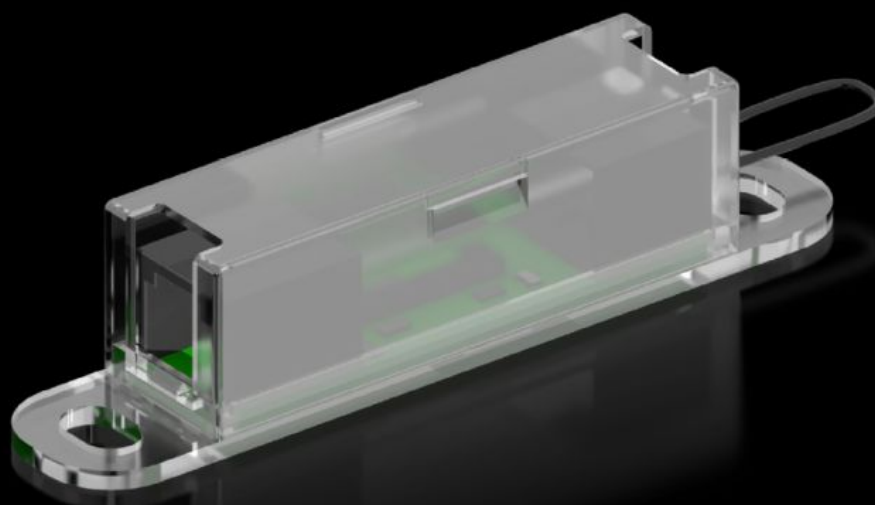
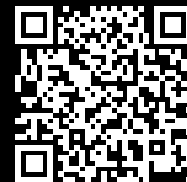


Rittal – The System.

Faster – better – everywhere.



DK 7030.128 CMC III sensors

State: 23/07/2025 (Source: [rittal.com/sg-en](https://www.rittal.com/sg-en))

ENCLOSURES

POWER DISTRIBUTION

CLIMATE CONTROL

IT INFRASTRUCTURE

SOFTWARE & SERVICES

FRIEDHELM LOH GROUP



DK 7030.128 - CMC III sensors

CMC III access sensor VX

Features

Model No.	DK 7030.128
Design	Access sensor VX
Product description	CMC III sensors are used for monitoring the physical environment and can be connected directly to the PU via a CAN bus connection cable RJ45. The sensors may also be linked together to form a bus.
Benefits	Fast connection and automatic detection via plug & play Power is supplied via the CAN-BUS interface.
Applications	Enclosure monitoring in IT, industry and facility management Monitoring of enclosures, rooms and containers in the IT environment
Function principle	Recording of physical ambient parameters
Design	Sensor: Reed contact/magnet Max. 5 reed contacts in series
Material	Plastic
Supply includes	Sensor Mounting plate Assembly parts Access sensor VX Cable 0.5 m
Connection to the CAN bus	Indirect, via CMC III CAN bus interfaces
Operating temperature range	5 °C...45 °C
Ambient humidity (non-condensing)	5...95 %
Packs of	1 pc(s).
Net weight	0.085
Gross weight	0.09

Features

PCF per pack (cradle-to-gate)	0.3 kg CO2 eq (Cat B)
Note on PCF category	Category B: PCF value (cradle-to-gate) based on the product weight, approximately calculated and self-declared
Customs tariff number	85319000
EAN	4028177925830
ETIM 9	EC002627
ECLASS 8.0	27189253

Approvals

Explanations	Declaration of conformity
--------------	---------------------------