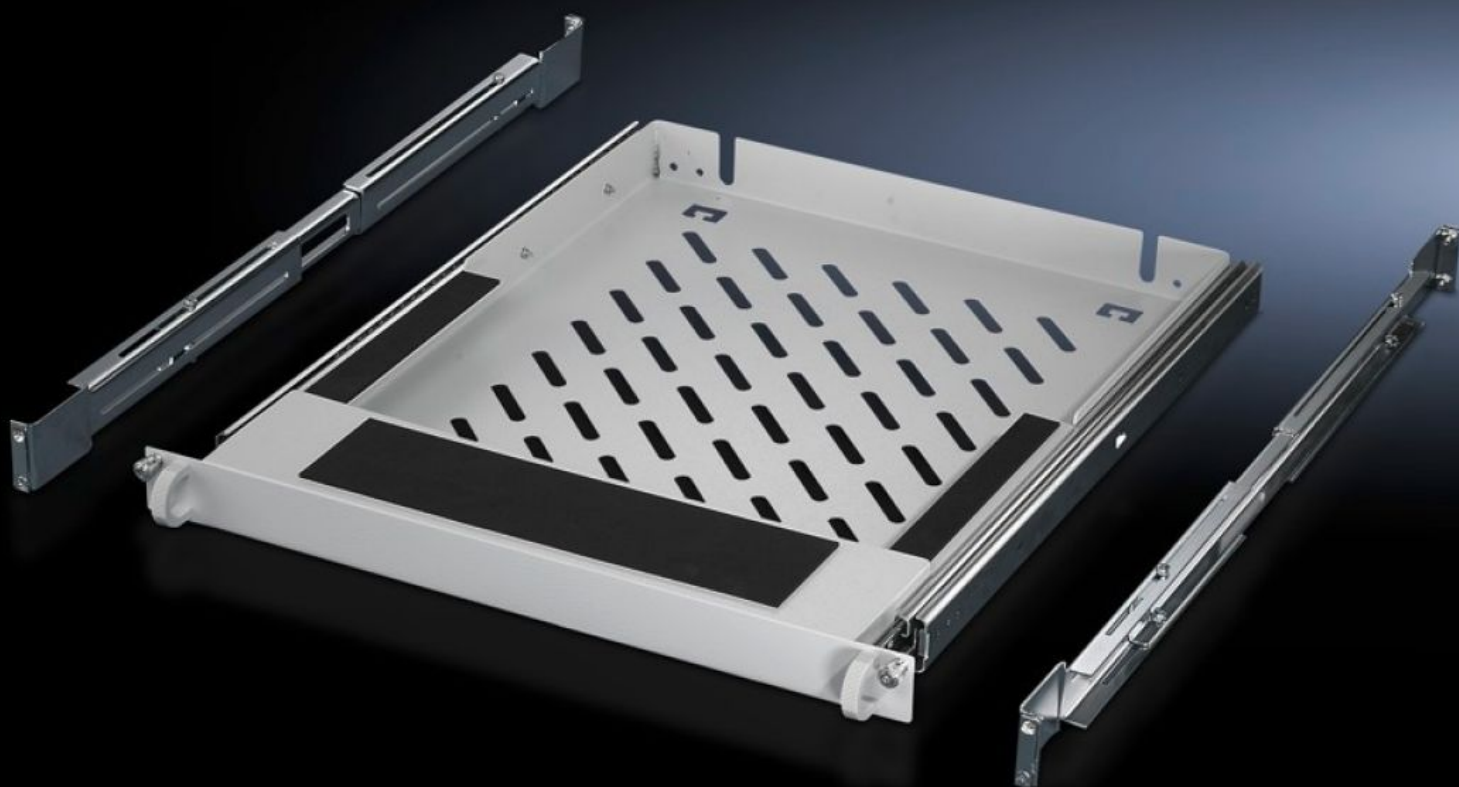
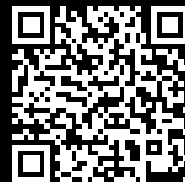


Rittal – The System.

Faster – better – everywhere.



DK 7063.888

Drawer 482.6 mm (19")

State: 05/06/2025 (Source: [rittal.com/sg-en](https://www.rittal.com/sg-en))

ENCLOSURES

POWER DISTRIBUTION

CLIMATE CONTROL

IT INFRASTRUCTURE

SOFTWARE & SERVICES

FRIEDHELM LOH GROUP



DK 7063.888 - Drawer 482.6 mm (19") for keyboard

For attaching to the 482.6 mm (19") mounting angles front and rear, suitable for standard keyboards > 482.6 mm (19"), keyboard support with non-slip base, plus wrist support.

Features

Model No.	DK 7063.888
Product description	For attaching to the 482.6 mm (19") mounting angles front and rear. Suitable for standard keyboards > 482.6 mm (19"). Keyboard support with non-slip base, plus wrist support. Depth-variable installation from 610 – 950 mm. Clearance opening W x H x D: 408 x 40 x 550 mm.
Material	Sheet steel
Colour	RAL 7035
Supply includes	Assembly parts without keyboard
Dimensions	Width: 482.6 mm
Note	For mounting on L-shaped mounting angles, cranked mounting angles or mounting frames
Packs of	1 pc(s).
Net weight	8.028
Gross weight	8.451
Customs tariff number	94039910
EAN	4028177258983
ECLASS 8.0	27189261

Tender text

482.6 mm (19") standard keyboard drawer

Drawer with assembly materials, without keyboard

Material: Sheet steel, spray finished in RAL 7035