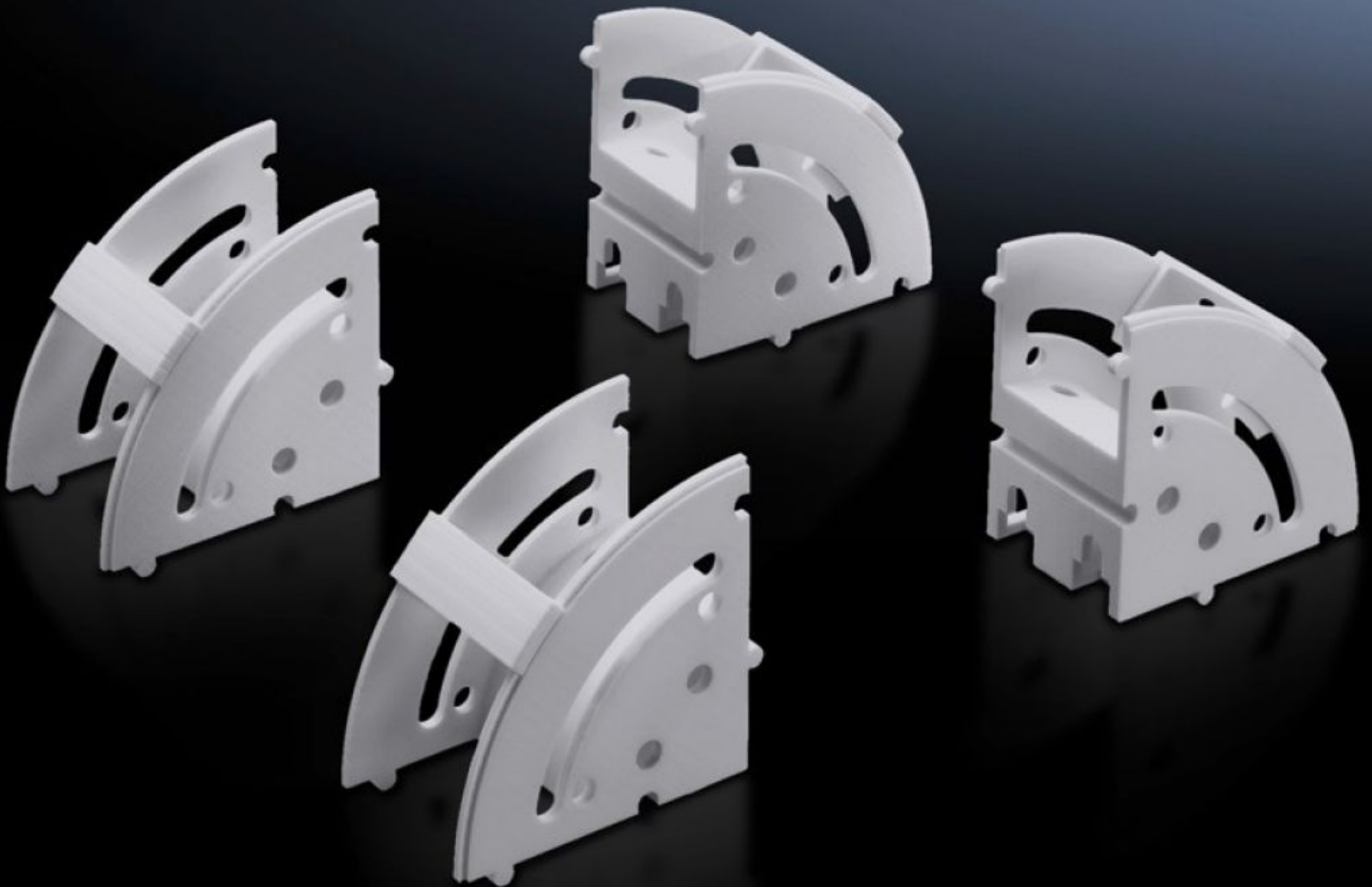


Rittal – The System.

Faster – better – everywhere.



DK 7064.100 Cable manager

State: 15/06/2026 (Source: rittal.com/sg-en)

ENCLOSURES

POWER DISTRIBUTION

CLIMATE CONTROL

IT INFRASTRUCTURE

SOFTWARE & SERVICES

FRIEDHELM LOH GROUP



DK 7064.100 - Cable manager

For system-compatible cable deflection and to accommodate surplus cables and excess length, the elements may optionally be used individually or in combination for cable routing.



Features

| | |
|---------------------|--|
| Model No. | DK 7064.100 |
| Product description | For system-compatible cable deflection while complying with minimal bending radii and to accommodate surplus cables and excess length. The elements may optionally be used individually or in combination for cable routing. They may be combined into semi-circular or circular elements. |
| Benefits | Simple assembly with tool-free quick-release fastening Alternatively suitable for screw-fastening Integral multifunctional punching for attaching cable routing components Integral mounting holes for fixing the PDUs in a 7 U pitch pattern via a keyhole recess |
| Applications | For vertical cable routing and strain relief with network and server applications |
| Material | Plastic to UL 94-V0 |
| Colour | RAL 7035 |
| Supply includes | Mounting clips and assembly parts |
| Packs of | 8 pc(s). |
| Net weight | 0.544 kg |
| Gross weight | 0.557 kg |

Features

| | |
|-----------------------|----------|
| Customs tariff number | 39269097 |
| ETIM 9 | EC002624 |
| ECLASS 8.0 | 27189265 |

Tender text

Cable manager, Basic kit

For system-compatible cable deflection while complying with minimal bending radii and to accommodate surplus cables and excess length. The elements may optionally be used individually or in combination for cable routing. They may be combined into semi-circular or circular elements. As the mounting distance between the elements grows larger, the deflection radius of the cables may optionally be enlarged, or the cable route designed individually. The option of securing elements on their straight-edge side supports the use of corners and edges, to allow protected cable routing around them.

Mounting clips for use above the arc hold the routed cables back within the elements.

The elements are also bayable in an axial direction to allow U-based cable routing to the mounting level, or channelling of the cable sections.

Material:

Plastic, UL 94-V0

Colour:

RAL 7035

Supply includes:

Packs of 8

Mounting clip
and assembly parts.