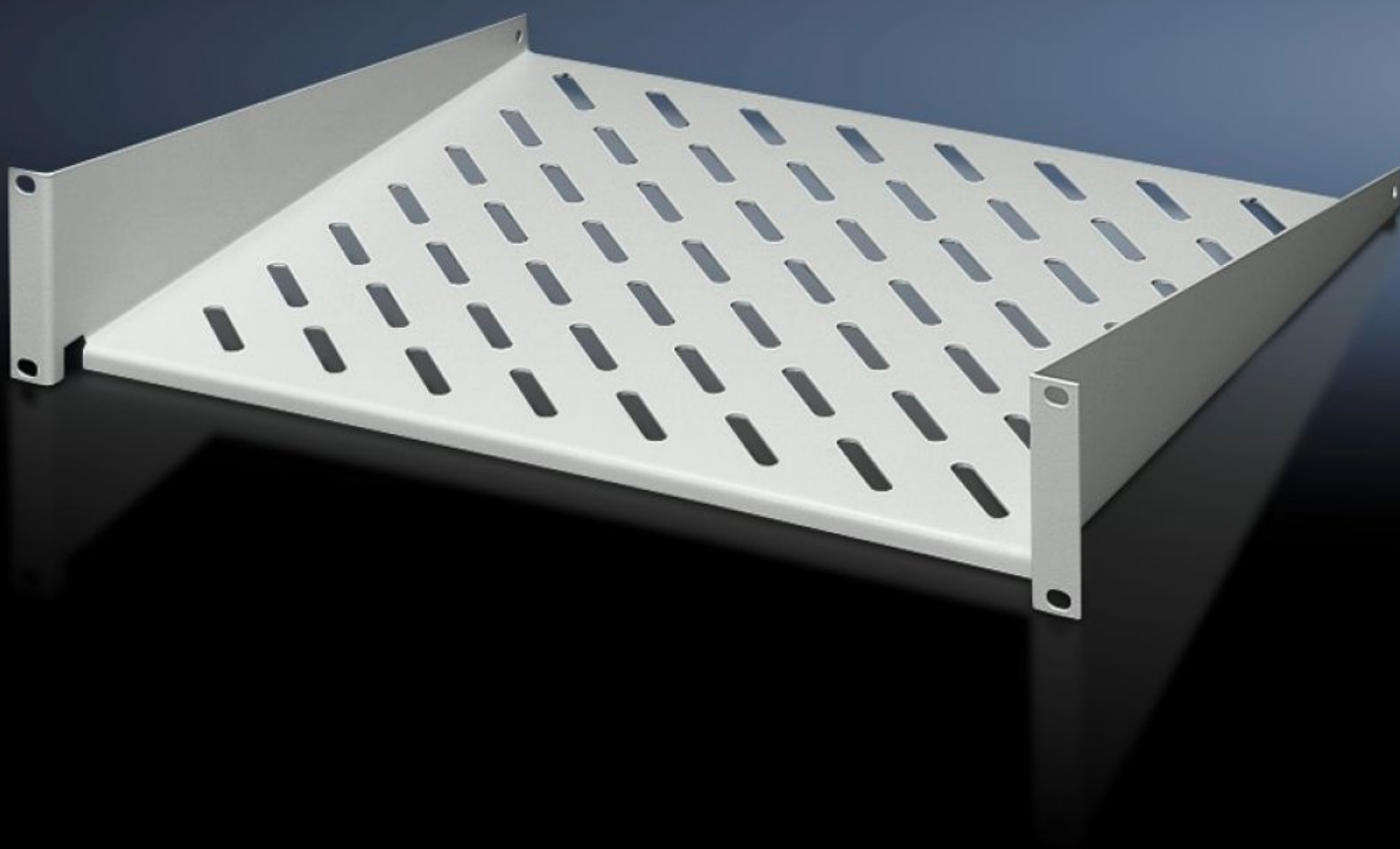


Rittal – The System.

Faster – better – everywhere.



DK 7119.250

**Component shelf 2 U, static
installation**

State: 31/01/2026 (Source: rittal.com/sg-en)

ENCLOSURES

POWER DISTRIBUTION

CLIMATE CONTROL

IT INFRASTRUCTURE

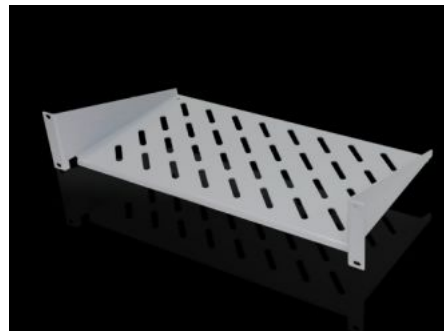
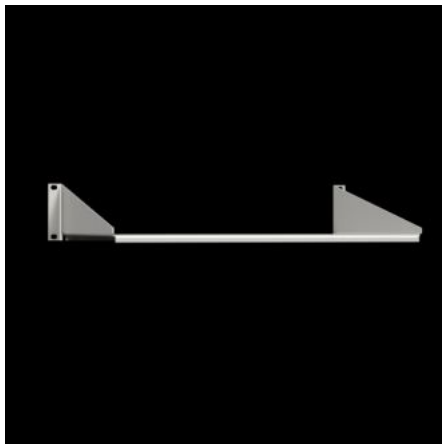
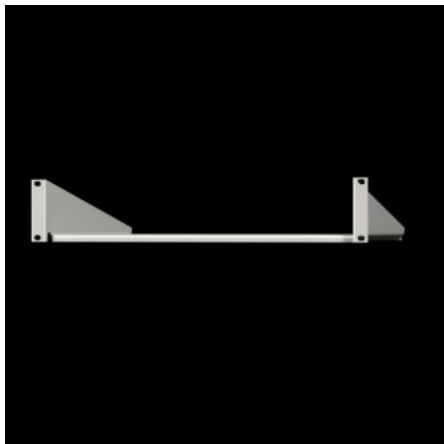
SOFTWARE & SERVICES

FRIEDHELM LOH GROUP



DK 7119.250 - Component shelf 2 U, static installation

Component shelf 2 U, static installation for attachment to the 482.6 mm (19") system punchings.
Load capacity: 25 kg.



Features

Model No.	DK 7119.250
Design	482.6 mm (19")
Product description	For mounting between 482.6 mm (19") mounting angles.
Material	Sheet steel
Surface finish	Spray-finished
Colour	RAL 7035
Load capacity	25 kg surface load, static
Note	Not suitable for combination with telescopic slides.
Dimensions	Width: 482.6 mm Depth: 250 mm
Packs of	1 pc(s).
Net weight	1.92
Gross weight	2.28
PCF per pack (cradle-to-gate)	9 kg CO2 eq (Cat B)
Note on PCF category	Category B: PCF value (cradle-to-gate) based on the product weight, approximately calculated and self-declared

Features

Customs tariff number	94039910
EAN	4028177187207
ETIM 9	EC002620
ECLASS 8.0	27189261

Tender text

Component shelf, 2 U, static

Load capacity: 25 kg surface load, static

Material: Sheet steel, spray finished in RAL 7035

Dimensions (W x H x D): 483 mm x 88 mm x 250 mm