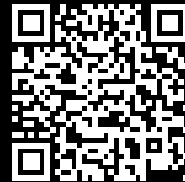


Rittal – The System.

Faster – better – everywhere.



TS 7526.964 Mounting plate

State: 05/08/2025 (Source: [rittal.com/sg-en](https://www.rittal.com/sg-en))

ENCLOSURES

POWER DISTRIBUTION

CLIMATE CONTROL

IT INFRASTRUCTURE

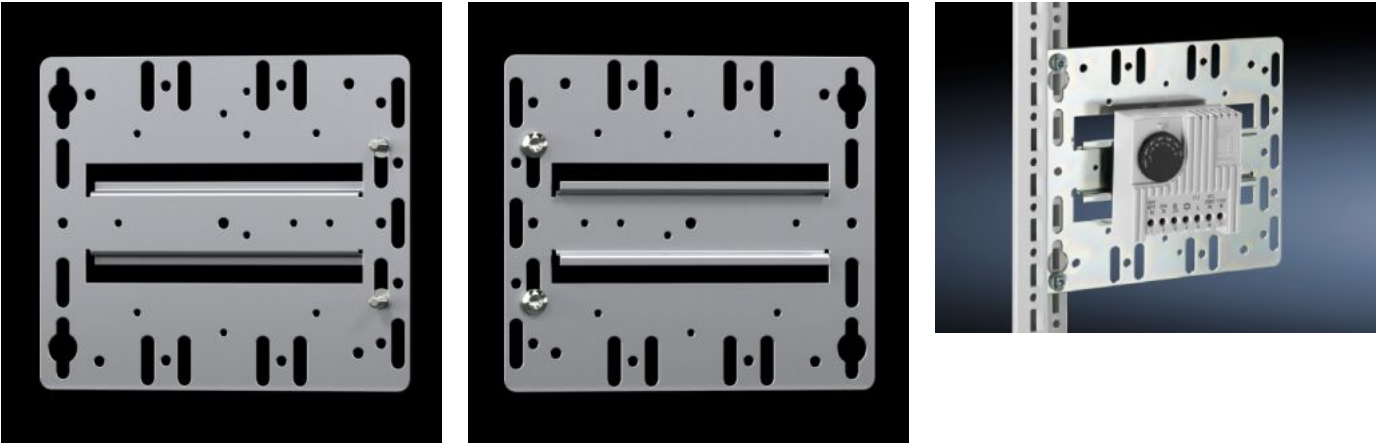
SOFTWARE & SERVICES

FRIEDHELM LOH GROUP



TS 7526.964 - Mounting plate with integral top-hat rail

May be screw-fastened, with integral top-hat rail for direct snap-mounting of components such as speed control, enclosure internal thermostat and hygostat.



Features

Model No.	TS 7526.964
Product description	For direct snap-mounting of components such as speed control, enclosure internal thermostat and hygostat.
Material	Sheet steel
Surface finish	Zinc-plated
Supply includes	Mounting plate Assembly parts
To fit	Enclosure type: AX VX VX SE AX IT VX IT TE
Packs of	1 pc(s).
Net weight	0.196
Gross weight	0.206
PCF per pack (cradle-to-gate)	0.8 kg CO2 eq (Cat B)

Features

Note on PCF category	Category B: PCF value (cradle-to-gate) based on the product weight, approximately calculated and self-declared
Customs tariff number	73269098
EAN	4028177246799
ETIM 9	EC000213
ECLASS 8.0	27189234

Tender text

Mounting plate with integral top-hat rail
Material: Sheet steel, zinc-plated, passivated