

Rittal – The System.

Faster – better – everywhere.



AX 7645.350

Wall-mounted enclosures AX IT

State: 05/09/2025 (Source: rittal.com/sg-en)

ENCLOSURES

POWER DISTRIBUTION

CLIMATE CONTROL

IT INFRASTRUCTURE

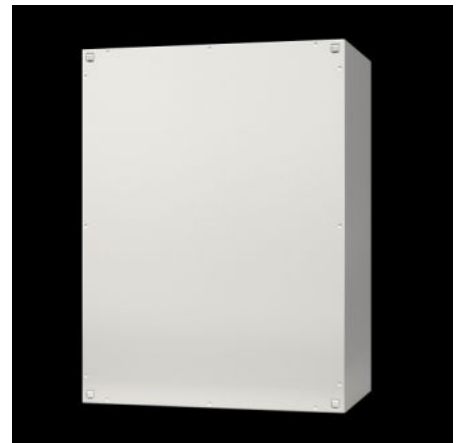
SOFTWARE & SERVICES

FRIEDHELM LOH GROUP



AX 7645.350 - Wall-mounted enclosures AX IT with 482.6 mm (19") mounting angles, depth-variable

IT wall-mounted enclosure with high protection category, for use in industrial environments. With depth-variable 482.6 mm (19") mounting angle and gland plate with brush strip for cable entry in the enclosure base. Protection category up to IP 66 (depending on the selected gland plate).



Features

| | |
|---------------------|---|
| Model No. | AX 7645.350 |
| Design | Wall-mounted enclosures IT with 482.6 mm (19") mounting angles, depth-variable |
| Product description | IT wall-mounted enclosure based on AX, with high protection category, for use in industrial environments. Secure, protected integration of IT directly into your production plant processes. |
| Benefits | <p>Fully pre-assembled IT enclosure for immediate accommodation of 482.6 mm (19") IT components, with depth-variable mounting angles</p> <p>Welded enclosure construction with all-round solid body ensures maximum protection for installed components, up to IP 66</p> <p>Door hinged on the right, may be swapped to the left</p> <p>Maximum usable interior volume with an extremely compact design</p> <p>Individual interior configuration</p> <p>Maximum cut-out in the enclosure base with optimised gland plates increases the space for cable routing by up to 33%</p> <p>Convenient cable entry from below via a gland plate with integral brush strip</p> |

Features

| | |
|------------------------------------|--|
| Material | Sheet steel |
| Surface finish | Enclosure and door: Dipcoat primed, powder-coated on the outside, textured paint Interior installation: Zinc-plated |
| Colour | RAL 7035 |
| Supply includes | Pre-assembled IT enclosure with hinged door, of all-round solid construction Cam lock with 3 mm double-bit insert Gland plate with brush strip 482.6 mm (19") mounting angle, front, mounted onto four interior installation rails with depth adjustment in 25 mm pitch pattern Mounting bracket C rail, fastened to the rear panel |
| Units | 15 U |
| Dimensions | Width: 600 mm Height: 760 mm Depth: 350 mm |
| Installation depth | 278 mm |
| Installation height for components | 15 U |
| Door hinge position | right, may be swapped to the left |
| Number of locks | 2 |
| Installation options | Pre-configured mounting bracket including C rail for cable clamping Mounting bracket to accommodate a central earth rail Mounting bracket for mounting a 482.6 mm (19") socket strip |
| Note | Variant with UL approval available on request |
| Basic material | Sheet steel |
| Lock | Lock version: Cam lock with 3 mm double-bit lock insert Number of locks: 2 |
| Protection category to IEC 60 529 | IP 10 (up to IP 66 on request) Up to IP 66 (depending on the selected gland pate) |
| Gland plate | Size: 7 Qty.: 1 |

Features

| | |
|-------------------------------|--|
| Number of locks | 2 |
| Packs of | 1 pc(s). |
| Net weight | 29 |
| Gross weight | 29.64 |
| PCF per pack (cradle-to-gate) | 112.9 kg CO2 eq (Cat B) |
| Note on PCF category | Category B: PCF value (cradle-to-gate) based on the product weight, approximately calculated and self-declared |
| Customs tariff number | 94032080 |
| EAN | 4028177942417 |
| E-Number Sweden | E7238509 |
| ETIM 9 | EC002500 |
| ECLASS 8.0 | 27180208 |

Approvals

| | |
|--------------|---|
| Explanations | Declaration of conformity Declaration of conformity UK |
|--------------|---|

Tender text

Wall-mounted IT enclosure based on AX, with high protection category, for use in industrial environments.

Fully pre-assembled wall-mounted distribution enclosure with 482.6 mm (19") mounting level, 15 U, wall-mounted distribution enclosure of 1.5 mm sheet steel, with gland plate for cable entry via brush strips in the enclosure base.

Door of 1.5 mm sheet steel with two cam locks and 3 mm double-bit insert, which can be exchanged for a mini comfort handle. Door hinged on the right, but may be swapped to the left.

482.6 mm (19") mounting angles mounted onto interior installation rails over the enclosure depth on the left and right. Depth adjustment based on a 25 mm pitch pattern.

The mounting angles incorporate side cut-outs via which cables can be routed between the front and rear component areas, where required.

Incoming and outgoing cables can be routed conveniently via a gland plate with two brush strips in the enclosure base. After entry, the cables can be clamped by way of a pre-assembled mounting bracket with C rail. Above the C rail, there is a mounting bracket with drill holes for mounting of a 482.6 mm (19") socket strip or a central earth rail.

Protection class:

Protection category IP 10 to IEC 60 529

The protection category of the enclosure can be raised to IP 66 by replacing the gland plate with a solid version.

Surface finish:

Painted in RAL 7035.

Enclosure and door: Dipcoat-primed, powder-coated on the outside, textured paint.

Interior installation: Zinc-plated.

Maximum installation depth: 278 mm

Dimensions (WHD): 600x760x350 mm

Model No: AX IT 7645.350

Manufacturer: Rittal GmbH & Co. KG