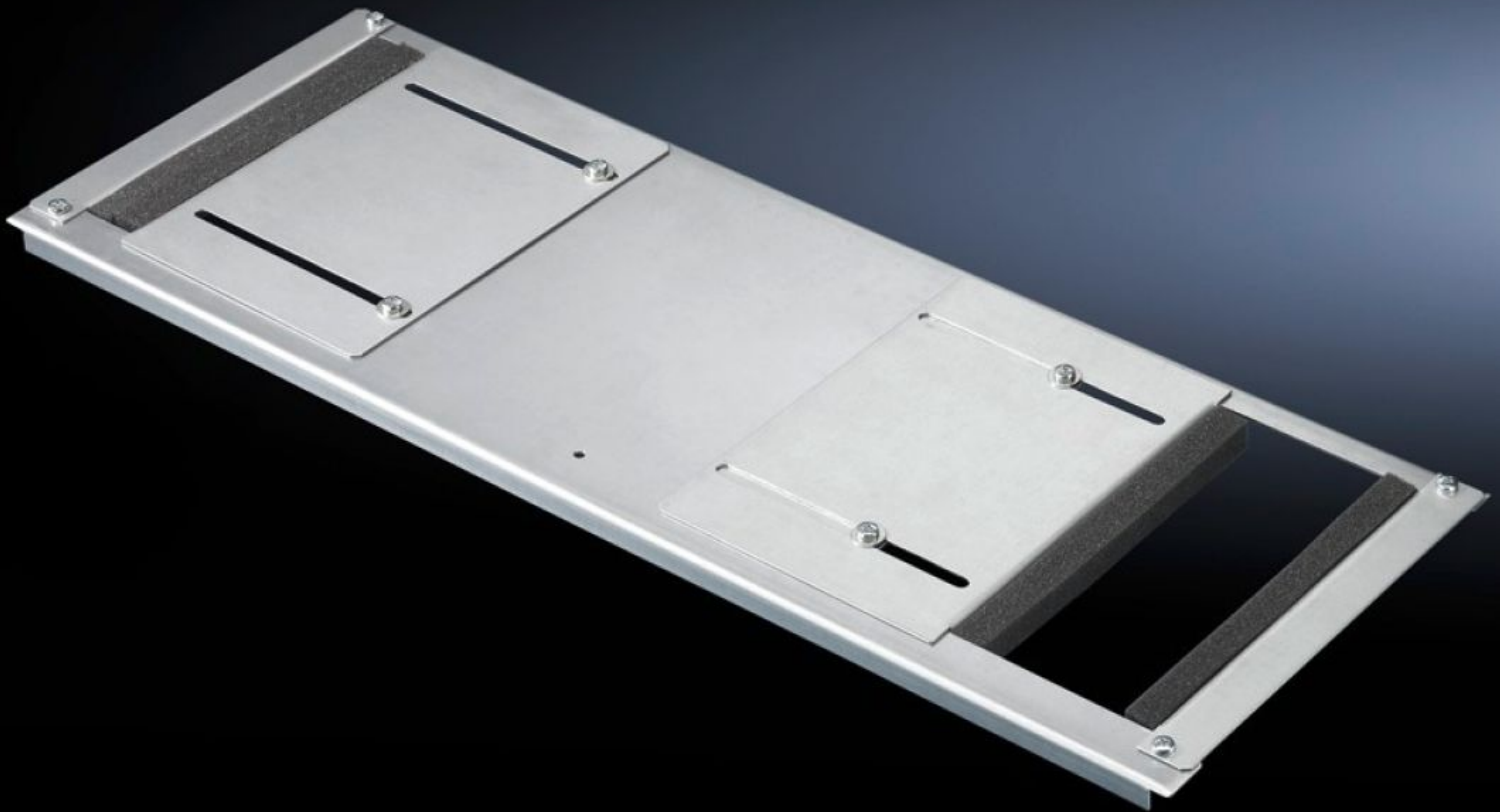


Rittal – The System.

Faster – better – everywhere.



DK 7825.388

Gland plate modules for cable entry

State: 23/05/2026 (Source: rittal.com/sg-en)

ENCLOSURES

POWER DISTRIBUTION

CLIMATE CONTROL

IT INFRASTRUCTURE

SOFTWARE & SERVICES

FRIEDHELM LOH GROUP



DK 7825.388 - Gland plate modules for cable entry for TS, TS IT, VX SE

Gland plate modules for cable entry for DK-TS, for use in the base frame of the network enclosure. Used in exchange for an existing gland plate of the same depth.

Features

Model No.	DK 7825.388
Design	Version for cable entry with rubber cable clamp strip at the sides:
Product description	With adjustable openings on both sides and rubber cable clamp strip. The two-piece design even allows retrospective fitting of the base module with the cables already installed.
Material	Sheet steel Seal: Polyurethane foam, UL 94-HF1
Surface finish	Zinc-plated
Supply includes	Assembly parts Including clips
Note	Several gland module plates need to be combined to close off the base completely in the TS-IT
Dimensions	Depth: 237.5 mm
To fit	Enclosure type: TS IT Width: 800 mm
Packs of	1 pc(s).
Net weight	2.42 kg
Gross weight	2.62 kg
Customs tariff number	94039910
ETIM 9	EC002620
ECLASS 8.0	27189261
Product description	DK Gland plate module, For W: 800 mm, For side cable entry

Tender text

Gland plate module, multi-piece, for side cable entry for TS/FR(i)

With openings on both sides for cable entry, covered by sliding plates, with rubber cable clamp strips to seal and secure the inserted cables. Removable outer members make easy fitting or removal of the module possible even with the cables already inserted.

For enclosure width: 800 mm

Material: Sheet steel, zinc-plated

Supply includes: Assembly parts