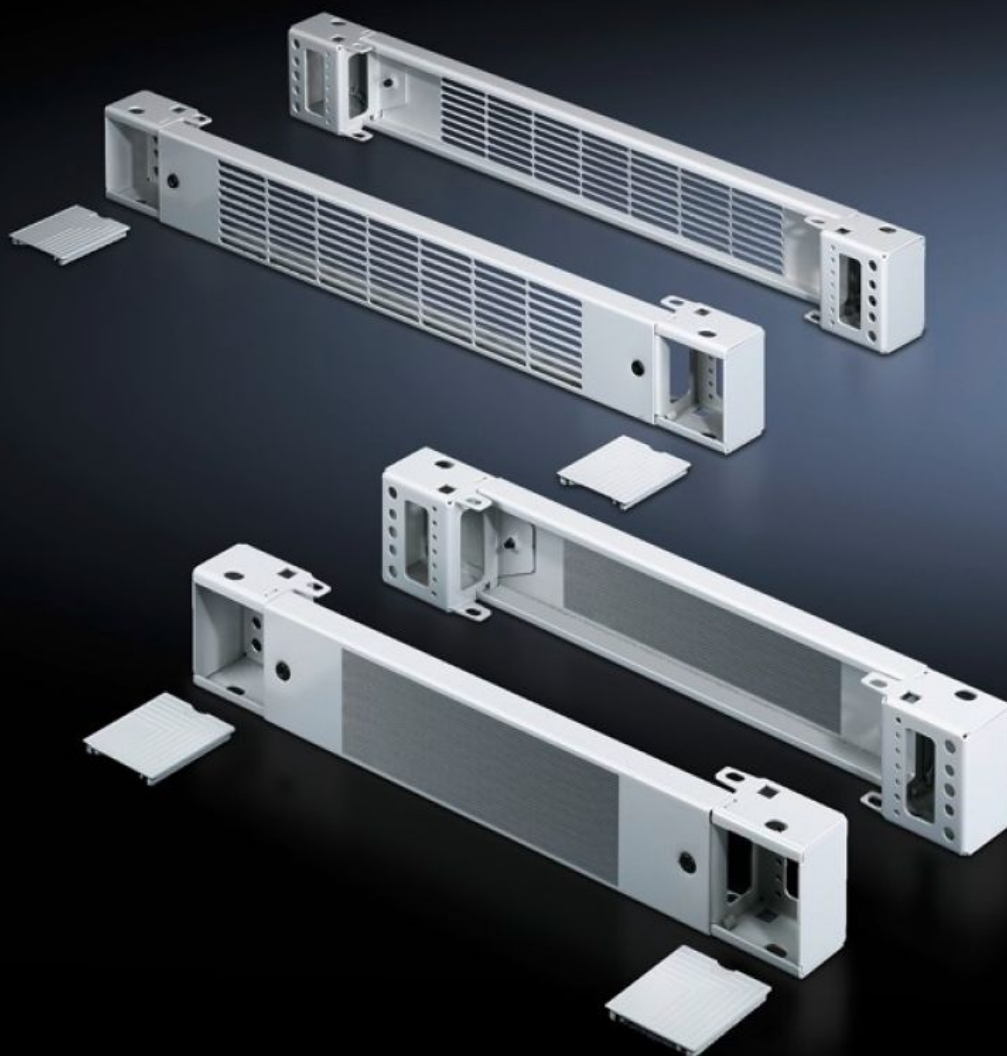


# Rittal – The System.

Faster – better – everywhere.



## TS 7825.603

## Base/plinth components, front and rear, 100 mm

State: 20/12/2025 (Source: [rittal.com/sg-en](http://rittal.com/sg-en))

ENCLOSURES

POWER DISTRIBUTION

CLIMATE CONTROL

IT INFRASTRUCTURE

SOFTWARE & SERVICES

FRIEDHELM LOH GROUP



# TS 7825.603 - Base/plinth components, front and rear, 100 mm Sheet steel, for TS, TS IT, SE, CM, TP, PC, IW, TE

Base/plinth component consisting of one trim panel and two pre-configured corner pieces.

## Features

Model No.	TS 7825.603
Design	Vented with designer cover
Product description	Base/plinth component consisting of one trim panel and two pre-configured corner pieces.
Material	Base/plinth components: Sheet steel Cover caps: Plastic
Surface finish	Spray-finished
Colour	RAL 7035 Cover caps: RAL 7035
Supply includes	2 base/plinth components 4 cover caps Assembly parts
Dimensions	Height: 100 mm
To fit	Enclosure type: TS: = 600 mm Enclosure type: SE Enclosure type: CM Enclosure type: TP Enclosure type: PC Enclosure type: IW Enclosure type: TS IT
Packs of	2 pc(s).
Net weight	3.6
Customs tariff number	94039910
EAN	4028177302709
ECLASS 8.0	27182003

# Tender text

Vented base/plinth components

2 base/plinth components, 4 covers, 4 screws and  
M12 captive nuts for mounting on the enclosure.

Material: Components: Sheet steel, spray finished in  
RAL 7035; Cover: Plastic

Dimensions (W x H): 600 mm x 100 mm