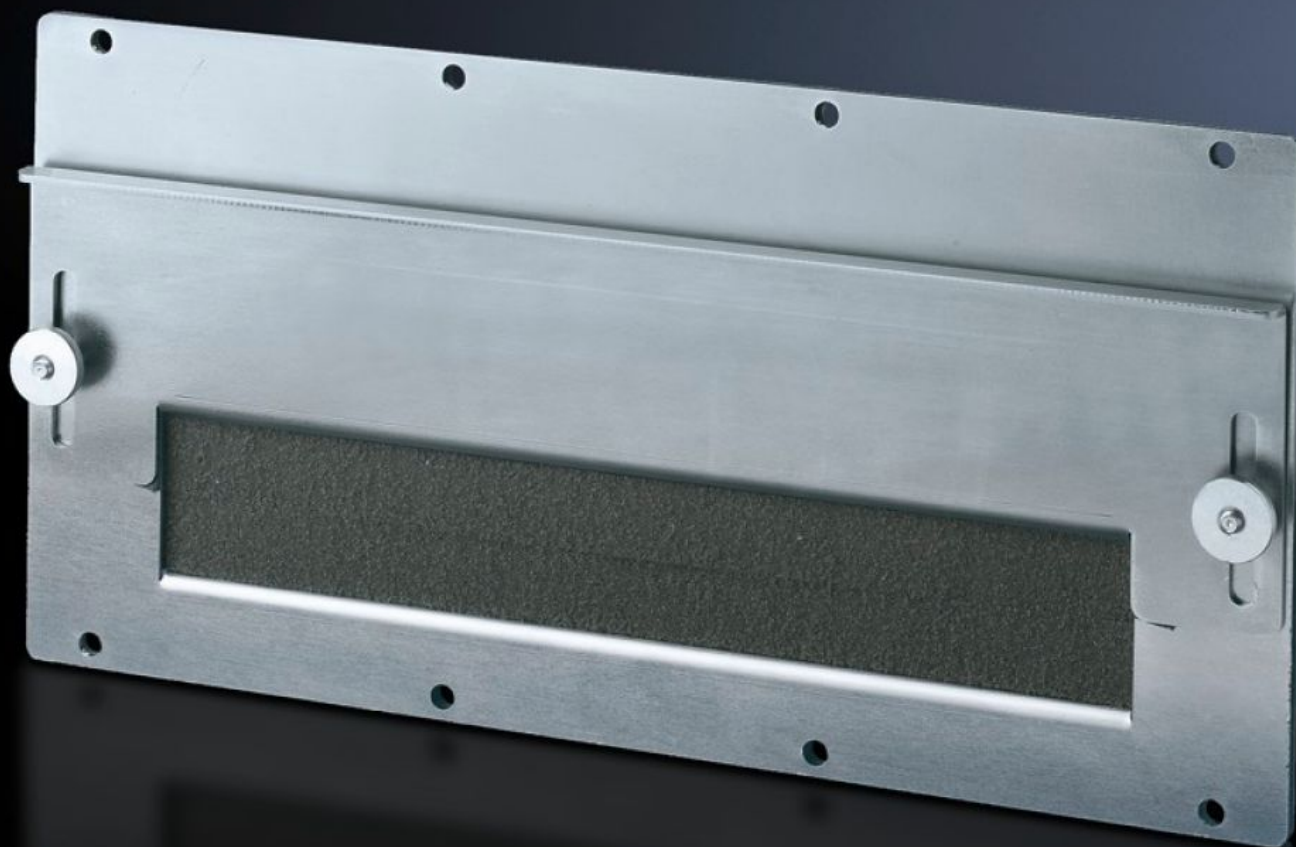


Rittal – The System.

Faster – better – everywhere.



SZ 8609.170 Module plates

State: 24/08/2025 (Source: rittal.com/sg-en)

ENCLOSURES

POWER DISTRIBUTION

CLIMATE CONTROL

IT INFRASTRUCTURE

SOFTWARE & SERVICES

FRIEDHELM LOH GROUP



SZ 8609.170 - Module plates for cable entry

For pre-assembled cable entry. Sealed, secure routing is achieved via adjustable angle brackets with inserted foam cable clamp strip. Fixed bracket, punched, for cable clamping.

Features

| | |
|-------------------------------|---|
| Model No. | SZ 8609.170 |
| Design | for cable entry |
| Product description | For the entry of pre-assembled cables. Sealed, secure routing is achieved via adjustable angle brackets with inserted foam cable clamp strip. Fixed bracket, punched, for cable clamping. |
| Material | Sheet steel, 2 mm |
| Surface finish | Zinc-plated |
| Supply includes | Seal and assembly parts |
| Packs of | 1 pc(s). |
| Net weight | 1.4 |
| Gross weight | 1.491 |
| PCF per pack (cradle-to-gate) | 5.7 kg CO2 eq (Cat B) |
| Note on PCF category | Category B: PCF value (cradle-to-gate) based on the product weight, approximately calculated and self-declared |
| Customs tariff number | 94039910 |
| EAN | 4028177211797 |
| ETIM 9 | EC000211 |
| ECLASS 8.0 | 27142421 |