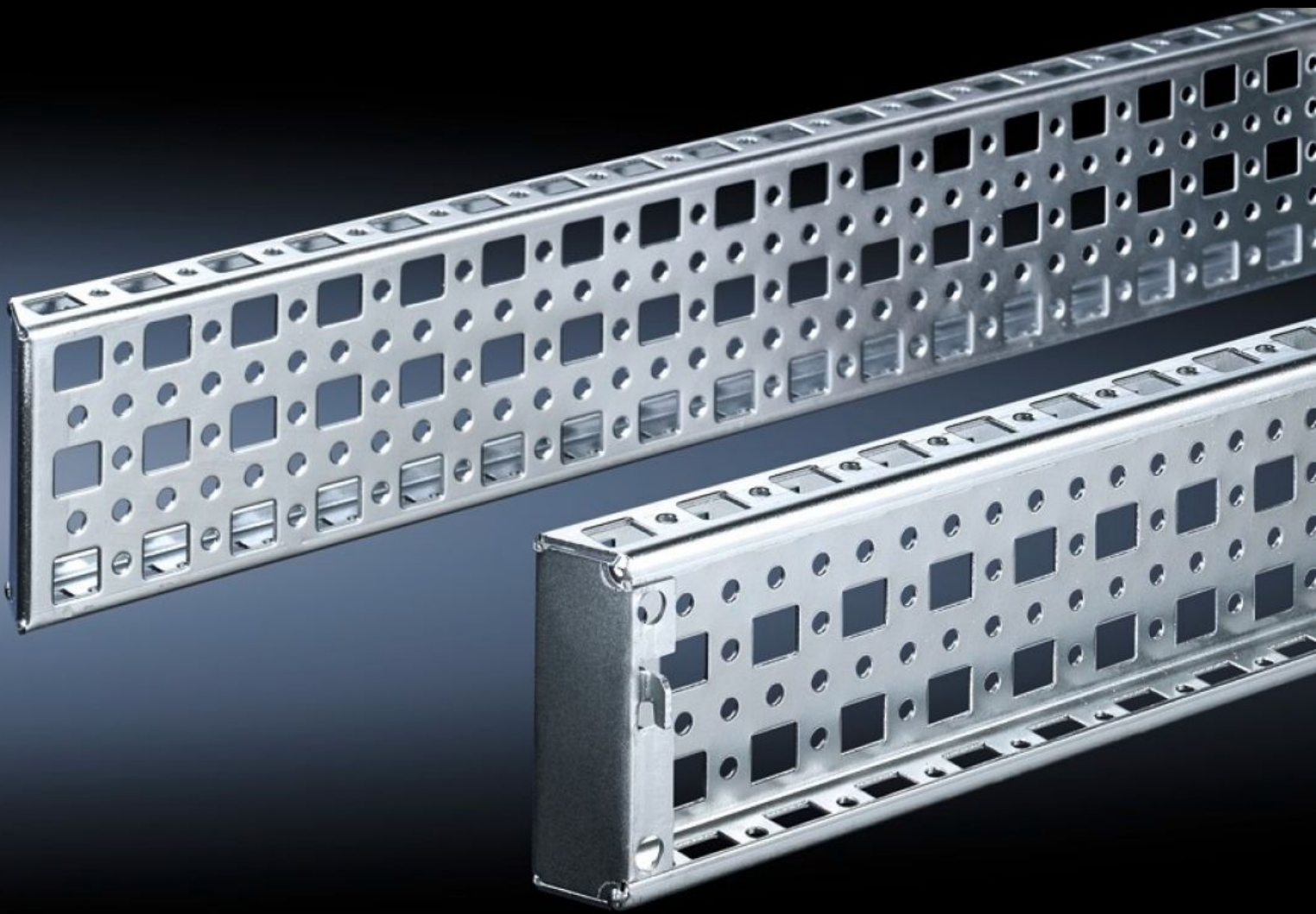


**Rittal – The System.**

Faster – better – everywhere.



**TS 8612.500**

**TS punched section with mounting  
flange, 23 x 73 mm**

State: 22/03/2026 (Source: [rittal.com/sg-en](http://rittal.com/sg-en))

ENCLOSURES

POWER DISTRIBUTION

CLIMATE CONTROL

IT INFRASTRUCTURE

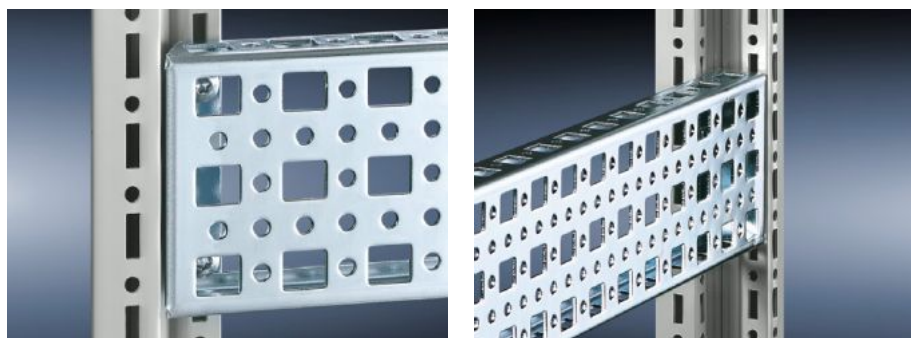
SOFTWARE & SERVICES

FRIEDHELM LOH GROUP



# TS 8612.500 - TS punched section with mounting flange, 23 x 73 mm

The alternative to the TS punched section with mounting flange 17 x 73 mm, with punchings for captive nuts/threaded blocks instead of the slotted holes top and bottom. Simply locate and secure.



## Features

Model No.	TS 8612.500
Product description	The alternative to the TS punched section with mounting flange 17 x 73 mm, with punchings for captive nuts/threaded blocks instead of the slotted holes top and bottom. Simply locate and secure.
Material	Sheet steel
Surface finish	Zinc-plated
Supply includes	Assembly screws
Installation options	On the vertical TS, VX SE enclosure section
To fit	Enclosure type: the inner mounting level Width/depth: 1,000 mm
Packs of	4 pc(s).
Net weight	4.264 kg
Gross weight	4.463 kg
Customs tariff number	73269098
ETIM 9	EC002625
ECLASS 8.0	27189234

# Features

---

Product description

TS punched section with mounting flange, 23 x 73 mm, for inner mounting level: W/D: 1000 mm