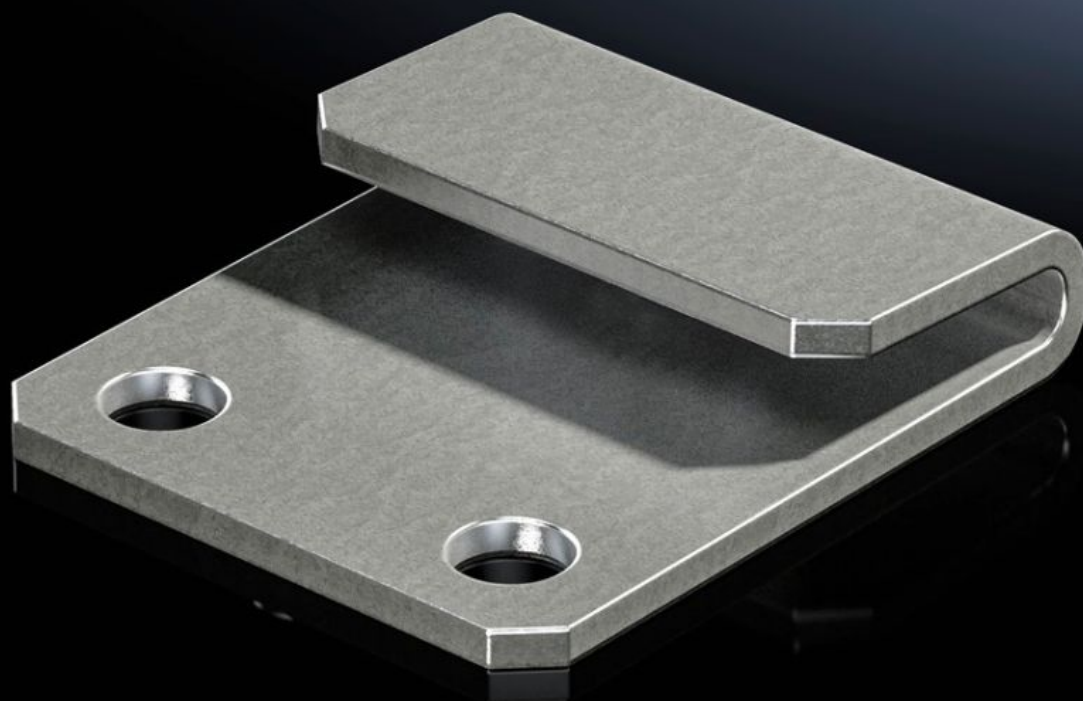


Rittal – The System.

Faster – better – everywhere.



VX 8617.352

Mounting plate attachment

State: 20/05/2025 (Source: rittal.com/sg-en)

ENCLOSURES

POWER DISTRIBUTION

CLIMATE CONTROL

IT INFRASTRUCTURE

SOFTWARE & SERVICES

FRIEDHELM LOH GROUP



VX 8617.352 - Mounting plate attachment Type C, for VX

For additional clamping and to reduce potential vibration of the mounting plate.



Features

Model No.	VX 8617.352
Product description	For additional clamping and to reduce potential vibration of the mounting plate.
Benefits	Simple mounting directly on the enclosure frame
Function principle	The mounting plate may be form-fit connected and clamped with the mounting plate attachment. Keeps the front of the mounting plate completely free for unrestricted use With a populated mounting plate and a dismantled rear panel, may be fitted from the rear
Material	Sheet steel
Surface finish	Zinc plated, passivated
Supply includes	Assembly parts
Packs of	10 pc(s).
Net weight	0.5
Gross weight	0.52
PCF per pack (cradle-to-gate)	2.3 kg CO2 eq (Cat B)
Note on PCF category	Category B: PCF value (cradle-to-gate) based on the product weight, approximately calculated and self-declared
Customs tariff number	73269098

Features

EAN	4028177927063
ETIM 9	EC002620
ECLASS 8.0	27189261
