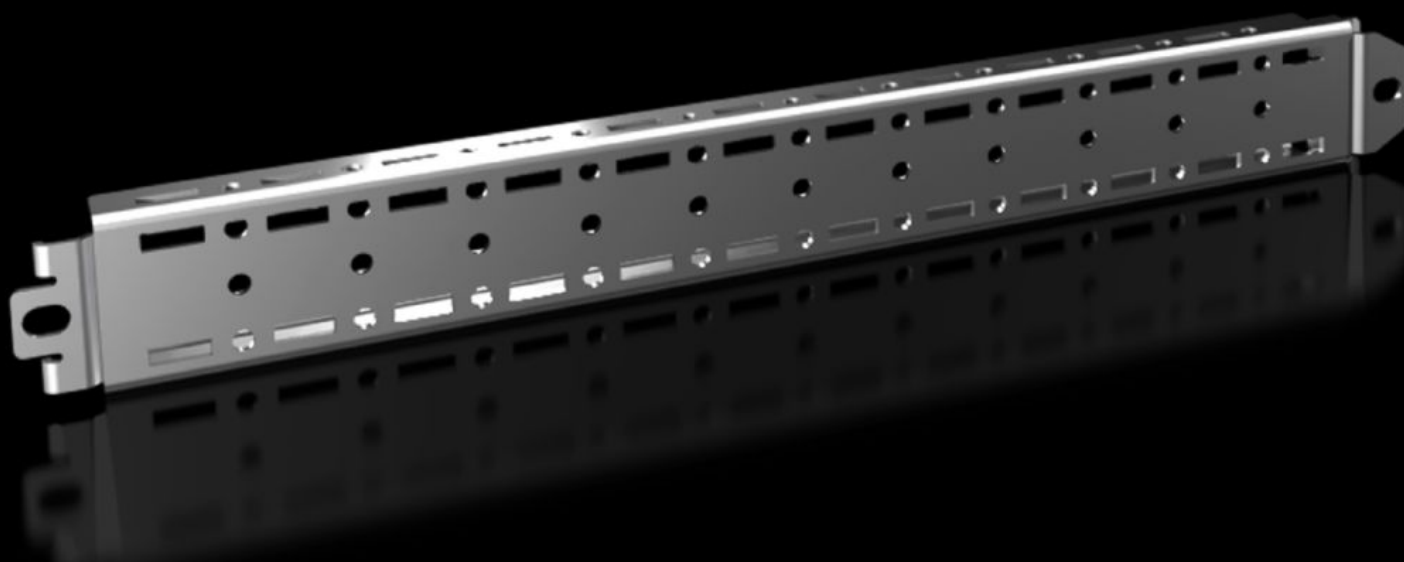


Rittal – The System.

Faster – better – everywhere.



VX 8617.700

Punched rail 18 x 39 mm

State: 04/08/2025 (Source: [rittal.com/sg-en](https://www.rittal.com/sg-en))

ENCLOSURES

POWER DISTRIBUTION

CLIMATE CONTROL

IT INFRASTRUCTURE

SOFTWARE & SERVICES

FRIEDHELM LOH GROUP



VX 8617.700 - Punched rail 18 x 39 mm for VX, VX SE

For variable, individual interior installation of the enclosure frame on the inner mounting level.

Features

| | |
|-----------------------|--|
| Model No. | VX 8617.700 |
| Product description | For variable, individual interior installation of the enclosure frame on the inner mounting level. |
| Benefits | May also be used in conjunction with other punched sections Prepared at the rear to accommodate cable ties for optimum cable routing inside the enclosure Simply insert into the system punchings, even with the mounting panel in its rearmost position |
| Material | Sheet steel |
| Surface finish | Zinc-plated |
| Supply includes | Assembly parts |
| Installation options | In VX on the inner mounting level, on the VX enclosure section In VX SE, on the enclosure section in conjunction with VX adaptor rail |
| Note | In enclosures with a mounting plate, 2 punched rails are already included with the supply. |
| To fit | Enclosure type: VX VX SE To fit width/depth: 400 mm |
| Packs of | 4 pc(s). |
| Net weight | 1.428 |
| Gross weight | 1.524 |
| Customs tariff number | 73269098 |
| EAN | 4028177921702 |
| ETIM 9 | EC002620 |
| ECLASS 8.0 | 27189234 |