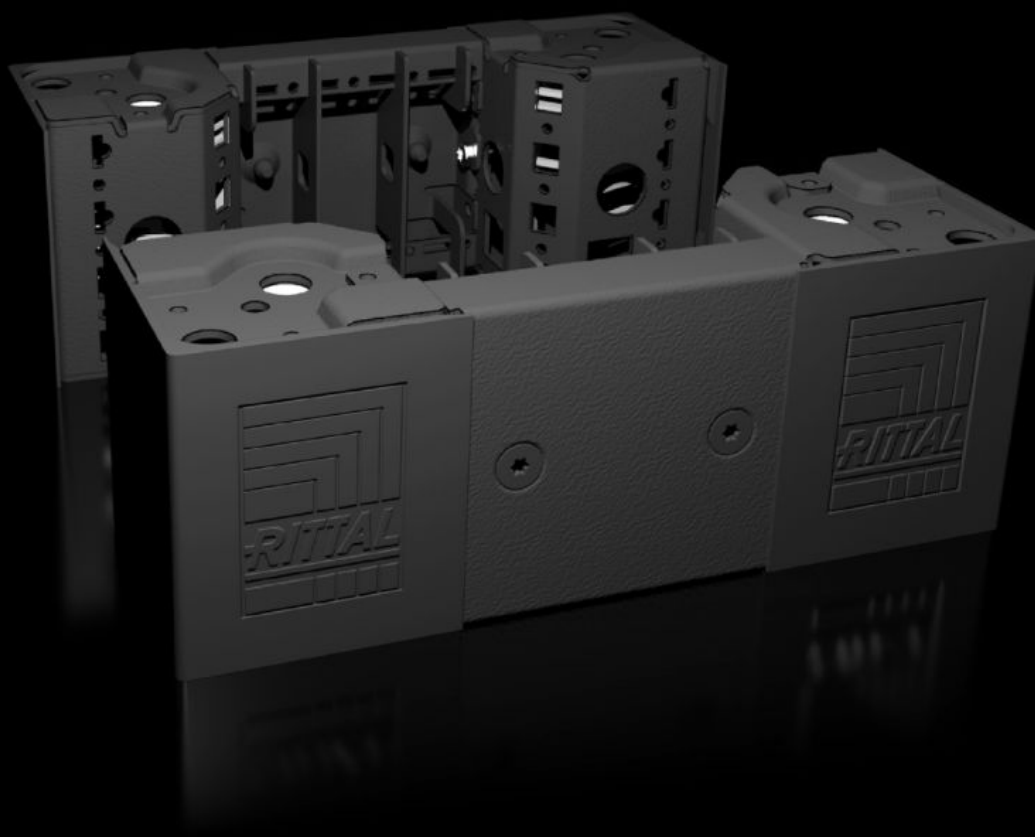
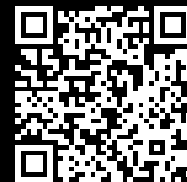


Rittal – The System.

Faster – better – everywhere.



VX 8640.000

Base/plinth corner piece with base/
plinth trim panels, front and rear,
100 mm

State: 09/01/2026 (Source: rittal.com/sg-en)

ENCLOSURES

POWER DISTRIBUTION

CLIMATE CONTROL

IT INFRASTRUCTURE

SOFTWARE & SERVICES

FRIEDHELM LOH GROUP



VX 8640.000 - Base/plinth corner piece with base/plinth trim panels, front and rear, 100 mm for VX, VX IT, VX SE, TE, TS, TS IT, TP, PC, IW

Heavy-duty base/plinth corner pieces with moulded self-positioning to the enclosure, may be used with or without trim panels depending on the application. Large openings in the base/plinth corner piece for optimum access to the screw-fastening point, may be concealed with a plastic corner and baying cover.

Features

Model No.	VX 8640.000
Product description	High-load capacity base/plinth corner pieces with moulded self-positioning to the enclosure, may be used with or without trim panels depending on the application. Large openings in the base/plinth corner piece for optimum access to the screw-fastening point, may be concealed with a plastic corner and baying cover.
Material	Base/plinth corner piece: Sheet steel Base/plinth trim panel front/rear: Sheet steel Corner and baying cover: Plastic
Colour	RAL 9005
Supply includes	4 base/plinth corner pieces, 100 mm high 4 corner covers 1 baying cover 2 base/plinth trim panels, front/rear, 100 mm high Assembly parts
Note	Side base/plinth trim panels finish off a base/plinth unit or provide additional stabilisation between base/plinths or enable interior configuration of the base/plinth
Dimensions	Height: 100 mm

Features

To fit	Enclosure type: VX VX IT VX SE TS IT TX CableNet Width: = 300 mm
Type rating to UL 50E	Type 1 Type 12
Weight/pack	3.72 kg
Packs of	2 pc(s).
Net weight	3.2
Customs tariff number	94039910
EAN	4028177958746
ETIM 9	EC000721
ETIM 8	EC000721
ECLASS 8.0	27182003

Approvals

Approvals	UL + C-UL - FTTA
-----------	------------------