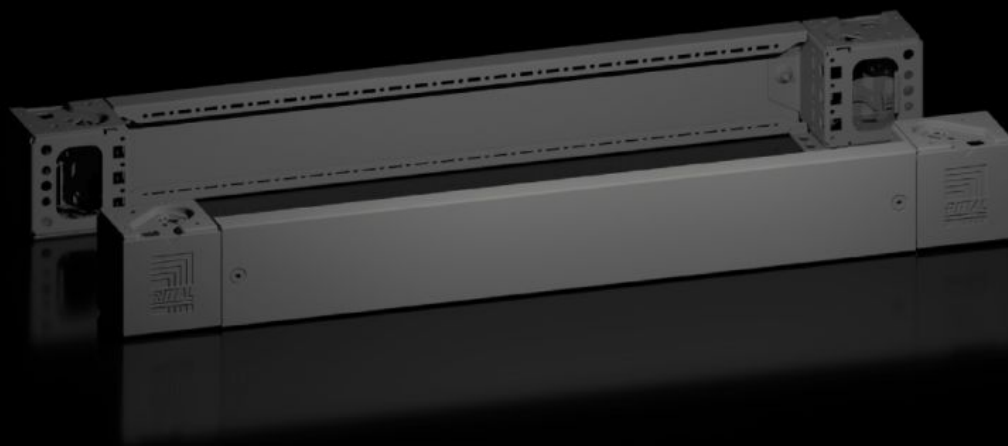


# Rittal – The System.

Faster – better – everywhere.



## VX 8660.004

### Base/plinth corner pieces with base/plinth trim panels, front and rear

State: 23/07/2025 (Source: [rittal.com/sg-en](http://rittal.com/sg-en))

ENCLOSURES

POWER DISTRIBUTION

CLIMATE CONTROL

IT INFRASTRUCTURE

SOFTWARE & SERVICES

FRIEDHELM LOH GROUP



# VX 8660.004 - Base/plinth corner pieces with base/plinth trim panels, front and rear for base/plinth system VX, sheet steel

Base/plinth corner pieces with trim panels for flexible cable entry.



## Features

|                 |   |
|-----------------|---|
| Model No.       | VX 8660.004   |
| Benefits        | Reliable – Excellent stability of the base/plinth<br>Flexible – Countless interior installation options with VX accessories<br>Simple – Flush termination between the baying points |
| Material        | Base/plinth corner piece: Sheet steel<br>Base/plinth trim panel front/rear: Sheet steel<br>Corner and baying cover: Plastic   |
| Colour          | RAL 9005  |
| Supply includes | 4 corner covers<br>Assembly parts<br>4 base/plinth corner pieces, 100 mm high<br>2 base/plinth trim panels, front/rear, 100 mm high   |
| Note            | Side base/plinth trim panels finish off a base/plinth unit or provide additional stabilisation between base/plinths or enable interior configuration of the base/plinth             |
| Dimensions      | Height: 100 mm  |

# Features

|                               |  |
|-------------------------------|--|
| To fit                        | Enclosure type: VX<br>VX IT<br>VX SE<br>TX CableNet<br>TS<br>TS IT<br>TP<br>PC<br>IW<br>CX<br>Width: = 850 mm  |
| Type rating to UL 50E         | Type 1<br>Type 12  |
| Weight/pack                   | 5.55 kg  |
| Packs of                      | 2 pc(s).   |
| Net weight                    | 5.36   |
| Gross weight                  | 5.551  |
| PCF per pack (cradle-to-gate) | 21.1 kg CO2 eq (Cat B)   |
| Note on PCF category          | Category B: PCF value (cradle-to-gate) based on the product weight, approximately calculated and self-declared |
| Customs tariff number         | 94039910   |
| EAN                           | 4028177978065  |
| ETIM 9                        | EC000721   |
| ETIM 8                        | EC000721   |
| ECLASS 8.0                    | 27182003   |

# Approvals

|           |                  |
|-----------|------------------|
| Approvals | UL + C-UL - FTTA |
|-----------|------------------|