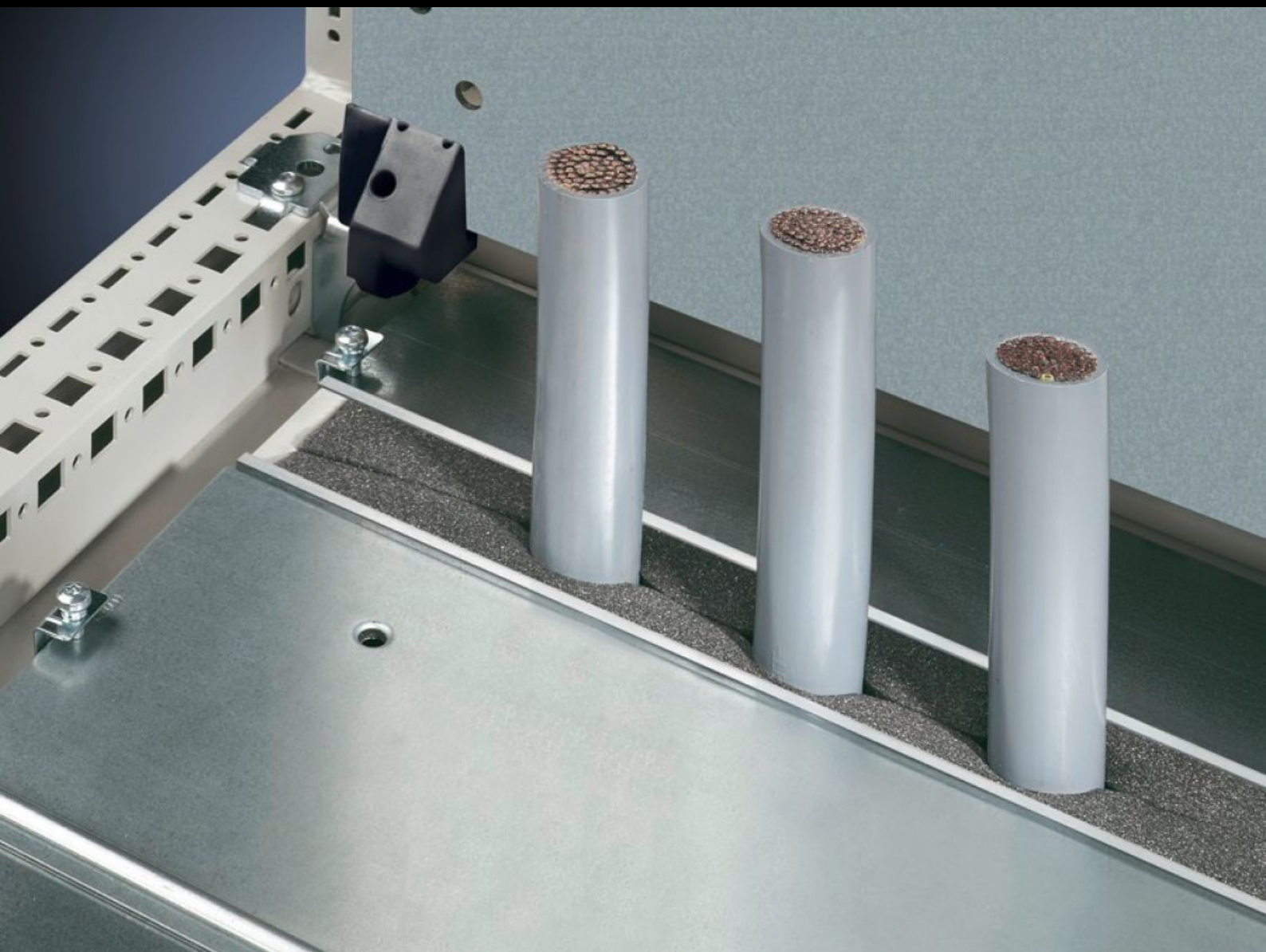


Rittal – The System.

Faster – better – everywhere.



TS 8802.080

Section for cable entry, centre

State: 12/07/2025 (Source: rittal.com/sg-en)

ENCLOSURES

POWER DISTRIBUTION

CLIMATE CONTROL

IT INFRASTRUCTURE

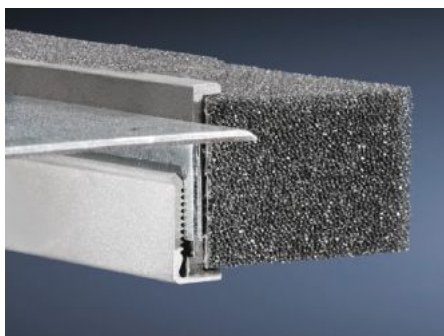
SOFTWARE & SERVICES

FRIEDHELM LOH GROUP



TS 8802.080 - Section for cable entry, centre for TS, TP

For top-mounting on gland plates.



Features

Model No.	TS 8802.080
Product description	For sealing the cable entry between the gland plates.
Benefits	Particularly well-suited to cables with identical cross-sections
Technical specifications	Foam rubber cable clamp strip: Cross-section: 30 x 25 mm
Applications	For top-mounting on gland plates.
Material	Extruded aluminium section Foam rubber cable clamp strip: PU foam
Supply includes	Plug-in sections, incl. foam rubber clamp strip
Note	2 pc(s). are sufficient for one base opening up to an enclosure width of 800 mm From an enclosure width of 1000 mm, two base openings are provided. 4 packs per enclosure may be fitted
To fit	Enclosure type: TS: = 800 mm Enclosure type: TP
IP protection category to IEC 60529	IP 55 if installed correctly
Packs of	2 pc(s).
Net weight	0.3
Gross weight	0.32
Customs tariff number	76042990

Features

EAN	4028177382497
ETIM 9	EC000211
ECLASS 8.0	27142421