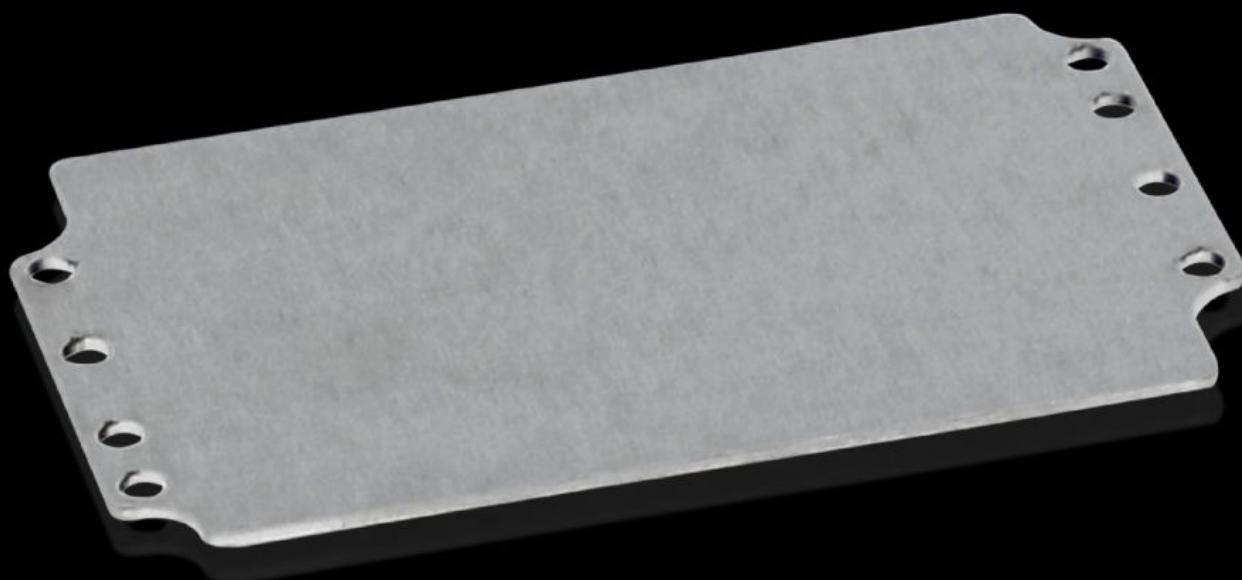


Rittal – The System.

Faster – better – everywhere.



GA 9105.700 Mounting plate

State: 04/08/2025 (Source: [rittal.com/sg-en](https://www.rittal.com/sg-en))

ENCLOSURES

POWER DISTRIBUTION

CLIMATE CONTROL

IT INFRASTRUCTURE

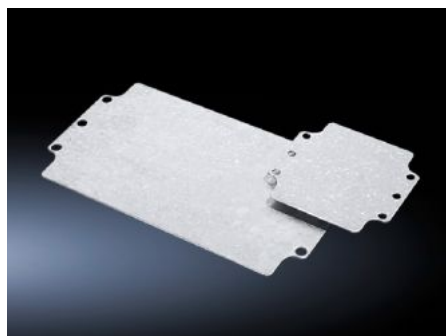
SOFTWARE & SERVICES

FRIEDHELM LOH GROUP



GA 9105.700 - Mounting plate for GA

For individual interior installation, with mounting holes.



Features

Model No.	GA 9105.700
Product description	For universal interior installation, with mounting holes.
Material	Sheet steel
Surface finish	Zinc-plated
Dimensions mounting plate (W x H)	114 mm x 69 mm
To fit	Enclosure type: GA Width: = 125 mm Height: = 80 mm
Packs of	10 pc(s).
Net weight	0.8
Gross weight	0.859
PCF per pack (cradle-to-gate)	3.3 kg CO2 eq (Cat B)
Note on PCF category	Category B: PCF value (cradle-to-gate) based on the product weight, approximately calculated and self-declared
Customs tariff number	73269098
EAN	4028177154261
ETIM 9	EC000213
ECLASS 8.0	27409216