

Rittal – The System.

Faster – better – everywhere.



AX 9204.100 Ex enclosures

State: 15/05/2026 (Source: rittal.com/sg-en)

ENCLOSURES

POWER DISTRIBUTION

CLIMATE CONTROL

IT INFRASTRUCTURE

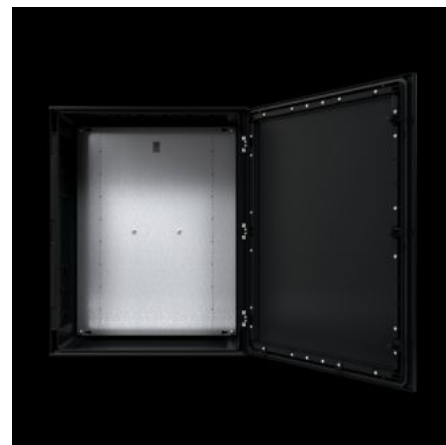
SOFTWARE & SERVICES

FRIEDHELM LOH GROUP



AX 9204.100 - Ex enclosures AX plastic, empty enclosure with hinged door

Ex enclosures with hinged door, plastic



Features

Model No.	AX 9204.100
Design	Ex enclosures
Applications	Zone 1 and 2 or 21 and 22 to 2014/34/EC Ambient temperature range: -40 °C...+70 °C The specified temperatures may be limited by the installed equipment Explosion protection category to EN 60 079: Equipment protection thanks to increased safety (Ex e), equipment protection thanks to enclosure (Ex tb)
Material	Fibre-glass-reinforced unsaturated polyester, surface resistance: < 10 ⁹ Ω Door: Fibreglass-reinforced unsaturated polyester, surface resistance: < 10 ⁹ Ω, bonded all-round silicone seal Mounting plate: Sheet steel, zinc-plated
Colour	RAL 9011
Supply includes	Enclosure Door Mounting plate

Features

Dimensions	Width: 400 mm Height: 400 mm Depth: 200 mm
Dimensions mounting plate (W x H)	305 mm x 325 mm
Material thickness of mounting plate	2.5 mm
Certificate IEC EX PTB 10.0011U	Yes
Certificate PTB 03 ATEX 1011U	Yes
Lock	Number of locks: 2
IP protection category to IEC 60529	IP 65
Protection category NEMA	Type 1 Type 3R Type 3RX Type 4 Type 4X Type 12
IK Code	IK09
Operating temperature range	-40 °C...70 °C
Operating temperature	The specified temperatures may be limited by the installed equipment
Packs of	1 pc(s).
Net weight	8.7 kg
Gross weight	8.9 kg
Customs tariff number	94037000
ETIM 9	EC002503
ECLASS 8.0	27180502
Product description	AX Ex enclosure, WHD: 400x400x200 mm, fibreglass-reinforced unsaturated polyester, with mounting plate, empty enclosure with hinged door

Approvals

Approvals	ATEX ATEX QA IECEX IECEX QAR UR + C-UR (recognized)
Explanations	Attestation of Conformity

Tender text

Ex-Enclosure Plastic AX

Enclosure with door:

Empty enclosure with hinged door, 3 mm double-bit insert.

EX approved for zones 1 and 2 resp.

21 and 22 according to 2014/34/EU

Insulated enclosure, class II according to VDE 100, part 410

Body made of one piece of impact-resistant, glass-fibre-reinforced and unsaturated polyester, self-extinguishing according to UL 94 V-0.

Temperature resistant between -40°C and +70° C

Double sealing at the top and bottom edge of the door as rain protection strip.

Body encapsulated and provided with numerous mounting lugs for interior fittings.

Doors with circumferential glued-in silicone seal, circumferential door reinforcement frame with mounting lugs for interior fittings.

Door with 130° hinge in stainless steel, door opening angle 130°, door hinge can be changed from left to right.

Integrated runners on the upper- and underside of the door.

Mounting plate:

with keyhole for earthing

QR code:

Printed QR code on body, mounting plate, door and type plate for clear identification and easy retrieval of relevant product information and documentation as well as unambiguous traceability

of the individual parts.

Accessories:

Locking inserts, universal brackets, system punched-sections

Wall mounting brackets for AX plastic RAL 9011, door stay,

wiring plan pockets, screws for interior fittings.

Material:

Enclosure: fibreglass reinforced unsaturated polyester,

Surface resistance: $< 10^9 \Omega$

Door: fibreglass reinforced unsaturated polyester,

surface resistance: $< 10^9 \Omega$ all-round,

foamed-in silicone seal

Mounting plate: sheet steel, galvanised

Material thicknesses:

Enclosure and door: 3 mm

Mounting plate: 2.5 mm

Colour: RAL 9011

Approvals and protection classes:

UL23 ATEX 2986U

IECEX 23.0024U

UL HazLoc

Explosion protection category to EN 60 079:

Equipment protection thanks to increased safety (Ex e),

equipment protection thanks to enclosure (Ex tb)

Protection class acc. to IEC 62 208: IP 65

Type rating to UL 50E: Type 1, 3R, 3RX, 4, 4X, 12

Impact protection to IEC 62 262: IK 09

Enclosure approved to UL 508A

Protective insulation, class II at 1000 V AC

Part No.: 9204.100

Manufacturer: Rittal GmbH & Co. KG

Mounting Plate Dimension (W x H): 305x325 mm

Enclosure Dimensions (W x H x D): 400x400x200 mm