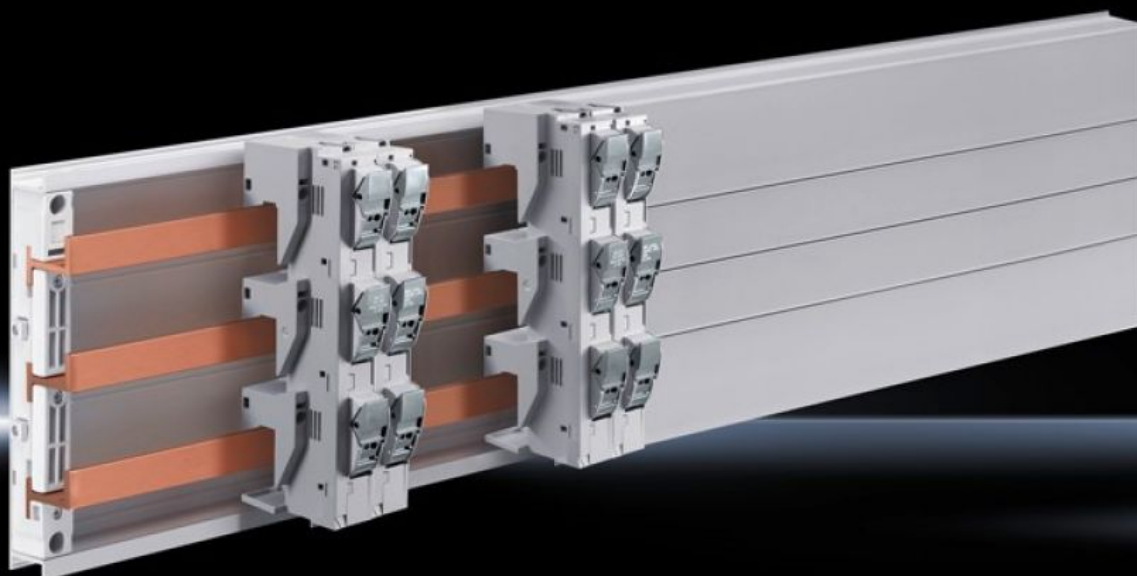


Rittal – The System.

Faster – better – everywhere.



SV 9345.040 Fuse holders

State: 04/04/2026 (Source: rittal.com/sg-en)

ENCLOSURES

POWER DISTRIBUTION

CLIMATE CONTROL

IT INFRASTRUCTURE

SOFTWARE & SERVICES

FRIEDHELM LOH GROUP



SV 9345.040 - Fuse holders 30 A

3-pole, for busbar systems with 60 mm bar centre distance.

Features

Model No.	SV 9345.040
Design	For category CC fuse type
Material	Polyamide Fire protection corresponding to UL 94-V0
Colour	RAL 7035
Connection for round conductor	AWG 10 - 16
For bar systems with centre-to-centre spacing	60 mm
Type of electrical connection	Box terminal
For fuse type (class)	CC
Rated operating current max.	30 A
Rated operating voltage	600 V, 3~
Fuse standard	UL 248-4
Note	Not suitable for accommodating fuses 10 x 38 mm to IEC 60269-2/-4/-6
Test specification	UL 4248-4
Dimensions	Width: 27 mm Height: 200 mm
Connection of round conductors	1.5 - 6 mm ²
To fit fuses	Diameter: 10 mm Length: 38 mm
To fit busbars	Height: 5, 10 mm
Voltage range for indicator lights	110 - 600 V
Electrical ratings UL (SCCR)	200 kA - 600 V, Fuse Class CC max. 30 A, JDDZ/7

Features

Number of poles	3-pole
Round conductor cross-section	1.5 - 6 mm ²
Packs of	4 pc(s).
Net weight	0.4 kg
Gross weight	0.84 kg
Copper weight (kg per piece)	0.032
Customs tariff number	85369095
ETIM 9	EC001644
ECLASS 8.0	27400613
Product description	SV Fuse holder, Class CC, 30 A, 600 V, 3-pole, (60 mm)

Approvals

Approvals	UL + C-UL (listed)
Explanations	Declaration of conformity UK