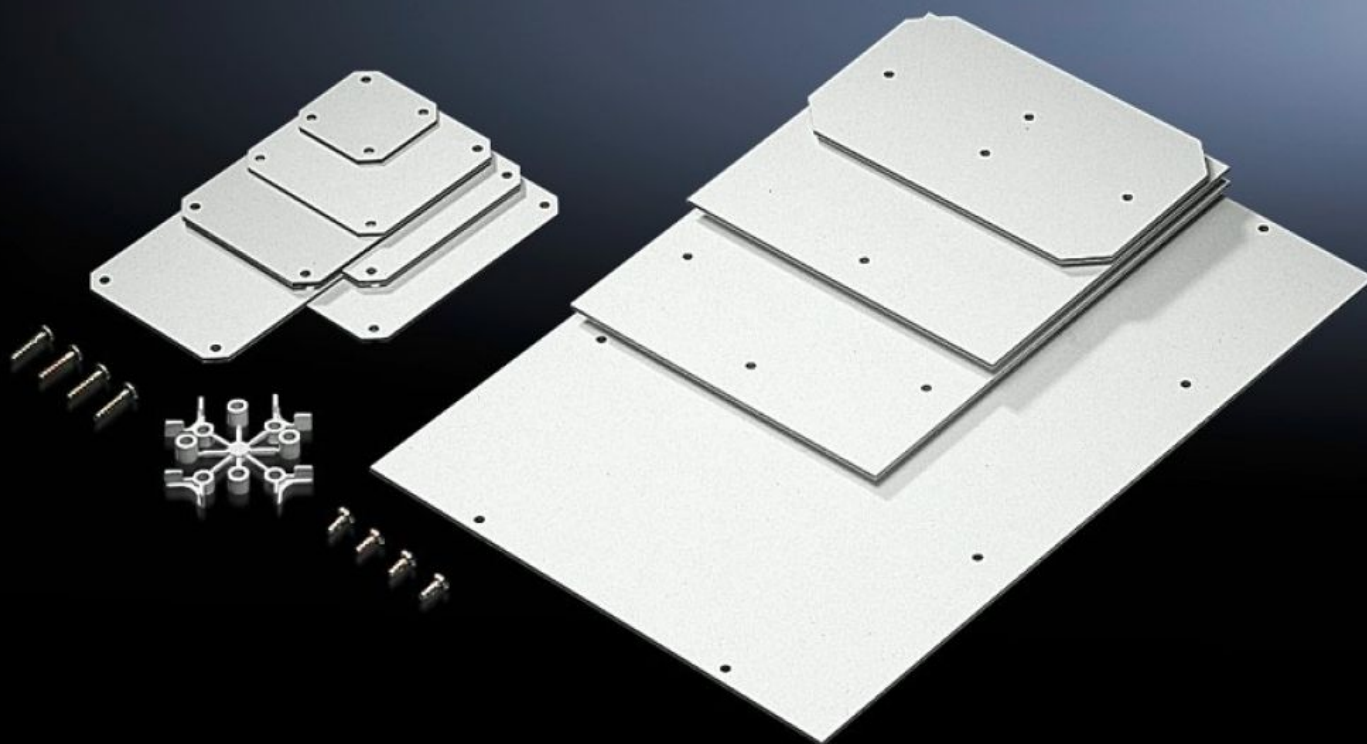


Rittal – The System.

Faster – better – everywhere.



PK 9548.000 Mounting plate

State: 11/09/2025 (Source: rittal.com/sg-en)

ENCLOSURES

POWER DISTRIBUTION

CLIMATE CONTROL

IT INFRASTRUCTURE

SOFTWARE & SERVICES

FRIEDHELM LOH GROUP



PK 9548.000 - Mounting plate for PK

For individual interior installation.



Features

Model No.	PK 9548.000
Product description	For individual interior installation.
Material	2.5 mm melamine phenol-coated laminated paper
Colour	RAL 7035
Supply includes	Mounting plate Self-tapping assembly screws
Dimensions mounting plate (W x H)	150 mm x 150 mm
To fit	Enclosure type: PK Width: = 182 mm Height: = 180 mm
Packs of	10 pc(s).
Net weight	0.91
Gross weight	1.07
Customs tariff number	39269097
EAN	4028177140097
ETIM 9	EC000213
ECLASS 8.0	27409216