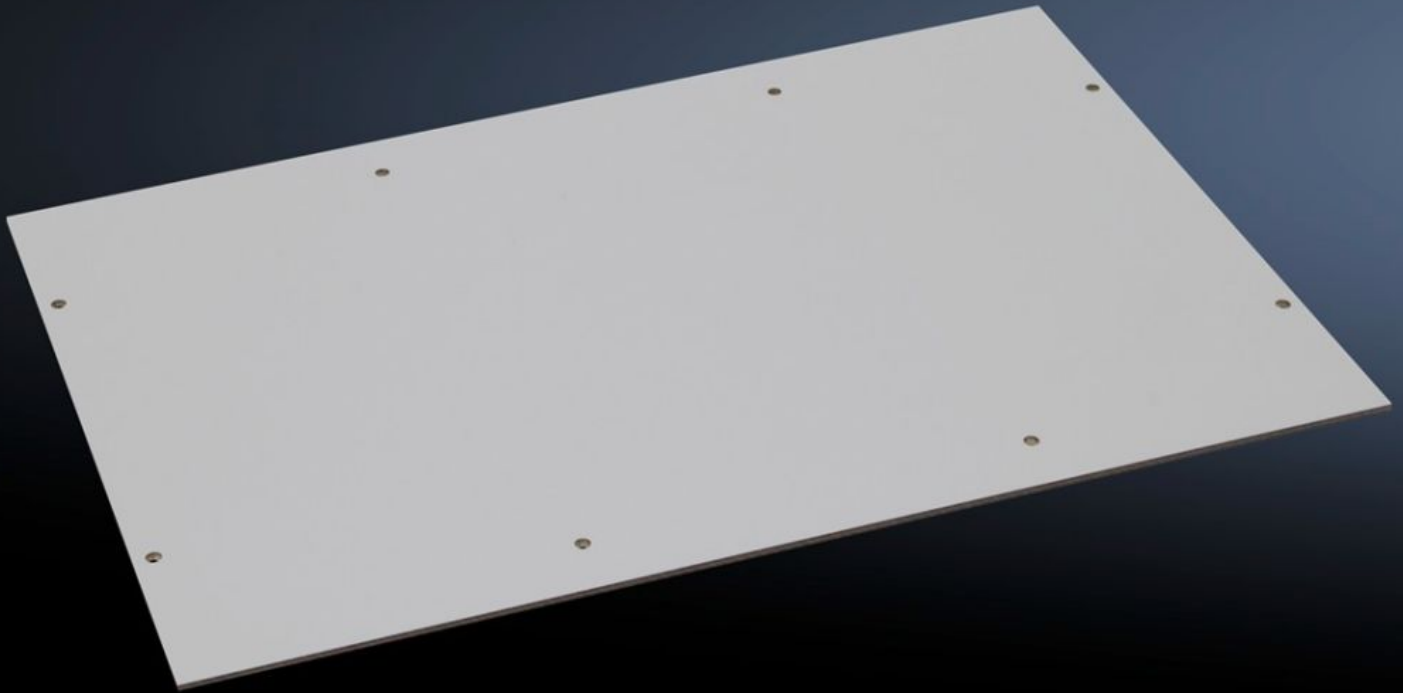


Rittal – The System.

Faster – better – everywhere.



PK 9550.000 Mounting plate

State: 23/05/2026 (Source: rittal.com/sg-en)

ENCLOSURES

POWER DISTRIBUTION

CLIMATE CONTROL

IT INFRASTRUCTURE

SOFTWARE & SERVICES

FRIEDHELM LOH GROUP



PK 9550.000 - Mounting plate for PK

For individual interior installation.



Features

Model No.	PK 9550.000
Product description	For individual interior installation.
Material	2.5 mm melamine phenol-coated laminated paper
Colour	RAL 7035
Supply includes	Mounting plate Self-tapping assembly screws
Dimensions mounting plate (W x H)	331 mm x 220 mm
To fit	Enclosure type: PK Width: = 360 mm Height: = 254 mm
Packs of	4 pc(s).
Net weight	1.2 kg
Gross weight	1.251 kg
Customs tariff number	39269097
ETIM 9	EC000213
ECLASS 8.0	27409216
Product description	PK Mounting plate, WH: 331x220 mm