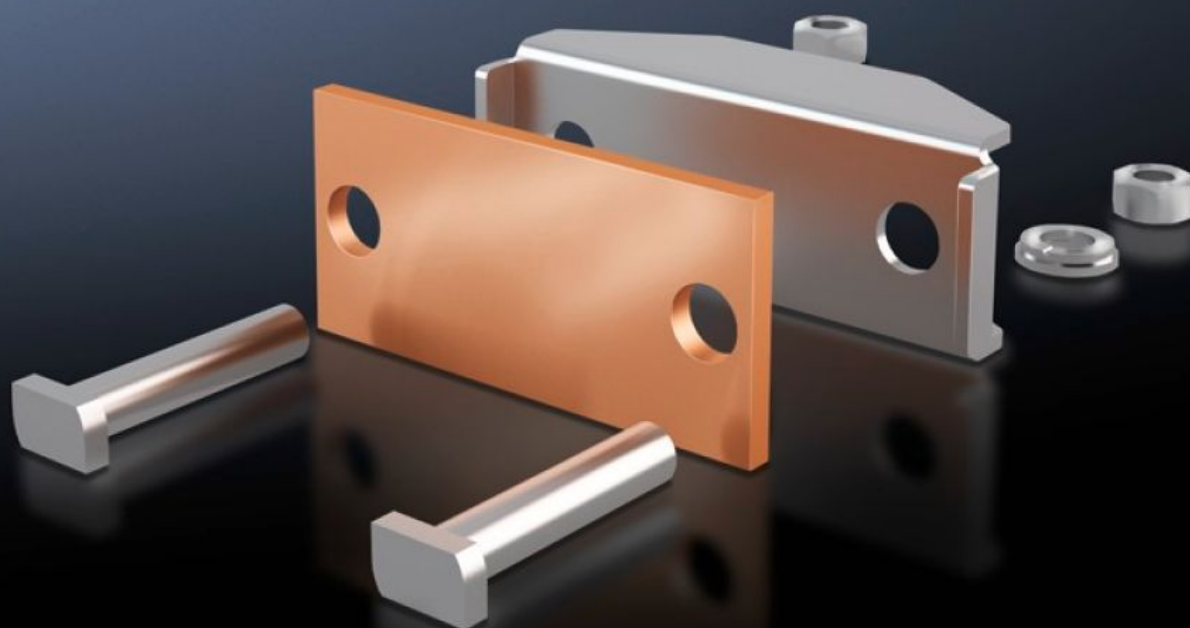


Rittal – The System.

Faster – better – everywhere.



SV 9650.340 Connection plate

State: 18/08/2025 (Source: rittal.com/sg-en)

ENCLOSURES

POWER DISTRIBUTION

CLIMATE CONTROL

IT INFRASTRUCTURE

SOFTWARE & SERVICES

FRIEDHELM LOH GROUP



SV 9650.340 - Connection plate for laminated copper bars

For the connection of laminated flat copper bars.

Features

Model No.	SV 9650.340
Product description	For the connection of laminated flat copper bars.
Material	Connection plate: E-Cu Thrust piece: Stainless steel
Supply includes	Assembly parts
To fit busbars	Maxi-PLS 60
Clamping area for laminated copper bars (W x H)	63 x 20 mm
Packs of	3 pc(s).
Net weight	1.434
Gross weight	1.653
Copper weight (kg per piece)	0.19
Customs tariff number	73269098
EAN	4028177239524
ETIM 9	EC002498
ECLASS 8.0	27379201

Approvals

Approvals	UL + C-UL (listed)
Explanations	Declaration of conformity Declaration of conformity UK