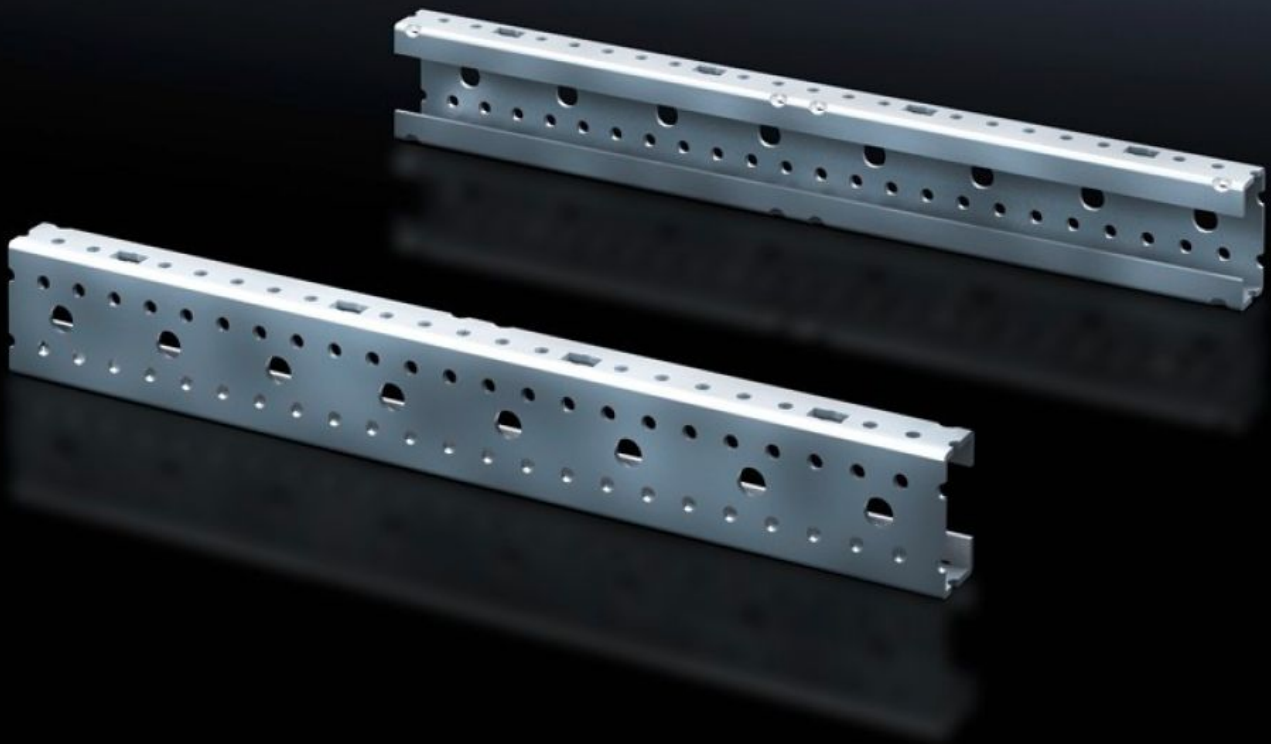


**Rittal – The System.**

Faster – better – everywhere.



# SV 9666.702

## Mounting angles ISV

State: 07/05/2026 (Source: [rittal.com/sg-en](http://rittal.com/sg-en))

ENCLOSURES

POWER DISTRIBUTION

CLIMATE CONTROL

IT INFRASTRUCTURE

SOFTWARE & SERVICES

FRIEDHELM LOH GROUP



# SV 9666.702 - Mounting angles ISV for VX

For vertical sub-division of the support frame in the VX/TS/SE enclosure.

## Features

Model No.	SV 9666.702
Product description	For vertical sub-division of the support frame in the enclosure.
Material	Sheet steel
Surface finish	Zinc-plated
Dimensions	Height: 300 mm
Size	Height units (U) @ 150 mm: 2
Packs of	2 pc(s).
Net weight	0.7 kg
Gross weight	0.703 kg
PCF per pack (cradle-to-gate)	2.7 kg CO2 eq (Cat B)
Note on PCF category	Category B: PCF value (cradle-to-gate) based on the product weight, approximately calculated and self-declared
Customs tariff number	39269097
ETIM 9	EC002270
ECLASS 8.0	27400613
Product description	SV Mounting angle (ISV), 2 U (300 mm), for TS, SE