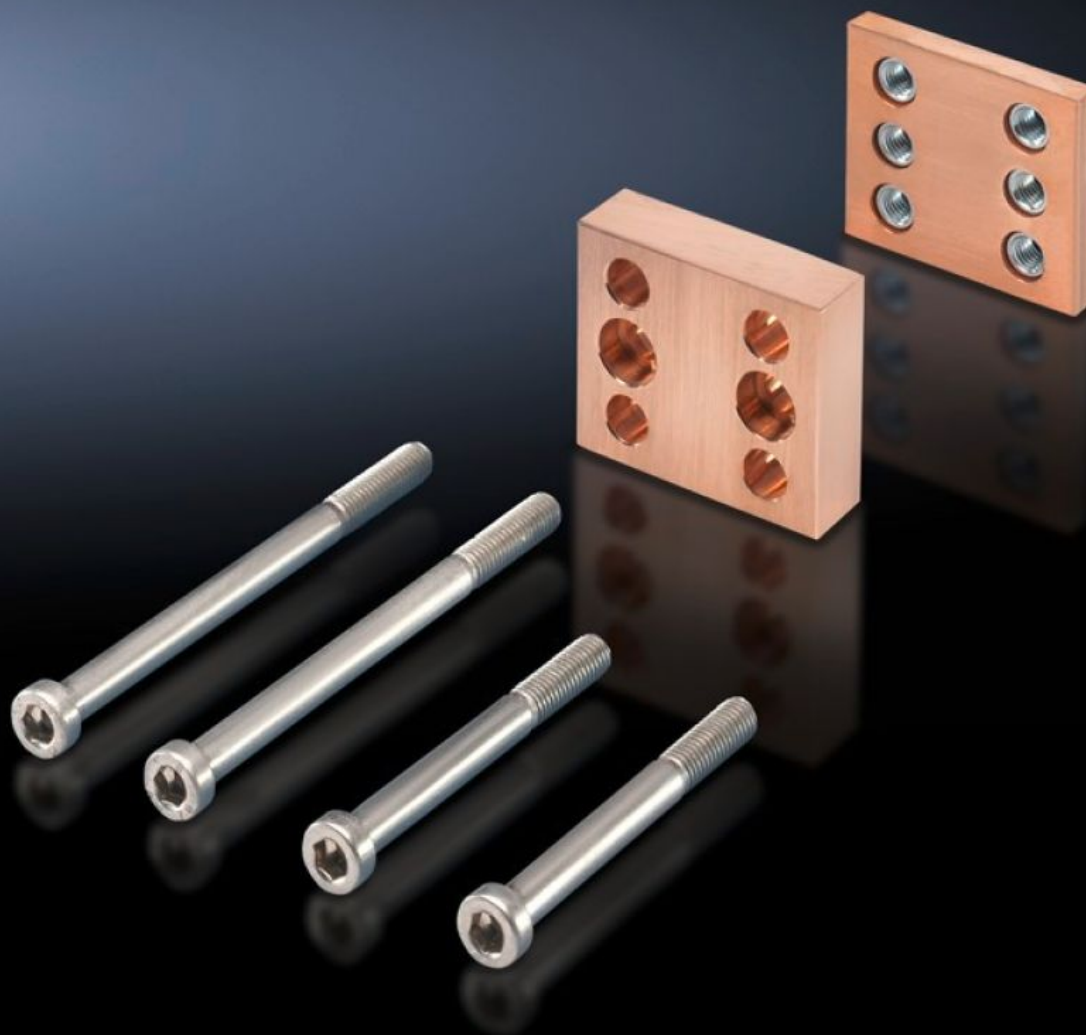


Rittal – The System.

Faster – better – everywhere.



SV 9676.540 Contact piece

State: 02/06/2025 (Source: [rittal.com/sg-en](https://www.rittal.com/sg-en))

ENCLOSURES

POWER DISTRIBUTION

CLIMATE CONTROL

IT INFRASTRUCTURE

SOFTWARE & SERVICES

FRIEDHELM LOH GROUP



SV 9676.540 - Contact piece for connection brackets

For connecting connection brackets and connector kits of flat copper bars to Flat-PLS busbar systems, no drilling required.



Features

| | |
|------------------------------|---|
| Model No. | SV 9676.540 |
| Product description | For joining connection brackets to busbar systems. |
| Material | E-Cu |
| Supply includes | Assembly parts |
| For Busbar width | 100 mm |
| Number of bars per conductor | 3 4 |
| Note | <p>The screws included with the supply are used to secure the contact pieces to the busbars</p> <p>Screws for attaching the connection brackets are not included with the supply</p> <p>The required screw length must be selected in line with the busbar width W, i.e. $\text{length} = W + \text{fastening measurement} + (\text{number of sub-conductors} \times 10)$</p> <p>No. of screws per bracket: With 2 sub-conductors per conductor: 2 pc(s). and with 3 or 4 sub-conductors per conductor: 4 pc(s).</p> |
| To fit busbar system | Flat-PLS |
| Mounting dimensions | 40 mm |
| Packs of | 1 pc(s). |
| Net weight | 2 |

Features

| | |
|------------------------------|---------------|
| Gross weight | 2.018 |
| Copper weight (kg per piece) | 1.75 |
| Customs tariff number | 74198090 |
| EAN | 4028177602762 |
| ETIM 9 | EC001900 |
| ECLASS 8.0 | 27400613 |

Approvals

| | |
|--------------|---|
| Explanations | Declaration of conformity Declaration of conformity UK |
|--------------|---|