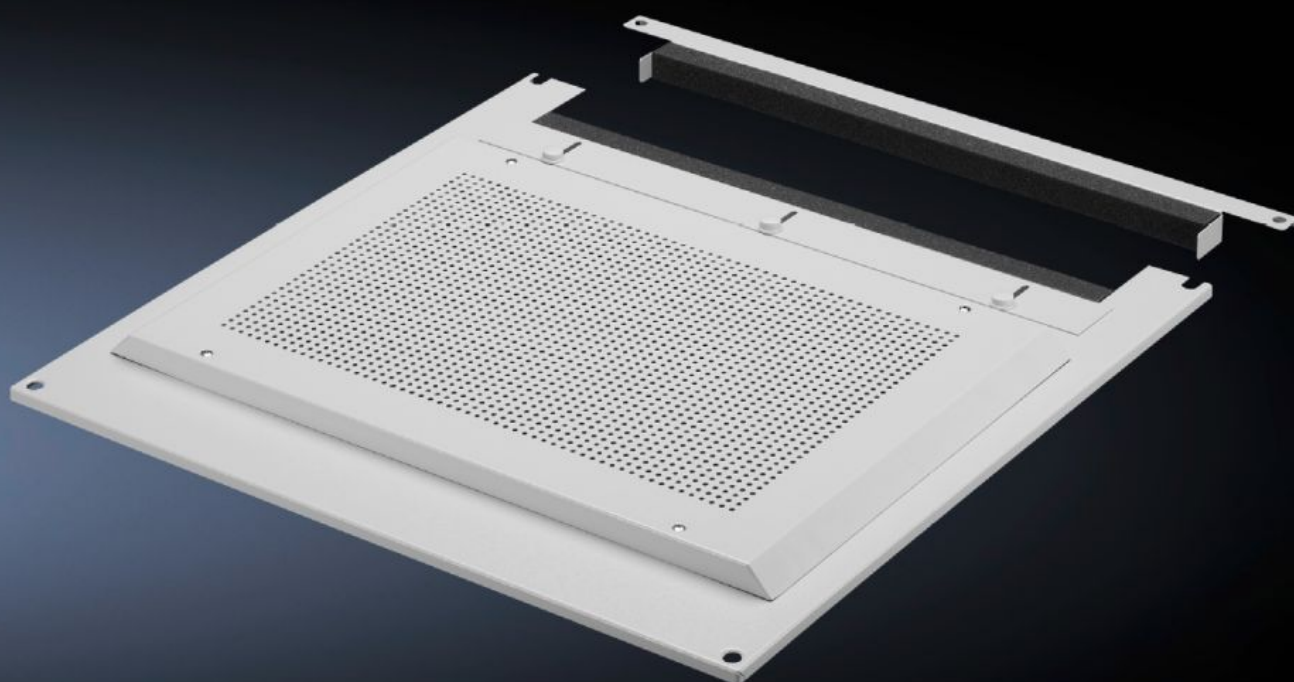


Rittal – The System.

Faster – better – everywhere.



DK 2102.320

Fan insert

State: 15.7.2025 (Source: [rittal.com/si-sl](https://www.rittal.com/si-sl))

ENCLOSURES

POWER DISTRIBUTION

CLIMATE CONTROL

IT INFRASTRUCTURE

SOFTWARE & SERVICES

FRIEDHELM LOH GROUP



DK 2102.320 - Fan insert for fan roof, modular, two-piece

Modular fan inserts for fan roof, for active cooling.

Features

Model No.	DK 2102.320
Product description	For active ventilation: A fully pre-wired fan tray including 2.5 m connection cable, with two fan motors and additional cut-outs. The air throughput may be increased with a fan expansion kit.
Material	Sheet steel
Colour	RAL 7035
Air throughput of fans (unimpeded air flow)	1514
Air throughput per fan (unimpeded air flow)	160/180
To fit	Width: < 600 mm Depth: < 600 mm
Operating temperature range	-10 °C...55 °C
Packs of	1 pc(s).
Net weight	3.14
Gross weight	3.34
Customs tariff number	84145915
EAN	4028177015067
ECLASS 8.0	27180716

Approvals

Explanations	Declaration of conformity
--------------	---------------------------

Tender text

Active fan insert for vent panel in FR(i) and TS

The fan insert can also be used to supplement the standard item fans with an active fan expansion kit.

Dimensions (W x D): 600 x 600 mm

Material: 1.5 mm sheet steel

Surface: Electrophoretic dipcoat primed, textured stove enamel, RAL 7035

Version: Fan cutouts: 2; Number of fans: 2

Rated operating voltage: 230V, 50/60 Hz; nominal power rating: 15/14 W at 50/60 Hz air throughput (unimpeded air flow) 160 - 180 m³/h at 50/60 Hz;

Temperature range: -10 °C to 55 °C