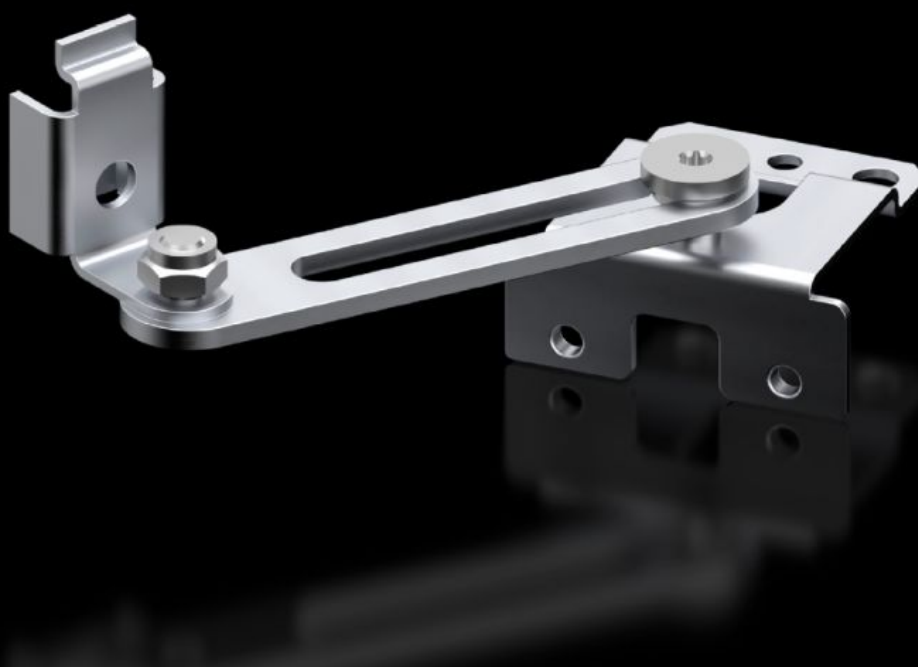


Rittal – The System.

Faster – better – everywhere.



AX 2519.010

Door stay

State: 25.6.2025 (Source: [rittal.com/si-sl](https://www.rittal.com/si-sl))

ENCLOSURES

POWER DISTRIBUTION

CLIMATE CONTROL

IT INFRASTRUCTURE

SOFTWARE & SERVICES

FRIEDHELM LOH GROUP



AX 2519.010 - Door stay for AX

To secure the door in the open position. May be fitted without machining the enclosure.

Features

Model No.	AX 2519.010
Product description	To secure the door in the open position. May be fitted without machining the enclosure.
Material	Sheet steel
Surface finish	Zinc-plated
Supply includes	Assembly parts
Assembly instruction	For installation in AX sheet steel only in combination with the AX interior installation rail (2393.XXX)
To fit enclosure type	AX sheet steel
Packs of	1 pc(s).
Net weight	0.076
Gross weight	0.086
Customs tariff number	83024900
EAN	4028177938335
ETIM 9	EC002626
ETIM 8	EC002626
ECLASS 8.0	27189234