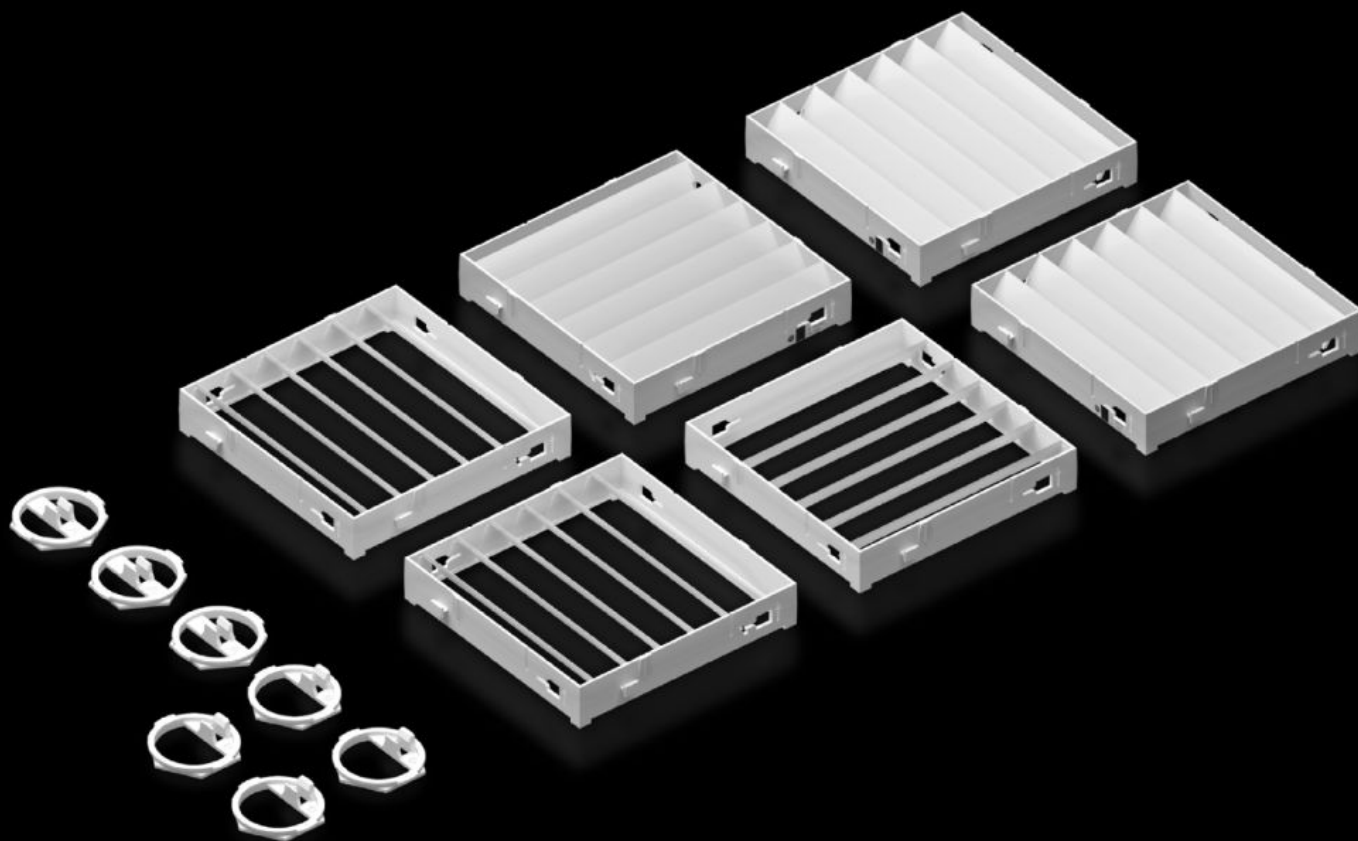


# Rittal – The System.

Faster – better – everywhere.



## SK 3213.350

### Air diverter

State: 8.9.2025 (Source: [rittal.com/si-sl](https://www.rittal.com/si-sl))

ENCLOSURES

POWER DISTRIBUTION

CLIMATE CONTROL

IT INFRASTRUCTURE

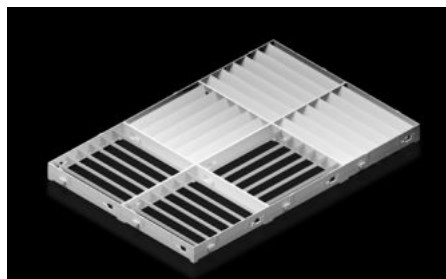
SOFTWARE & SERVICES

FRIEDHELM LOH GROUP



# SK 3213.350 - Air diverter

Targeted routing of the cold air flow to avoid hot spots in the enclosure. Particularly well-suited for densely-packed electrical components in the enclosure.



## Features

Model No.	SK 3213.350
Product description	For use with wall-mounted cooling units, for targeted routing of cold air in a downward direction. Particularly well-suited for densely-packed electrical components in the lower section of the enclosure.
Benefits	Individual modification of air outlet direction Simple, tool-free assembly Quickly retrofitted (no drilling required) Minimum installation depth
Material	ABS Fire protection corresponding to UL 94-V0
Colour	RAL 7035
To fit	Wall-mounted cooling unit Blue e+
Note on Model No.	Not suitable for wall-mounted cooling unit Blue e+ Outdoor
To fit Model No.	3188.94x 3188.640 3189.94x 3189.640
Dimensions	Width: 330 mm Height: 495 mm Depth: 30 mm
Packs of	1 pc(s).

# Features

Net weight	0.8
Gross weight	0.87
Customs tariff number	39269097
EAN	4028177976283
ETIM 9	EC011604
ETIM 8	EC011604
ECLASS 8.0	22410601