

Rittal – The System.

Faster – better – everywhere.



SK 3239.400 Blue e+ outlet filter

State: 11.4.2026 (Source: rittal.com/si-sl)

ENCLOSURES

POWER DISTRIBUTION

CLIMATE CONTROL

IT INFRASTRUCTURE

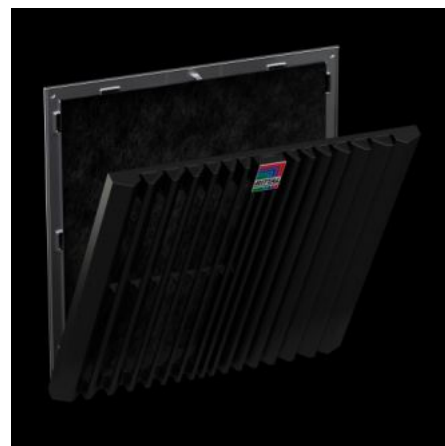
SOFTWARE & SERVICES

FRIEDHELM LOH GROUP



SK 3239.400 - Blue e+ outlet filter EMC

The outlet filter is used in conjunction with the corresponding fan-and-filter unit to dissipate heat loss from enclosures, ventilate the enclosure and protect temperature-sensitive components. This is achieved through the direct infeed of ambient air, the temperature of which must be lower than the permissible internal temperature of the enclosure.



Features

Model No.	SK 3239.400
Design	wall-mounted EMC
Benefits	Easy filter changes, thanks to a new opening mechanism on the louvred grille Faster installation on the enclosure with optimised detent hooks Tool-free assembly
Colour	RAL 7035
Supply includes	Outlet filter EMC filter mat
Mounting cut-out	Cut-out width: 177 mm Cut-out height: 177 mm
To fit Model No.	SK 3239.8xx
Dimensions	Width: 204 mm Height: 204 mm Depth: 45.8 mm

Features

Protection category NEMA	Type 12 with chopped-fibre filter Type 3, 3R, 4, 4X with chopped-fibre filter and hose-proof hood
IP protection category to IEC 60529	IP 54 with chopped-fibre filter IP 56 with chopped-fibre filter and hose-proof hood
Packs of	1 pc(s).
Net weight	0,3 kg
Gross weight	0,473 kg
Customs tariff number	39269097
ETIM 9	EC002513
ETIM 8	EC002513
ECLASS 8.0	27180706
Product description	SK Blue e+ outlet filter, for fan-and-filter unit 3239.8xx, WxH 204 x 204 mm, RAL 7035

Approvals

Approvals	UL + C-UL - FTTA UR + C-UR (recognized)
-----------	--