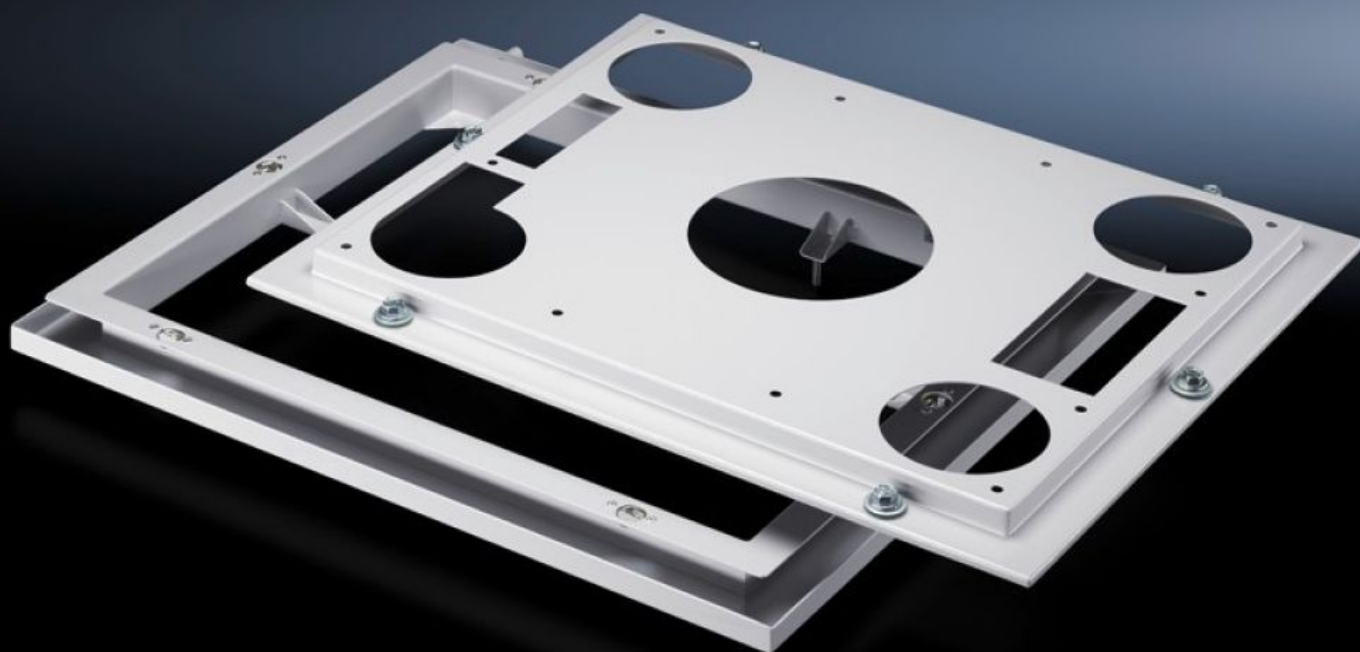


Rittal – The System.

Faster – better – everywhere.



SK 3286.900 Quick-change frame

State: 15.7.2025 (Source: [rittal.com/si-sl](https://www.rittal.com/si-sl))

ENCLOSURES

POWER DISTRIBUTION

CLIMATE CONTROL

IT INFRASTRUCTURE

SOFTWARE & SERVICES

FRIEDHELM LOH GROUP



SK 3286.900 - Quick-change frame for roof-mounted cooling units

Together with the seal, the lower part of the alternate frame is screw-fastened to the enclosure. In this way, it is possible to install and remove the connector-ready cooling unit with quick-release fasteners with the upper part of the alternate frame pre-fitted on the cooling unit.

Features

Model No.	SK 3286.900
Product description	The quick-change frame is more than just an alternate frame. Together with the seal, the lower part of the frame is screw-fastened to the enclosure. In this way, it is possible to install and remove the connector-ready cooling unit with the upper part of the alternate frame previously mounted on the cooling unit with quick-release fasteners. During servicing work, this means shorter assembly times and hence minimised downtime. What is more, the quick-change frame offers effective protection against the ingress of oil into the enclosure in oily atmospheres, thanks to its integral drainage trough.
Material	Sheet steel
Colour	RAL 7035
Supply includes	Quick-change frame Seal Quick-release fasteners
To fit Model No.	3386.... 3387....
Packs of	1 pc(s).
Net weight	10.419
Gross weight	10.967
PCF per pack (cradle-to-gate)	38.5 kg CO2 eq (Cat B)
Note on PCF category	Category B: PCF value (cradle-to-gate) based on the product weight, approximately calculated and self-declared

Features

Customs tariff number	73269098
EAN	4028177325425
ETIM 9	EC000331
ETIM 8	EC000331
ECLASS 8.0	27189272

Approvals

Certificates	EAC
--------------	-----