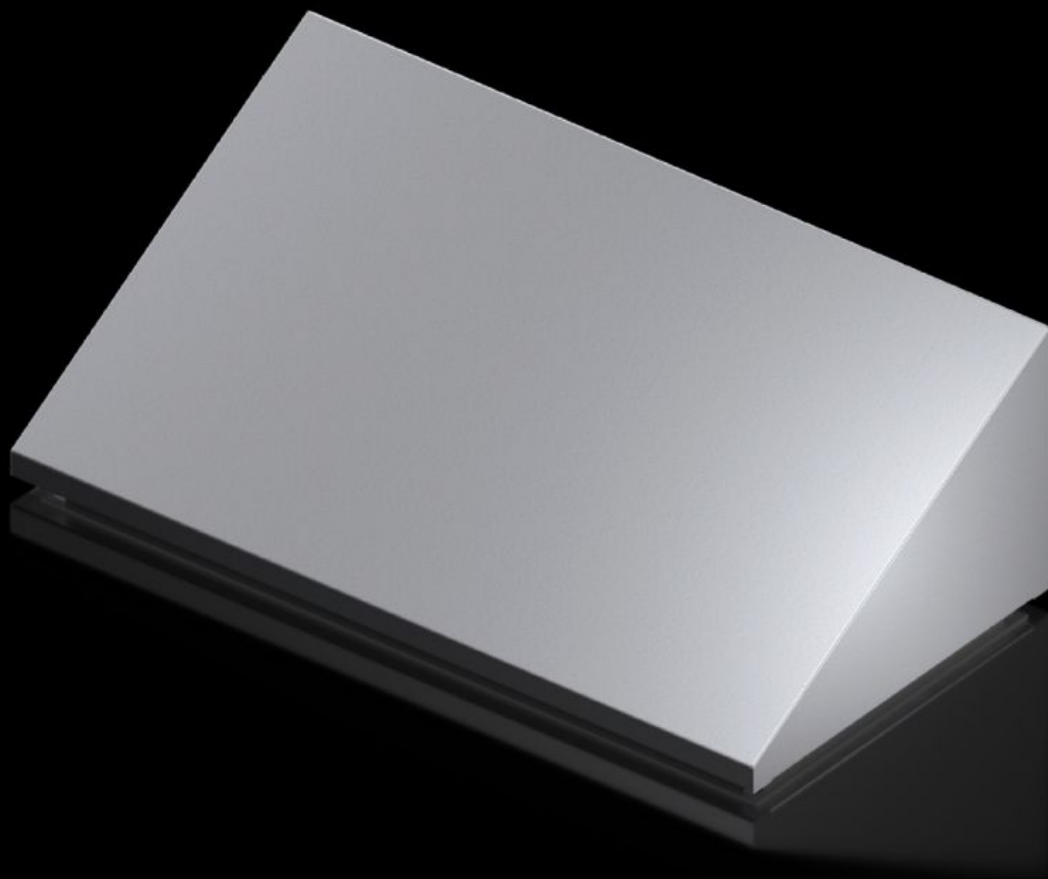


Rittal – The System.

Faster – better – everywhere.



SZ 4000.058

Attachable sloped roof

State: 1.8.2025 (Source: [rittal.com/si-sl](https://www.rittal.com/si-sl))

ENCLOSURES

POWER DISTRIBUTION

CLIMATE CONTROL

IT INFRASTRUCTURE

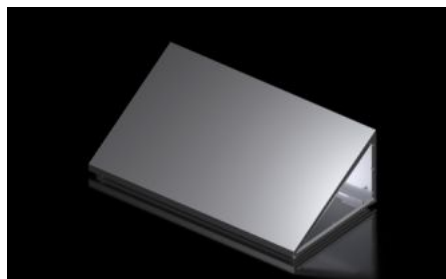
SOFTWARE & SERVICES

FRIEDHELM LOH GROUP



SZ 4000.058 - Attachable sloped roof for VX

For retrofitting individual or bayed VX25 enclosures made from spray-finished sheet steel, with the maximum possible opening to the adjacent roof at the baying point.



Features

Model No.	SZ 4000.058
Technical specifications	Roof projection, front: 8 mm
Material	Sheet steel
Surface finish	powder-coated
Colour	RAL 7035
Supply includes	Assembly parts and seals
Dimensions	Height, front: 35 mm
IP protection category to IEC 60529	IP 55
Protection category NEMA	NEMA 12
Note on Model No.	Please quote the complete design code on all enquiries and orders. Extended delivery times.

Features

Design code number	Roof tilt: 1 = 30° (EHEDG standard) or 2 = 45° Enclosure width: ... mm (max. 1200 mm) Enclosure depth: ... mm 1 = for VX free-standing enclosure 2 = for bayed VX end enclosure, left (with T-section seal and connection accessories) 3 = for bayed VX end enclosure, right (with T-section seal and connection accessories) 4 = for bayed VX enclosure, centre (with T-section seal and connection accessories) Example: 1 - 800 - 600 - 1 (sloped attachment with 30° roof pitch - width 800 mm - depth 600 mm - for VX free-standing enclosure)
Packs of	1 pc(s).
Net weight	2
Gross weight	2.1
EAN	4028177937130