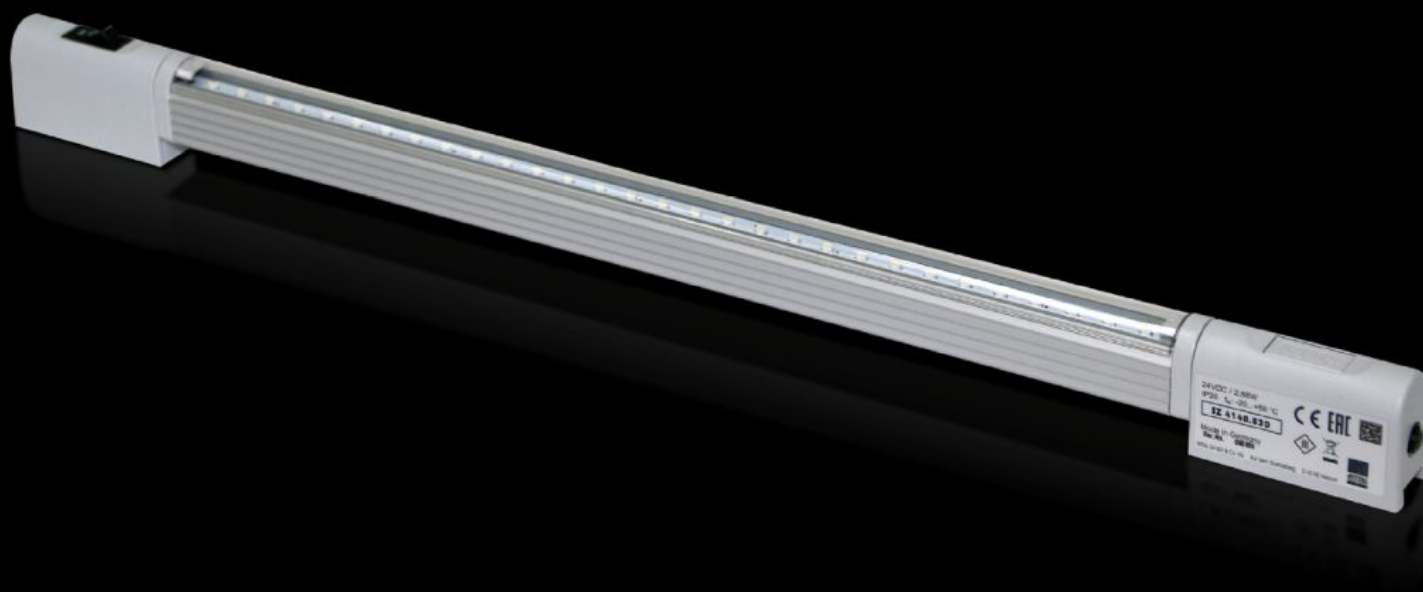


# Rittal – The System.

Faster – better – everywhere.



## SZ 4140.830

## LED compact system light

State: 15.8.2025 (Source: [rittal.com/si-sl](https://www.rittal.com/si-sl))

ENCLOSURES

POWER DISTRIBUTION

CLIMATE CONTROL

IT INFRASTRUCTURE

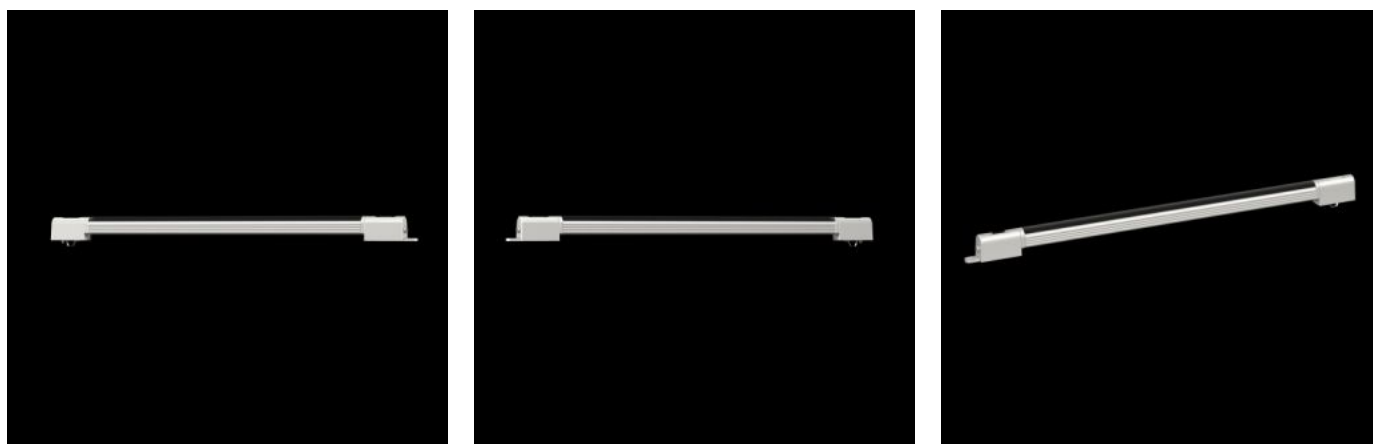
SOFTWARE & SERVICES

FRIEDHELM LOH GROUP



# SZ 4140.830 - LED compact system light

Supply voltage: 24 V DC



## Features

|                          |   |
|--------------------------|---|
| Model No.                | SZ 4140.830   |
| Benefits                 | Max. EMC capacity.<br>Safe, thanks to operation in the extra-low safety voltage range.<br>Economical energy use.<br>Low-maintenance thanks to the use of LEDs.<br>May be connected to a door-operated switch. |
| Function principle       | Integral through-wiring.<br>Universal attachment options.<br>Vertically hinged light cone   |
| Material                 | Light body: Extruded aluminium<br>Light cover: Polycarbonate (halogen-free)<br>Light ends: PC-ABS   |
| Colour                   | Similar to RAL 7035   |
| Supply includes          | LED compact system light<br>Light<br>Light cover<br>Assembly parts  |
| Mounting distance screws | 450 mm  |

# Features

|   |  |
|---|--|
| Connection options                              | Power supply via connectors<br>Door-operated switch<br>Through-wiring (creating rows of lights)  |
| Light   | LEDs, cold white   |
| Protection class                                | III (SELV)   |
| Switch (type)                                   | Integral on/off/door-operated switch   |
| Light cover                                     | Yes  |
| Light – installation type                       | Screw-fastening<br>Clip attachment<br>Magnetic attachment (accessory)  |
| Rated impulse withstand voltage, phase to earth | Depending on the power pack  |
| Rated impulse withstand voltage, phase to phase | Depending on the power pack  |
| Rated insulation voltage                        | Depending on the power pack  |
| Rated current max DC note                       | When configuring rows of lights, the maximum rated current is 2 amperes  |
| With DC   | 0,12 A   |
| Number of LEDs                                  | 30   |
| Mounting distance clip/magnet                   | 375 mm   |
| Installation options                            | Directly onto the enclosure section with 25 mm pitch pattern<br>Via mounting kit magnet<br>AE: with rail for interior installation   |
| Note  | Only intended for use in enclosures and sealed cases<br>When using on customer-supplied power packs, it is important to obtain the requisite approvals depending on the application<br>When configuring rows of lights, the maximum rated current is 2 amperes |
| Light cone adjustment                           | Yes  |
| Dimensions                                      | Width: 430 mm<br>Height: 32.8 mm<br>Depth: 20.64 mm  |

# Features

|                                     |               |
|-------------------------------------|---------------|
| Rated operating voltage             | 24 V (DC)     |
| IP protection category to IEC 60529 | IP 20         |
| Packs of                            | 1 pc(s).      |
| Net weight                          | 0.37          |
| Gross weight                        | 0.38          |
| Customs tariff number               | 94054990      |
| EAN                                 | 4028177630147 |
| E-Number Sweden                     | E4302507      |
| ETIM 9                              | EC000321      |
| ETIM 8                              | EC000321      |
| ECLASS 8.0                          | 27189241      |

# Approvals

|              |   |
|--------------|---|
| Explanations | Declaration of conformity<br>Declaration of conformity UK |
|--------------|---|