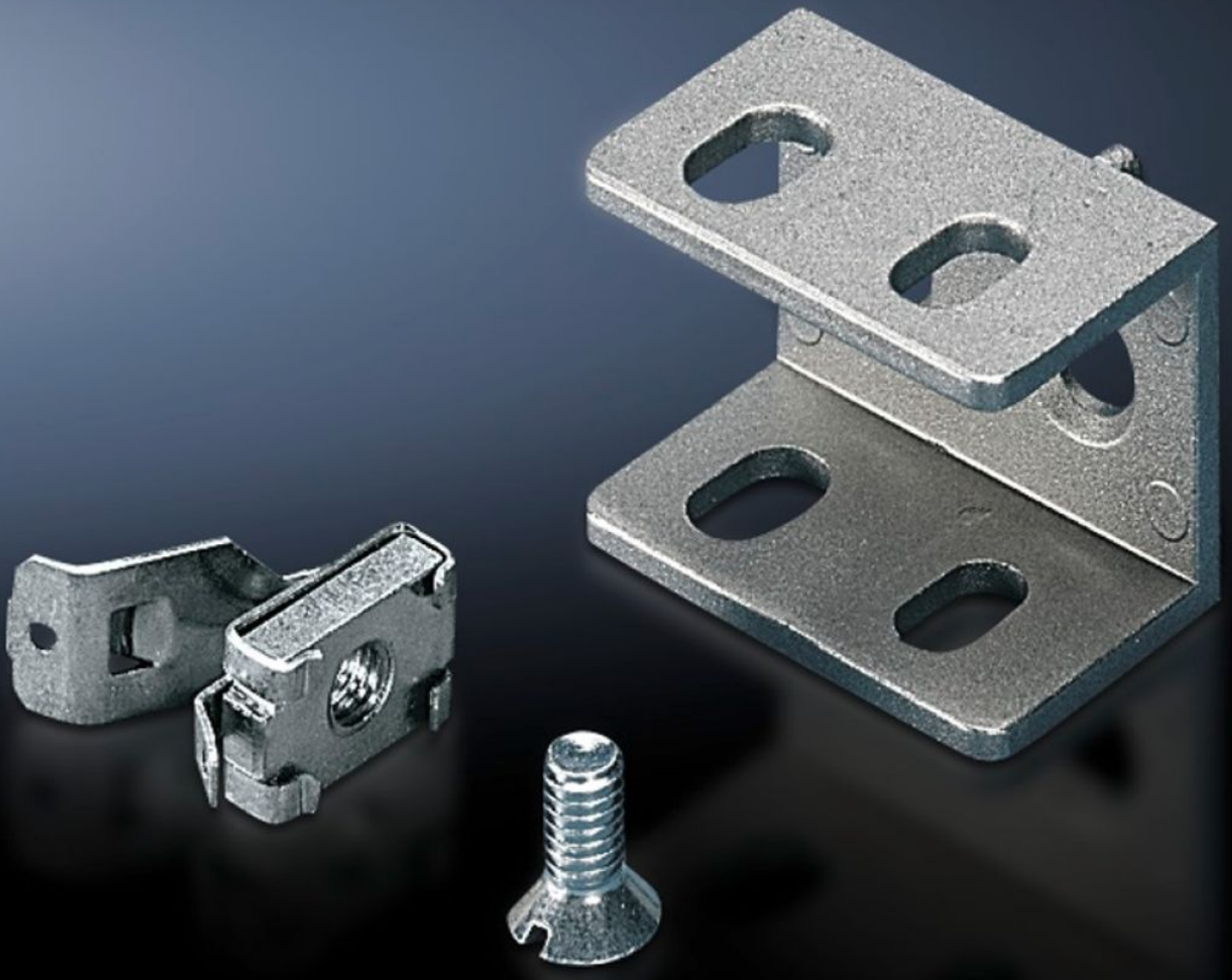


Rittal – The System.

Faster – better – everywhere.



SZ 4182.000

Mounting bracket PS

State: 15.4.2026 (Source: rittal.com/si-sl)

ENCLOSURES

POWER DISTRIBUTION

CLIMATE CONTROL

IT INFRASTRUCTURE

SOFTWARE & SERVICES

FRIEDHELM LOH GROUP



SZ 4182.000 - Mounting bracket PS for VX, TS, VX SE

For variable attachment of punched rail 23 x 23 mm.



Features

Model No.	SZ 4182.000
Product description	For variable attachment of punched rail 23 x 23 mm.
Material	Die-cast zinc
Supply includes	1 set = 1 mounting bracket, 1 screw M6 x 12 mm, 1 cage nut M6
Installation options	Optionally flush with: Outer enclosure edge or enclosure clearance width On the vertical TS enclosure section via snap-on nuts TS 8800.808 or adaptor rails for VX compatibility, height-offset, via TS punched rail 25 x 38 mm On the vertical VX, VX SE enclosure section via adaptor rails for VX compatibility On the horizontal VX, TS enclosure section On the horizontal VX SE enclosure section, bottom On the horizontal VX SE enclosure section, top in the depth On enclosures and rails with rectangular system punching 12.5 x 11 mm
Note	U nuts (recommended: M6)
To fit enclosure type	VX TS VX SE
Packs of	24 pc(s).
Net weight	1,2 kg

Features

Gross weight	1,509 kg
Customs tariff number	73182900
ETIM 9	EC002625
ETIM 8	EC002625
ECLASS 8.0	27189234
Product description	SZ Mounting bracket, for fastening of PS mounting rail 23x23 mm, via adaptor rail for PS compatibility
