

Rittal – The System.

Faster – better – everywhere.



TS 4396.500

Support rail 75 x 20 mm

State: 11.9.2025 (Source: [rittal.com/si-sl](https://www.rittal.com/si-sl))

ENCLOSURES

POWER DISTRIBUTION

CLIMATE CONTROL

IT INFRASTRUCTURE

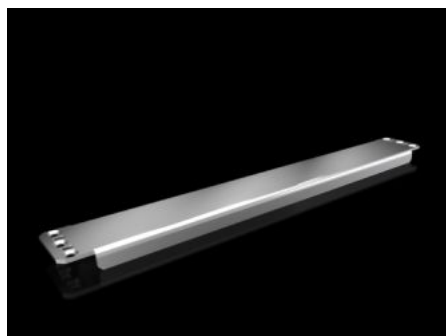
SOFTWARE & SERVICES

FRIEDHELM LOH GROUP



TS 4396.500 - Support rail 75 x 20 mm for VX, TS, VX SE

For heavy installed equipment such as base isolators or transformers.



Features

Model No.	TS 4396.500
Design	unslotted
Product description	For heavy installed equipment such as base isolators or transformers.
Material	Sheet steel
Surface finish	Zinc-plated
Supply includes	Assembly parts
Installation options	On the inner mounting level of the VX enclosure section On the vertical TS enclosure section via snap-on nuts TS 8800.808 or adaptor rails for VX compatibility, height-offset, via TS punched rail 25 x 38 mm On the horizontal TS enclosure section: in the width, in the depth On the VX SE enclosure section in the width (bottom and top) or in the depth (bottom and top) via snap-on nuts 8800.808.
To fit	Enclosure type: VX TS VX SE Width: = 600 mm Depth: = 600 mm
Packs of	4 pc(s).
Net weight	6.36

Features

Gross weight	7.16
PCF per pack (cradle-to-gate)	27.2 kg CO2 eq (Cat B)
Note on PCF category	Category B: PCF value (cradle-to-gate) based on the product weight, approximately calculated and self-declared
Customs tariff number	73269098
EAN	4028177522787
ETIM 9	EC001285
ETIM 8	EC001285
ECLASS 8.0	27189261