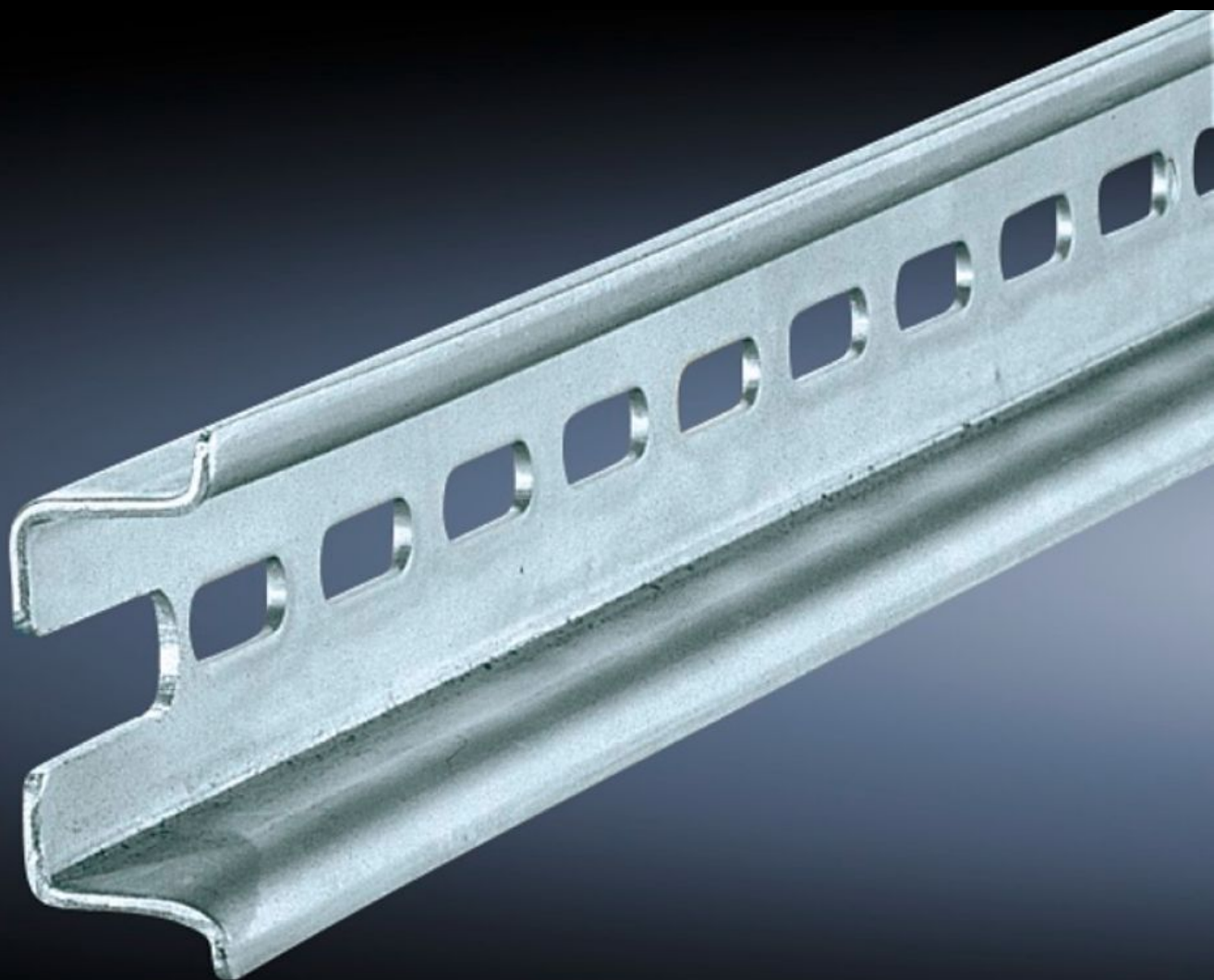


Rittal – The System.

Faster – better – everywhere.



SZ 4935.000

Support rail TH 35/15

State: 30.8.2025 (Source: [rittal.com/si-sl](https://www.rittal.com/si-sl))

ENCLOSURES

POWER DISTRIBUTION

CLIMATE CONTROL

IT INFRASTRUCTURE

SOFTWARE & SERVICES

FRIEDHELM LOH GROUP



SZ 4935.000 - Support rail TH 35/15 to EN 60 715 for VX, TS, VX SE

For snap-mounting terminals or other components with a snap-in system to EN 60 715.

Features

Model No.	SZ 4935.000
Product description	For snap-mounting terminals or other components with a snap-in system to EN 60 715.
Material	Sheet steel
Surface finish	Zinc-plated
Length support rail	755 mm
AX base/plinth installation options	In base/plinth width 800 mm
To fit	Enclosure type: VX TS Width: = 800 mm Depth: = 800 mm
To fit	Base/plinth system AX
Packs of	6 pc(s).
Net weight	2.64
Gross weight	2.882
PCF per pack (cradle-to-gate)	10.8 kg CO2 eq (Cat B)
Note on PCF category	Category B: PCF value (cradle-to-gate) based on the product weight, approximately calculated and self-declared
Customs tariff number	73269098
EAN	4028177114418
ETIM 9	EC001285
ETIM 8	EC001285
ECLASS 8.0	27400602