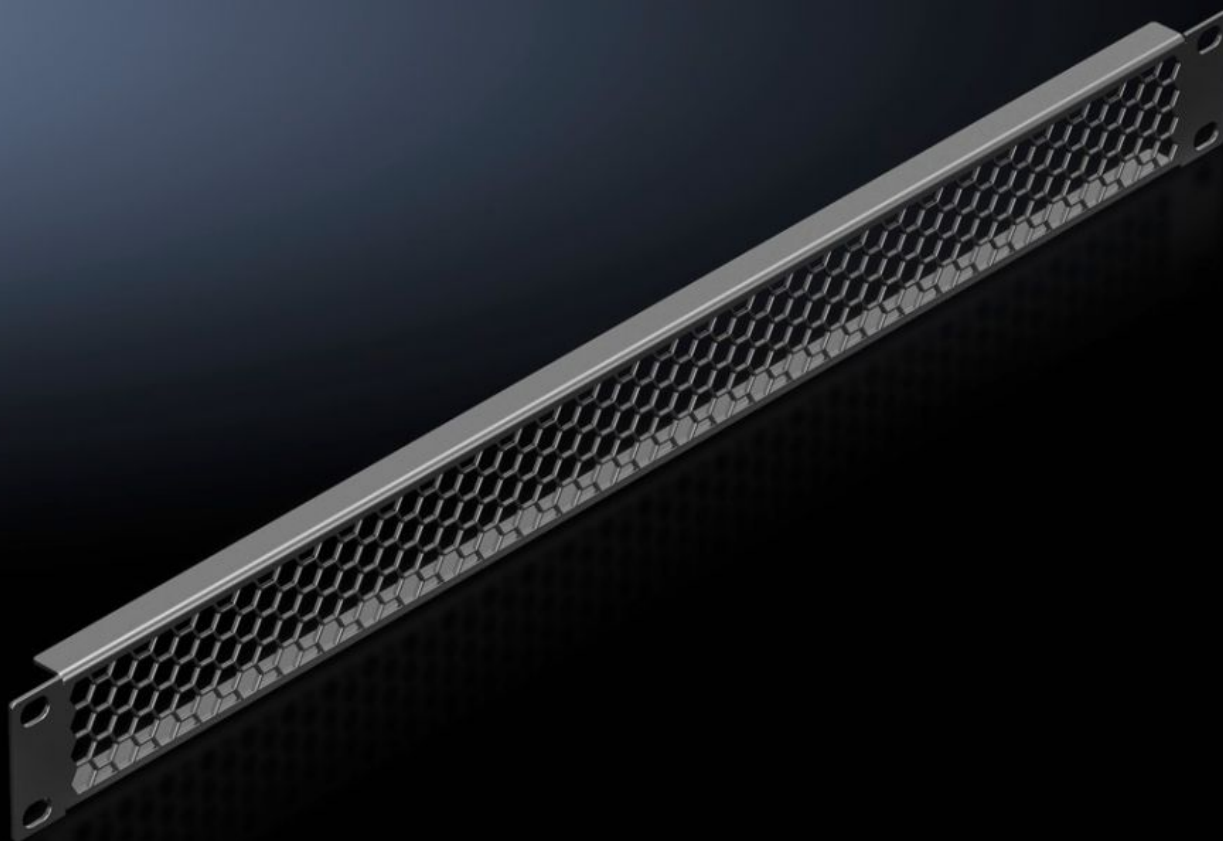


Rittal – The System.

Faster – better – everywhere.



IT 5302.201

Vent trim panel, 482.6 mm (19")

State: 2.8.2025 (Source: [rittal.com/si-sl](https://www.rittal.com/si-sl))

ENCLOSURES

POWER DISTRIBUTION

CLIMATE CONTROL

IT INFRASTRUCTURE

SOFTWARE & SERVICES

FRIEDHELM LOH GROUP



IT 5302.201 - Vent trim panel, 482.6 mm (19")

For venting enclosures and housings.

Features

Model No.	IT 5302.201
Product description	For targeted air infeed from the front zone into the 482.6 mm (19") level.
Benefits	Vented surface area approx. 85 % perforated
Applications	Targeted routing of cold air from the raised floor via the front to the rear for cooling separate components
Material	Sheet steel
Surface finish	Spray-finished
Colour	RAL 9005
Installation dimensions	Installation depth for components: 482.6 mm Installation width for components: 19"
Units	1 U
Packs of	1 pc(s).
Net weight	0.234
Gross weight	0.237
Customs tariff number	94039910
EAN	4028177952898
ETIM 9	EC000331
ECLASS 8.0	27189272