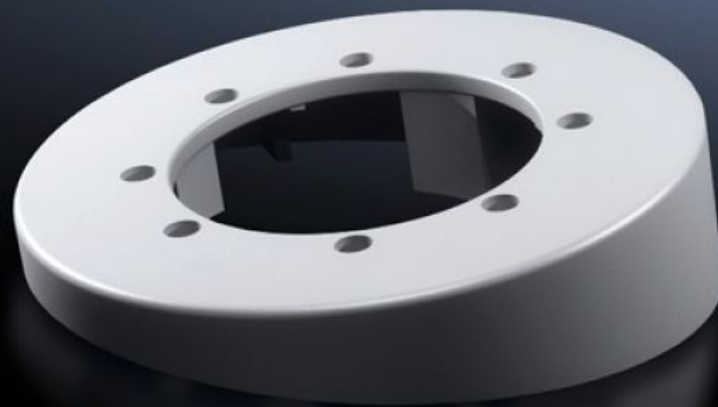


# Rittal – The System.

Faster – better – everywhere.



## CP 6206.400 Tilting adaptor 10°

State: 5.4.2026 (Source: [rittal.com/si-sl](https://www.rittal.com/si-sl))

ENCLOSURES

POWER DISTRIBUTION

CLIMATE CONTROL

IT INFRASTRUCTURE

SOFTWARE & SERVICES

FRIEDHELM LOH GROUP



# CP 6206.400 - Tilting adaptor 10° for support arm connection Ø 130 mm

For mounting between coupling, system 60/120 or attachment, system 60/120 or angle coupling, system 60/120, and the command panel.

## Features

Model No.	CP 6206.400
Design	For mounting between the command panel and Coupling CP 60/120/180 for support arm connection Ø 130 mm, 6206.300, 6212.300, 6218.300 Attachment CP 60/120 for support arm connection Ø 130 mm, 6206.320, 6212.320 Angle coupling 90°, system 60/120 for support arm connection Ø 130 mm, CP 6206.380, 6212.380
Product description	For mounting between coupling, system 60/120 or attachment, system 60/120 or angle coupling, system 60/120, and the command panel
Material	Die-cast zinc
Colour	RAL 7035
Supply includes	Seals Assembly parts
Rifid y/n	Yes
Packs of	1 pc(s).
Net weight	0,6 kg
Gross weight	0,617 kg
Customs tariff number	79070000
ETIM 9	EC000882
ECLASS 8.0	27400556
Product description	CP Tilting adaptor 10°, CP 60/120, for support arm connection Ø 130 mm

# Approvals

---

Explanations

Manufacturer's declaration