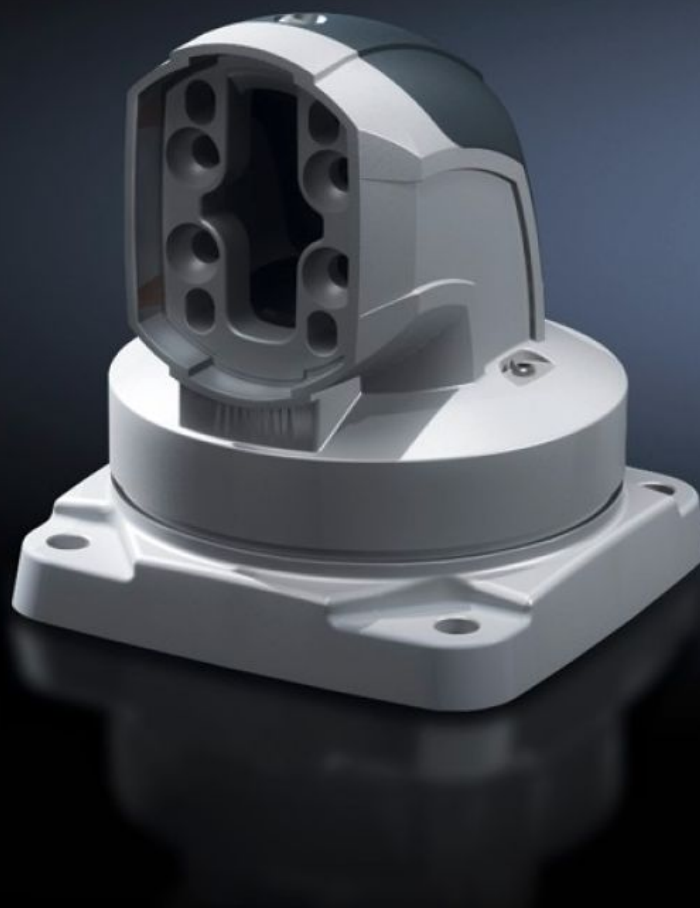


Rittal – The System.

Faster – better – everywhere.



CP 6206.700

Top-mounted joint CP 60

State: 8.2.2026 (Source: [rittal.com/si-sl](https://www.rittal.com/si-sl))

ENCLOSURES

POWER DISTRIBUTION

CLIMATE CONTROL

IT INFRASTRUCTURE

SOFTWARE & SERVICES

FRIEDHELM LOH GROUP



CP 6206.700 - Top-mounted joint CP 60 Horizontal outlet

For swivel mounting of the support arm system on horizontal surfaces – also suitable for suspending from the ceiling. Removable cover for simple cable entry.

Features

| | |
|----------------------------|---|
| Model No. | CP 6206.700 |
| Product description | For swivel mounting of the support arm system on horizontal surfaces – also suitable for suspending from the ceiling. Removable cover for simple cable entry. |
| Material | Cover: Plastic Top-mounted joint: Cast aluminium |
| Colour | Cover: RAL 7024 Top-mounted joint: RAL 7035 |
| Supply includes | Seals Screws for restricting rotation range Adjusting screws Self-tapping screws for support section attachment |
| Rotating/tilting | Yes |
| Rotation angle/swivel area | approx. 330°. The range of rotation can be limited by inserting the screws/limit plate provided. |
| Dimensions | Width: 146 mm Height: 158 mm |
| Packs of | 1 pc(s). |
| Net weight | 2.86 |
| Gross weight | 3.06 |
| Customs tariff number | 76169990 |
| EAN | 4028177684294 |
| ETIM 9 | EC000882 |
| ECLASS 8.0 | 27400556 |

Approvals

Explanations

Manufacturer's declaration