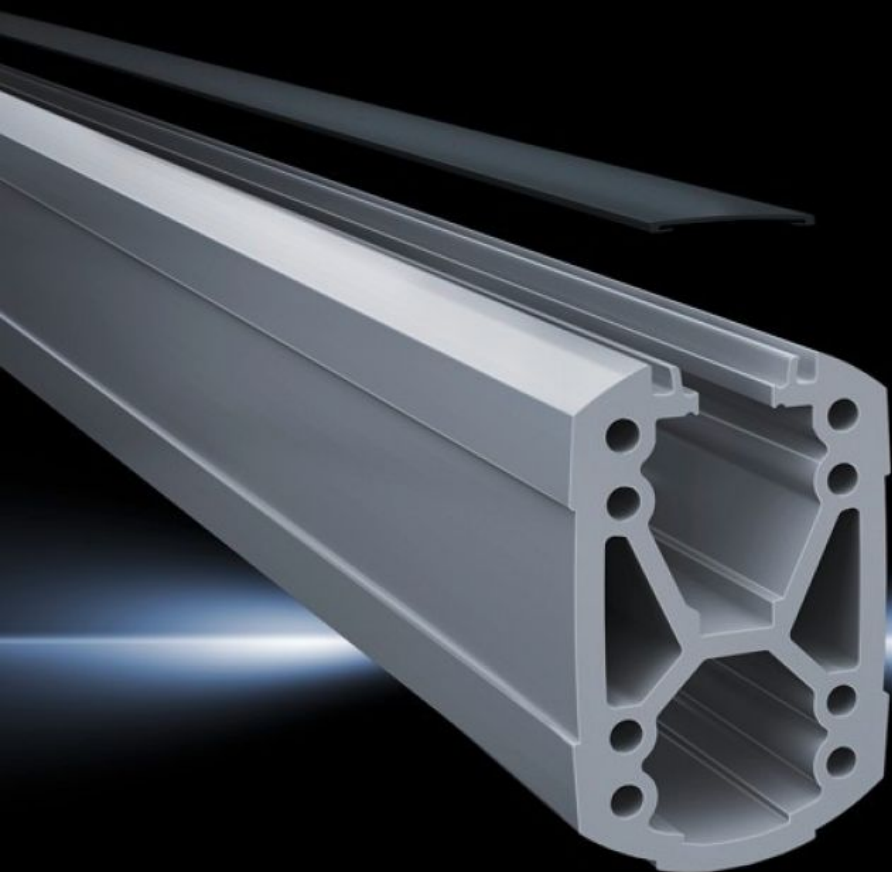
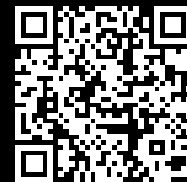


Rittal – The System.

Faster – better – everywhere.



CP 6212.210

Support section CP 120

State: 29.1.2026 (Source: [rittal.com/si-sl](https://www.rittal.com/si-sl))

ENCLOSURES

POWER DISTRIBUTION

CLIMATE CONTROL

IT INFRASTRUCTURE

SOFTWARE & SERVICES

FRIEDHELM LOH GROUP



CP 6212.210 - Support section CP 120 Open

Attachment to the connection components with 4 self-tapping screws in the screw channel. May be cut to any required length, no thread-tapping required. Open cable duct for easy servicing access and for pre-assembled cables with connectors, lockable via cover section. X-shaped profiling for greater load capacity, large cable routing channels. Upper channel adequate for cables with large connectors (e.g. DVI or VGA) and available/usable throughout the entire system.

Features

Model No.	CP 6212.210
Product description	Attachment to the connection components with 4 self-tapping screws in the screw channel. May be cut to any required length, no thread-tapping required. Open cable duct for easy servicing access and for pre-assembled cables with connectors, lockable via cover section. X-shaped profiling for greater load capacity, large cable routing channels. Upper channel adequate for cables with large connectors (e.g. DVI or VGA) and available/usable throughout the entire system.
Material	Support section: Extruded aluminium section Cover: Plastic
Colour	Support section: RAL 7035 Cover: RAL 7024
Supply includes	Support section Clip-in lid
Length	2.000 mm
Dimensions	Width: 75 mm Height: 120 mm Length: 2,000 mm
Packs of	1 pc(s).
Net weight	18.265
Gross weight	18.74
Customs tariff number	76042100

Features

EAN	4028177683983
ETIM 9	EC000882
ECLASS 8.0	27400556

Approvals

Explanations	Manufacturer's declaration
--------------	----------------------------